

SECOND AMENDED PLAT OF TRAILWOOD VILLAGE

DIVISION NO. 4

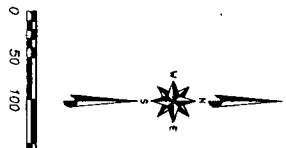
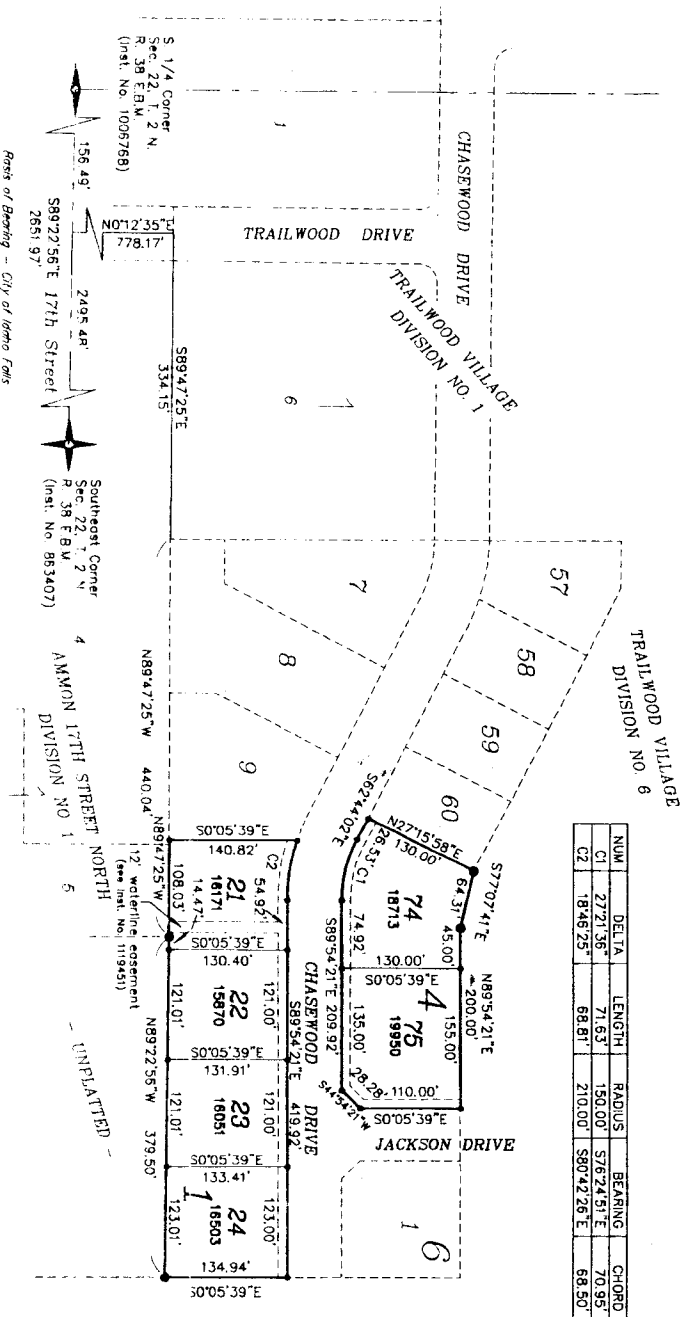
CITY OF AMMON, BONNEVILLE COUNTY, IDAHO

Being a replat of Lots 10 thru 14, Block 1, and Lots 61 thru 63, Block 4

PART OF THE SW 1/4 OF THE SE 1/4 OF SEC. 22, T. 2 N., R. 38 E.B.M.

First American Title Company
 Idaho Falls, Idaho 83404
 While this is a photographic
 reproduction of the recorded
 plat, the Company assumes no
 liability for variations,
 if any, with a resurvey.

NUM.	DELTA	LENGTH	RADIUS	BEARING	CHORD
C1	272.136°	71.63'	150.00'	S76°24'51"E	70.95'
C2	1848.25°	68.81'	210.00'	S80°42'28"E	68.50'



NOTES

- Indicates a 1/2" x 24" iron rod placed with a plastic sleeve cap marked L.S. 722.
- Indicates a 1/2" x 24" iron rod bearing with a plastic sleeve cap marked L.S. 723.
- Indicates a 3/8" x 30" iron rod placed with a plastic sleeve cap marked L.S. 724.
- Indicates a 3/8" x 30" iron rod placed with a plastic sleeve cap marked L.S. 725.
- Indicates a 3/8" x 30" iron rod placed with a plastic sleeve cap marked L.S. 726.
- Indicates a 3/8" x 30" iron rod placed with a plastic sleeve cap marked L.S. 727.
- Indicates a 3/8" x 30" iron rod placed with a plastic sleeve cap marked L.S. 728.
- Indicates a 3/8" x 30" iron rod placed with a plastic sleeve cap marked L.S. 729.
- Indicates a 3/8" x 30" iron rod placed with a plastic sleeve cap marked L.S. 730.
- Indicates a 3/8" x 30" iron rod placed with a plastic sleeve cap marked L.S. 731.
- Indicates a 3/8" x 30" iron rod placed with a plastic sleeve cap marked L.S. 732.
- Indicates a 3/8" x 30" iron rod placed with a plastic sleeve cap marked L.S. 733.
- Indicates a 3/8" x 30" iron rod placed with a plastic sleeve cap marked L.S. 734.
- Indicates a 3/8" x 30" iron rod placed with a plastic sleeve cap marked L.S. 735.
- Indicates a 3/8" x 30" iron rod placed with a plastic sleeve cap marked L.S. 736.
- Indicates a 3/8" x 30" iron rod placed with a plastic sleeve cap marked L.S. 737.
- Indicates a 3/8" x 30" iron rod placed with a plastic sleeve cap marked L.S. 738.
- Indicates a 3/8" x 30" iron rod placed with a plastic sleeve cap marked L.S. 739.
- Indicates a 3/8" x 30" iron rod placed with a plastic sleeve cap marked L.S. 740.
- Indicates a 3/8" x 30" iron rod placed with a plastic sleeve cap marked L.S. 741.
- Indicates a 3/8" x 30" iron rod placed with a plastic sleeve cap marked L.S. 742.
- Indicates a 3/8" x 30" iron rod placed with a plastic sleeve cap marked L.S. 743.
- Indicates a 3/8" x 30" iron rod placed with a plastic sleeve cap marked L.S. 744.
- Indicates a 3/8" x 30" iron rod placed with a plastic sleeve cap marked L.S. 745.
- Indicates a 3/8" x 30" iron rod placed with a plastic sleeve cap marked L.S. 746.
- Indicates a 3/8" x 30" iron rod placed with a plastic sleeve cap marked L.S. 747.
- Indicates a 3/8" x 30" iron rod placed with a plastic sleeve cap marked L.S. 748.
- Indicates a 3/8" x 30" iron rod placed with a plastic sleeve cap marked L.S. 749.
- Indicates a 3/8" x 30" iron rod placed with a plastic sleeve cap marked L.S. 750.

Plat of Bearing - City of Idaho Falls