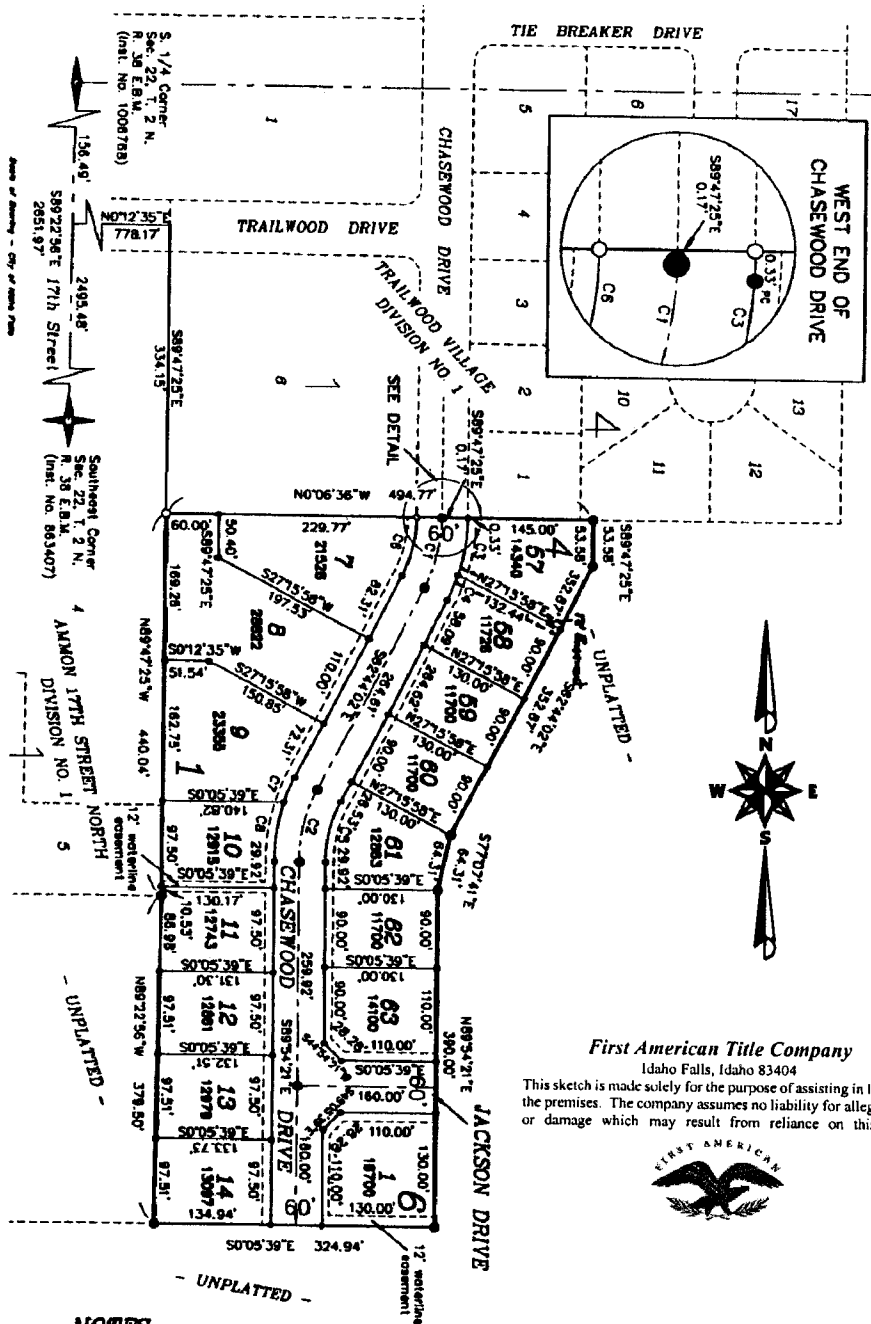


TRAILWOOD VILLAGE

DIVISION NO. 4

CITY OF AMMON, BONNEVILLE COUNTY, IDAHO

PART OF THE S.W. 1/4 OF SECTION 22, T. 2 N., R. 38 E.B.M.



First American Title Company

Idaho Falls, Idaho 83404

This sketch is made solely for the purpose of assisting in locating the premises. The company assumes no liability for alleged loss or damage which may result from reliance on this map



NOTES

- indicates a 1/2" x 24" iron rod placed into a yellow plastic cap marked I.S. 722.
- indicates a 1/2" x 24" iron rod found with a yellow plastic cap marked I.S. 722.
- indicates a 3/8" x 30" iron rod placed into a yellow plastic cap marked I.S. 722.
- indicates a 3/8" x 30" iron rod found with a yellow plastic cap marked I.S. 722.
- indicates lot area in square feet.
- indicates a 12" wide utility easement is reserved along the street side of all lots.

CUR	DELTA	LENGTH	RADIUS	BEARING	CHORD
C1	27°03'22"	85.00'	180.00'	N76°15'44"W	84.21'
C2	27°21'38"	85.95'	180.00'	S76°24'51"E	85.14'
C3	18°18'55"	87.13'	210.00'	N80°37'57"W	86.84'
C4	8°44'27"	32.04'	210.00'	N87°06'16"W	32.01'
C5	27°21'36"	71.83'	150.00'	S76°24'51"E	70.95'
C6	27°03'22"	70.83'	150.00'	N76°15'44"W	70.18'
C7	8°35'11"	31.47'	210.00'	S87°01'36"E	31.44'
C8	18°46'25"	68.81'	210.00'	S80°42'26"E	88.50'