

# TRAILWOOD VILLAGE

## DIVISION NO. 7

### CITY OF AMMON, BONNEVILLE COUNTY, IDAHO

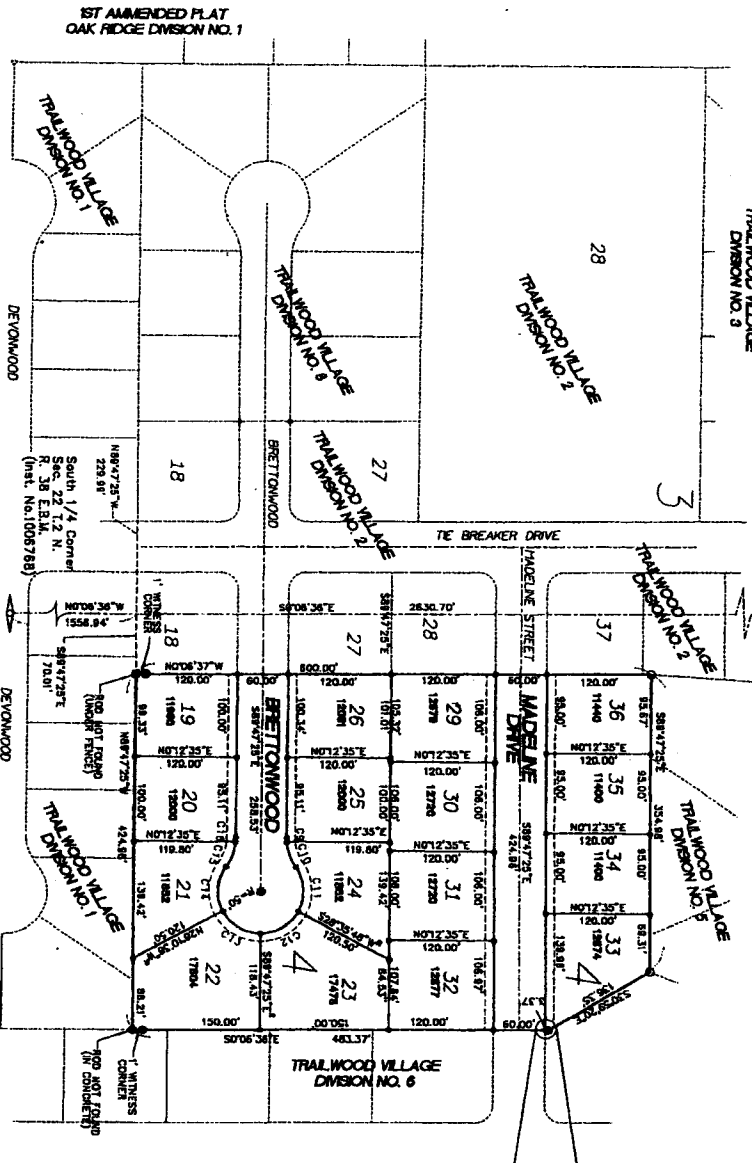
PART OF THE SE 1/4 OF SECTION 22, T. 2 N., R. 38 E.B.M.

First American Title Company  
 Idaho Falls, Idaho 83404  
 While this is a photographic  
 reproduction of the recorded  
 plat, the Company assumes no  
 liability for variations,  
 if any, with a re-survey.

West 1/4 Corner  
 Sec. 22 T. 2 N.  
 R. 38 E.B.M.  
 (Inst. No. 577470)

North 1/4 Corner  
 Sec. 22 T. 2 N.  
 R. 38 E.B.M.  
 (Inst. No. 764158)

East 1/4 Corner  
 Sec. 22 T. 2 N.  
 R. 38 E.B.M.  
 (Inst. No. 821879)



**CURVE TABLE**

| CH | DELTA   | ARC    | RADIUS | BEARING   | DISTANCE |
|----|---------|--------|--------|-----------|----------|
| C0 | 44.016° | 4.89°  | 60.00' | N87.523°E | 4.89'    |
| C1 | 50.750° | 51.88° | 60.00' | N07.632°E | 51.88'   |
| C2 | 53.290° | 53.47° | 60.00' | S88.117°W | 53.47'   |
| C3 | 61.528° | 53.17° | 50.00' | N83.058°E | 53.17'   |
| C4 | 61.981° | 53.17° | 50.00' | N83.058°E | 53.17'   |
| C5 | 52.741° | 53.47° | 60.00' | S88.117°W | 53.47'   |
| C6 | 44.016° | 4.89°  | 60.00' | N87.523°E | 4.89'    |

**NOTES**

- 1. All lots are 1/4 acre in area.
- 2. All lots are surveyed to the center of the road.
- 3. All lots are surveyed to the center of the road.
- 4. All lots are surveyed to the center of the road.
- 5. All lots are surveyed to the center of the road.
- 6. All lots are surveyed to the center of the road.
- 7. All lots are surveyed to the center of the road.
- 8. All lots are surveyed to the center of the road.
- 9. All lots are surveyed to the center of the road.
- 10. All lots are surveyed to the center of the road.

1ST AMENDED PLAT  
 OAK RIDGE DIVISION NO. 1

DEVONWOOD

DEVONWOOD

DEVONWOOD