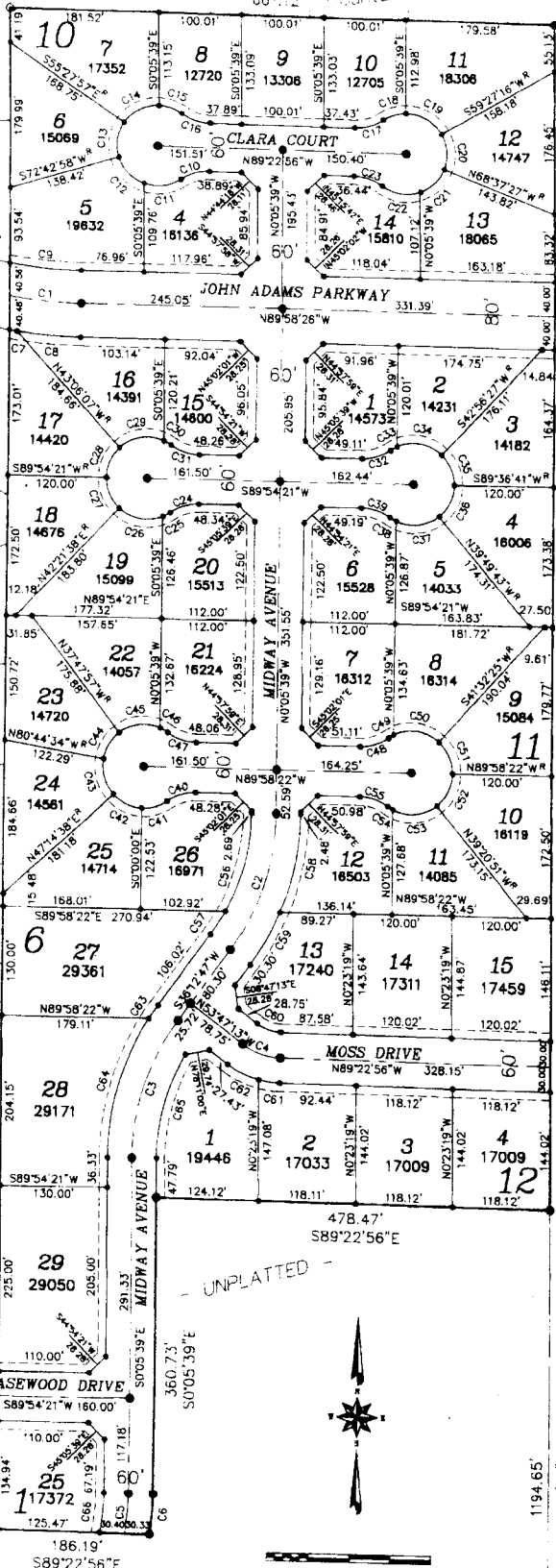


TRAILWOOD VILLAGE

DIVISION NO. 9

CITY OF AMMON, BONNEVILLE COUNTY, IDAHO
PART OF THE SOUTHEAST 1/4 OF SECTION 22, T. 2 N., R. 38 E.B.M.



NOTES

- indicates a 1/2" x 24" iron rod placed with a yellow plastic cap marked L.S. 722.
- indicates a 1/2" x 24" iron rod found with a yellow plastic cap marked L.S. 722.
- indicates a 3/8" x 30" iron rod placed with a yellow plastic cap marked L.S. 722.
- indicates a 3/8" x 30" iron rod found with a yellow plastic cap marked L.S. 722.
- indicates lot area in square feet.
- a 10' wide utility easement is reserved along the street side of all lots.
- Shows of Bearing - City of Idaho Falls

CURVE TABLE

NUM	DELTA	ARC	RADIUS	BEARING	DISTANCE
C1	9°02'43"	86.83'	550.00'	S85°27'04"E	86.74'
C2	36°18'26"	177.43'	280.00'	N18°03'34"E	174.48'
C3	36°18'27"	177.43'	280.00'	S18°03'34"W	174.48'
C4	35°35'43"	49.70'	80.00'	S71°35'04"E	48.91'
C5	9°32'03"	49.92'	300.00'	N4°40'22"E	49.86'
C6	8°43'36"	50.26'	330.00'	N4°46'09"E	50.21'
C7	0°58'29"	10.04'	590.00'	S82°02'32"E	10.04'
C8	7°26'36"	76.65'	590.00'	S86°15'04"E	76.59'
C9	9°46'16"	86.97'	510.00'	S85°05'18"E	86.87'
C10	35°05'37"	36.75'	50.00'	S73°04'04"W	36.18'
C11	53°39'13"	48.82'	50.00'	N82°20'52"E	45.13'
C12	53°32'29"	46.72'	50.00'	S44°03'17"E	45.04'
C13	51°48'06"	45.22'	50.00'	S83°37'30"W	43.69'
C14	57°05'27"	49.82'	50.00'	S83°04'47"W	47.79'
C15	34°05'23"	29.75'	50.00'	N71°19'49"W	29.31'
C16	35°05'33"	36.75'	60.00'	S71°19'49"E	36.18'
C17	35°10'40"	36.84'	60.00'	N73°06'35"E	36.26'
C18	33°56'36"	29.62'	50.00'	S72°29'35"W	29.19'
C19	59°58'23"	52.35'	50.00'	N60°32'25"W	49.99'
C20	51°55'17"	45.31'	50.00'	N43°55'05"W	43.78'
C21	47°54'06"	41.80'	50.00'	N45°19'36"E	40.60'
C22	56°28'13"	49.25'	50.00'	S82°30'14"E	47.28'
C23	35°10'40"	36.84'	60.00'	N71°52'27"W	36.26'
C24	35°00'58"	36.67'	60.00'	S72°19'01"W	36.10'
C25	12°08'32"	10.60'	50.00'	N65°52'01"E	10.58'
C26	65°24'33"	57.08'	50.00'	S80°20'39"E	54.03'
C27	47°32'43"	41.49'	50.00'	S23°32'34"E	40.31'
C28	46°59'32"	41.01'	50.00'	S23°24'07"W	39.87'
C29	65°57'44"	57.56'	50.00'	S79°52'45"W	54.44'
C30	12°08'32"	10.60'	50.00'	N61°04'07"W	10.58'
C31	35°05'27"	36.75'	60.00'	S72°32'34"E	36.18'
C32	35°10'40"	36.84'	60.00'	N72°23'52"E	36.26'
C33	10°58'07"	9.57'	50.00'	S60°17'36"W	9.56'
C34	87°09'47"	58.61'	50.00'	N80°38'27"W	55.31'
C35	48°40'14"	40.73'	50.00'	N23°43'26"W	39.61'
C36	50°33'37"	44.12'	50.00'	N24°53'29"E	42.70'
C37	83°51'45"	55.73'	50.00'	N82°08'10"E	52.89'
C38	10°58'07"	9.57'	50.00'	S80°28'54"E	9.56'
C39	35°05'46"	36.75'	60.00'	N72°32'45"W	36.18'
C40	35°10'40"	36.84'	60.00'	S72°31'09"W	36.26'
C41	37°01'33"	32.31'	50.00'	N73°26'28"E	31.75'
C42	45°17'35"	36.33'	50.00'	S65°24'10"E	38.50'
C43	52°00'48"	45.30'	50.00'	S16°44'58"E	43.85'
C44	42°58'37"	37.48'	50.00'	S30°43'44"W	36.60'
C45	60°39'35"	52.94'	50.00'	S82°31'50"W	50.50'
C46	12°15'49"	10.70'	50.00'	N61°00'28"W	10.68'
C47	35°10'38"	36.84'	60.00'	S72°27'52"E	36.26'
C48	35°05'28"	36.75'	60.00'	N72°28'33"E	36.18'
C49	8°33'16"	7.47'	50.00'	S68°12'27"W	7.45'
C50	68°03'19"	59.39'	50.00'	N82°29'15"W	55.98'
C51	48°29'13"	42.31'	50.00'	N24°12'55"W	41.06'
C52	50°37'31"	44.18'	50.00'	N25°20'23"E	42.78'
C53	65°40'28"	57.31'	50.00'	N83°29'23"E	54.23'
C54	8°47'50"	7.68'	50.00'	S59°16'28"E	7.67'
C55	35°00'57"	36.67'	60.00'	N72°23'02"W	36.10'
C56	28°37'45"	124.92'	250.00'	N14°13'13"E	123.62'
C57	7°40'41"	33.50'	250.00'	N32°22'27"E	33.48'
C58	22°45'32"	123.14'	310.00'	N11°17'07"E	122.33'
C59	1°32'54"	73.30'	310.00'	N29°26'20"E	73.13'
C60	35°35'43"	31.06'	50.00'	S71°35'04"E	30.57'
C61	1°31'48"	25.98'	110.00'	S82°37'02"E	25.92'
C62	22°03'55"	42.36'	110.00'	S64°49'10"E	42.10'
C63	3°36'59"	19.57'	310.00'	S34°24'18"W	19.56'
C64	32°41'27"	176.87'	310.00'	S16°15'05"W	174.49'
C65	30°14'51"	131.98'	250.00'	S15°01'46"W	130.45'
C66	10°31'25"	49.59'	270.00'	N5°10'03"E	49.52'

Trailwood Village Division No. 6
Second Amended Plat of Trailwood Village Division No. 4

14,355.05'
N0°23'19"W

UNPLATTED

S1/4 COR. SEC. 22
FOUND BRASS CAP
T. 2N. R. 38E. BM
CP&F #1006768

17th STREET

1988.98' 662.99'

N89°22'56"W 2851.97'

SE COR. SEC. 22
FOUND BRASS CAP
T. 2N. R. 38E. BM
CP&F #863407

