

TRELLIS SQUARE

DIVISION NO. 1

AN ADDITION TO THE CITY OF AMMON, BONNEVILLE COUNTY, IDAHO

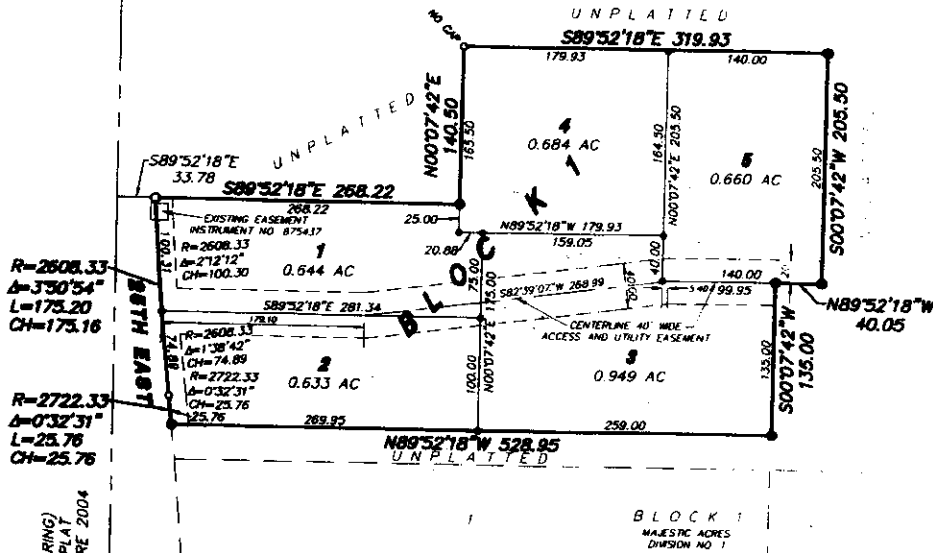
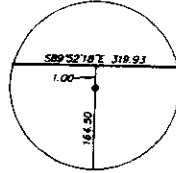
BING PART OF THE N.W. 1/4 OF SECTION 15, T.2N. R.38E. B.M.



FOUND ALUMINUM CAP
N.W. COR. SECTION 15
T.2N. R.38E. B.M.
CP&F BY L.S. 8795
INSTR. No. 1100942

First American Title Company
Idaho Falls, Id 83404

While this is a photographic
reproduction of the recorded
plat, the company assumes
no liability for variations,
if any, with a re-survey.



R=2608.33
Δ=3°50'54"
L=173.20
CH=173.16

R=2722.33
Δ=0°32'31"
L=25.76
CH=25.76

SECTION LINE (BASIS OF BEARING)
25TH EAST RIGHT-OF-WAY PLAT
CITY OF IDAHO FALLS DATUM-PRE 2004
S00°06'55"E 2665.98

LEGEND & NOTES

- 5/8" x 30" Steel rebar set with plastic cap stamped L.S.8795
- 1/2" x 24" Steel rebar set with plastic cap stamped L.S.8795
- 5/8" Steel rebar found with caps stamped L.S.8795 unless noted otherwise
- 1/2" Steel rebar found with caps stamped L.S.8795 unless noted otherwise

--- A fifteen foot wide Public Utility Easement is hereby granted/reserved along all road frontages within each lot. All other public utility easements are noted otherwise.

This division contains 5 lots. (0.71 acre average lot size.)

Utilities shall have the right to install, maintain, and operate their equipment above and below ground and all other related facilities within the Public Utility Easements (PUE) identified on this plat map as may be necessary or desirable in providing utility services within and without the lots identified herein, including the right of access to such facilities and the right to require removal of any obstructions including structures, trees and vegetation that may be placed within the PUE. The utility may require the lot owner to remove all structures within the PUE at the lot owner's expense, or the utility may remove such structures at the lot owner's expense. At no time may any permanent structures be placed within the PUE or any other obstruction which interferes with the use of the PUE without the prior written approval of the utilities with facilities in the PUE.

FOUND ALUMINUM CAP
W 1/4 COR. SECTION 15
T.2N. R.38E. B.M.
CP&F BY L.S. 8795
INSTR. No. 1100941