

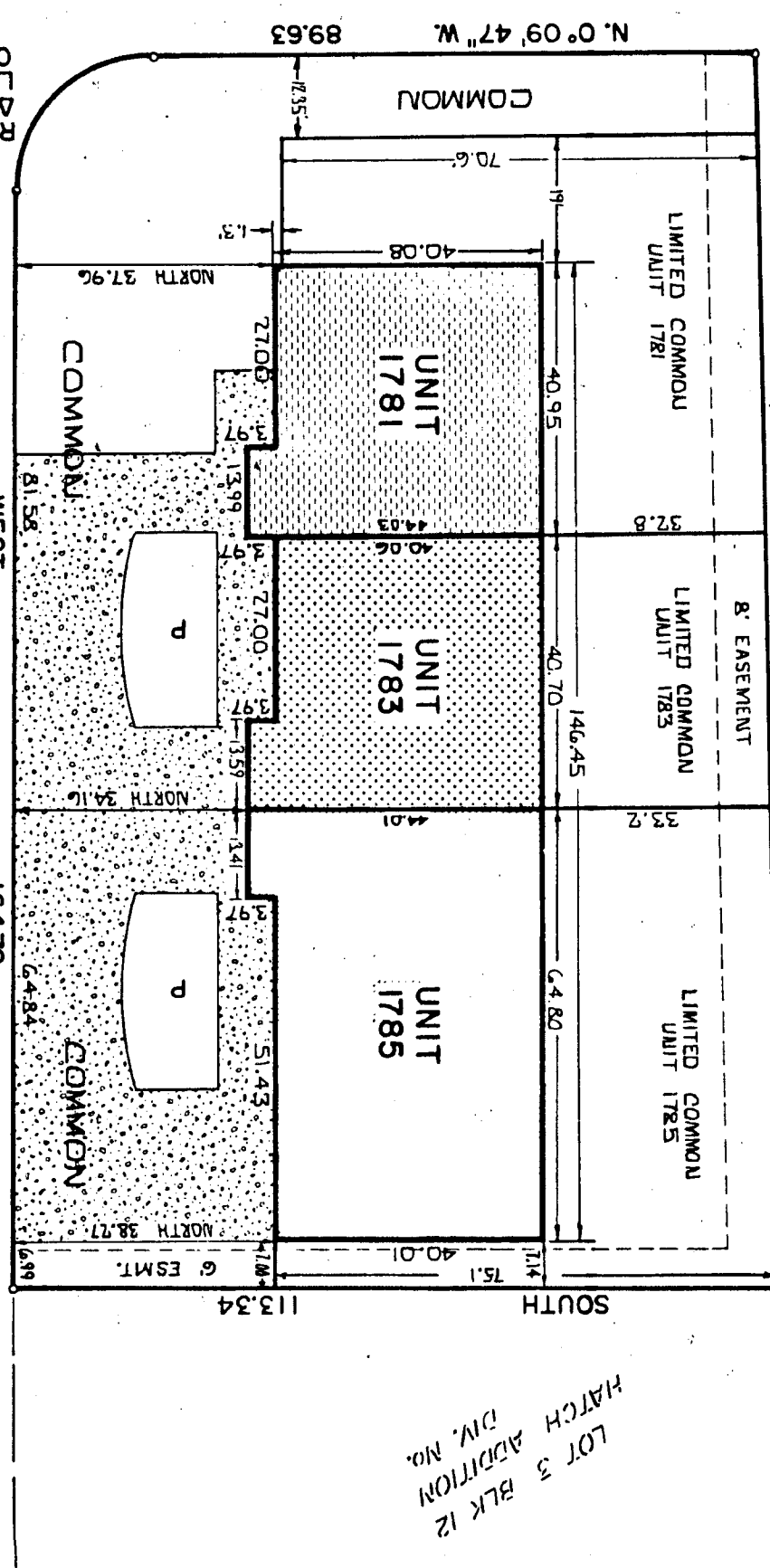
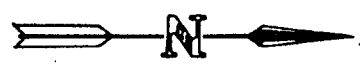
This sketch is made solely for the purpose of assisting in locating the premises. The company assumes no liability for alleged loss or damage which may result from reliance on this map.



FIRST AMENDED PLAT OF TRB I GONDOL A GONDOL INJUM PRDJG CITY OF IDAHO FALLS, BONNEVILLE COUNTY, IDAHO

LEGEND

DESIGNATES	IRON RODS	TOTAL AREA	COMMON AREA	LIMITED COMMON AREA	PRIVATE OWNERSHIP	EXTERIOR WALLS OF BLDG.	L.F.
PLANTERS		206.36	78.56	6.75	UNIT 1781	UNIT 1781	300.84
PAVEMENT		78.56	55.55	7.6	UNIT 1783	UNIT 1783	129.96
UTILITY EASEMENTS		6.75	7.6	2.63	UNIT 1785	UNIT 1785	85.96
		2742.14	1373.03	1373.03			173.62
		50. FT. 41%	50. FT. 20%	50. FT. 41%			L.F. = 45%
		185.35					



C.L.D.R. = 2028
C = 31.80
C = 28.64
C = 89.59
C = 13

LOT 3 BLK 12
HATCH ADDITION
DIV. NO.

A REPLAT OF LOTS 1 AND 2
BLOCK 12 OF THE HATCH ADDITION
DIVISION No. 6