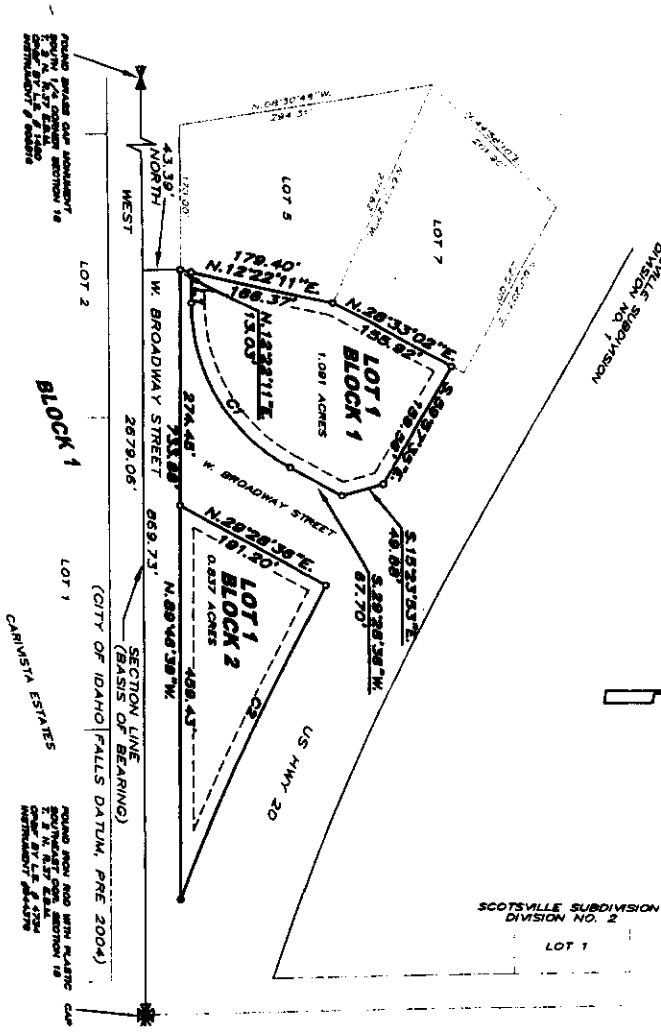


TWIN PINES PARK DIVISION NO. 1

A REPLAT OF LOT 6, BLOCK 1, SCOTSVILLE SUBDIVISION, DIVISION NO. 3
SECTION 18, TOWNSHIP 2 NORTH, RANGE 37
EAST OF THE BOISE MERIDIAN, BONNEVILLE COUNTY, IDAHO

First American Title Company
Idaho Falls, ID 83404
While this is a photographic
reproduction of the recorded
plat, the company assumes
no liability for variations,
if any, with a re-survey.



- LEGEND**
- FOUND IRON ROD/CAP
 - 5/8" x 30" Steel Re-Bar WITH PLASTIC CAP
 - STAMPED P.L.S.# 10944
 - 15' UTILITY EASEMENT

LINE TABLE

LINE	LENGTH	BEARING
L1	34.17'	N.89°46'38"W

CURVE TABLE

CURVE	R	Δ	C	L	CHORD BEARING
C1	221.68'	60°46'18"W	854.44'	528.31'	S.89°31'25"W
C2	252.74'	78°04'51"	402.22'	402.82'	S.80°18'28"E

NOTES

All buildings shall be set back a minimum of 30 feet from all road right-of-way lines.

A 15 foot wide public utility easement is hereby reserved within each lot along all road frontages. The right to use said easements is hereby perpetually reserved for public utilities or for any other uses as designated on the plat.