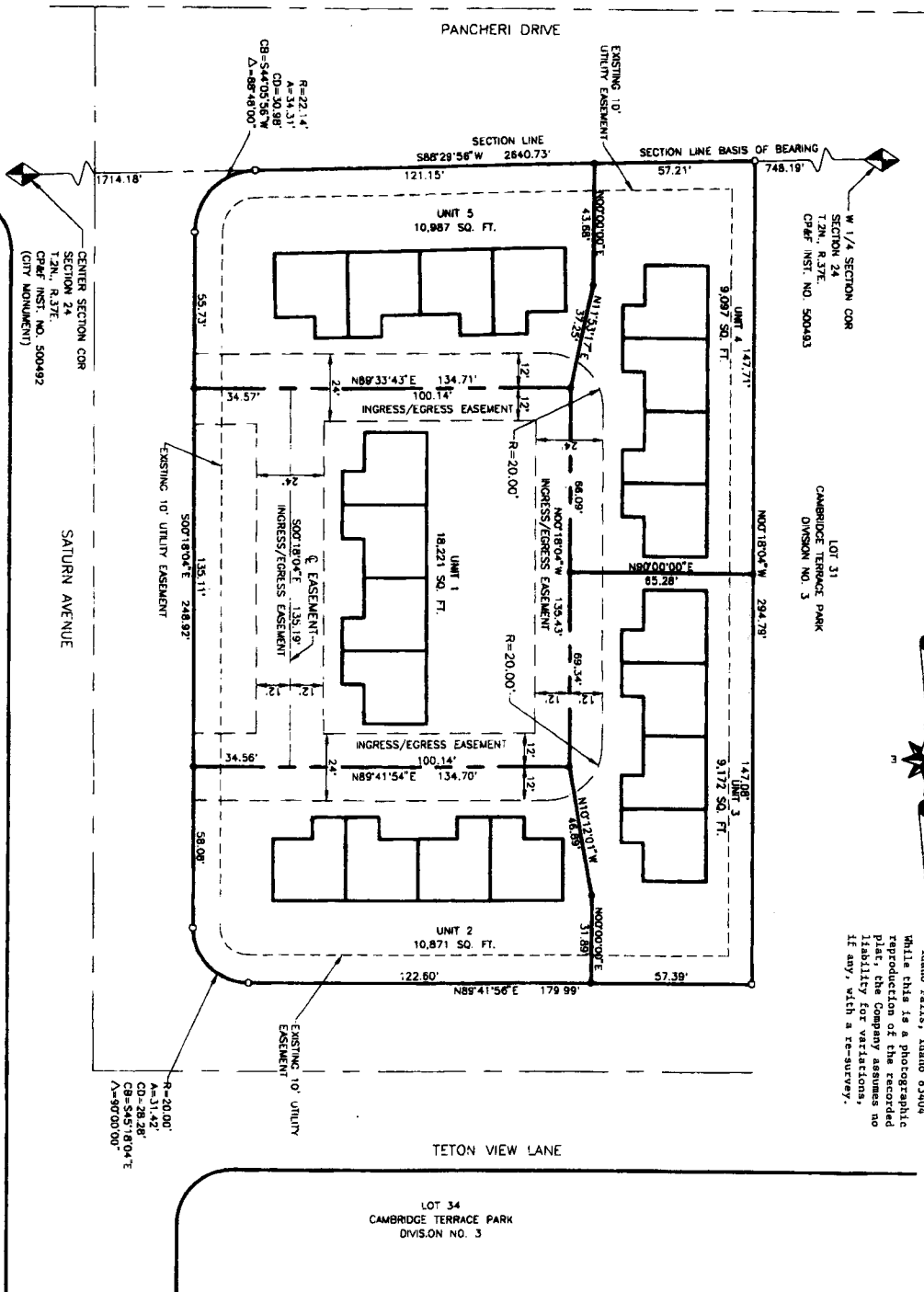


TWO TOP VILLAGE

PURSUANT TO IDAHO CODE, TITLE 55, CHAPTER 15
 LOCATED IN LOT 32, BLOCK 7, CAMBRIDGE TERRACE PARK ADDITION
 DIVISION NO. 3, CITY OF IDAHO FALLS, BONNEVILLE COUNTY, IDAHO



First American Title Company
 Idaho Falls, Idaho 83404
 While this is a photographic reproduction of the recorded plat, the company assumes no liability for variations, if any, with a re-survey.



UTILITY DEDICATION

Two Top, LLC, owner of the parcel of land which is shown upon the plat of Two Top Village consents to the preparation and recording of this plat and hereby offers and conveys to all public utility agencies and their successors and assigns all right-of-way as shown by the areas marked "utility easement" on the plat for the construction and maintenance of all utility lines, including gas, water, sewer and other utility lines and appurtenances, together with the right of access thereto.

NOTE

1. Easement easement for utilities.
2. No private access offered onto Pancheri Drive.
3. Each unit consists of the entire property enclosed by the Unit boundary lines including the land and all improvements thereon, but subject to the covenants, conditions, and restrictions and easements set forth in the Declaration of Covenants, Conditions and Restrictions of Two Top Village.

LEGEND

- SET 5/8" X 3/4" PIN WITH A YELLOW CAP MARKED U.S. 3389
- SET 1/2" X 3/4" PIN WITH A YELLOW CAP MARKED U.S. 3389
- 10' UTILITY EASEMENT
- BUILDING FOOTPRINT