

FOUND BRASS CAP
 T.M. COR. SECTION 7
 C.P. OF T.B. E. 923
 INSTR. NO. 500801

SECTION LINE (BASIS OF BEARING)
 CITY OF IDAHO FALLS DATUM 2004
 N00°05'50"E 2637.71'
 417.50' 2220.21'

UNIVERSITY PLACE TOWNHOMES

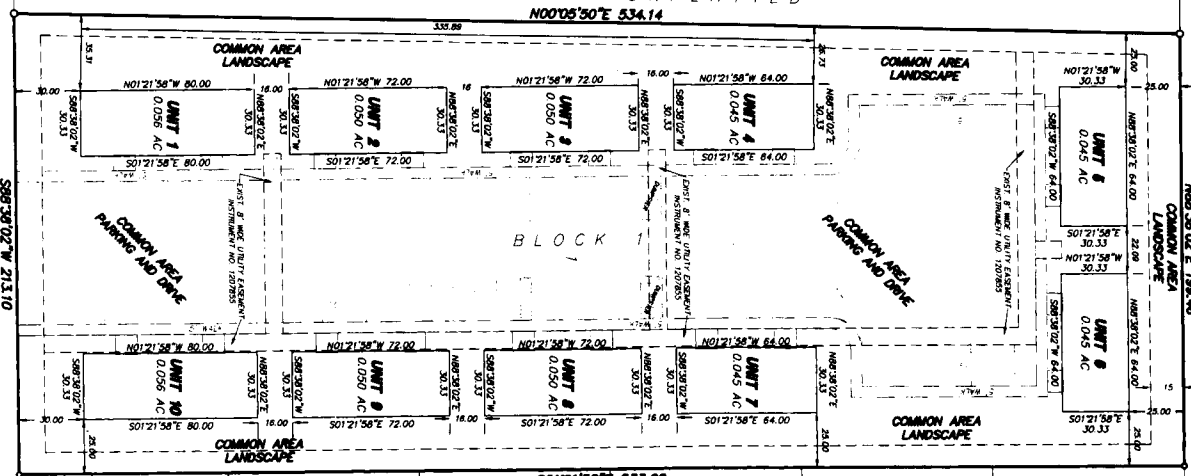
PURSUANT TO DAHO CODE, TITLE 66, CHAPTER 16
 CITY OF IDAHO FALLS, BONNEVILLE COUNTY, DAHO
 LYNG N LOT 1, BLOCK 1, DAGGETT HEIGHTS, DIVISION NO. 1

ENERGY PLAZA
 BLOCK 1

UNPLATTED
 N00°05'50"E 534.14'

BLOCK 1

S01°21'58"E 533.00'
 BLOCK 1
 DAGGETT HEIGHTS
 DIVISION NO. 1



ENERGY DRIVE

LEGEND & NOTES

- 5/8" Steel Rebar (used with plastic caps stamped L.S.2785)
 - 1/2" Steel Rebar (used with plastic caps stamped L.S.2785)
- A 1/2" rebar used with Plastic Caps stamped L.S.2785 is hereby reserved along all road frontages within each lot. All other public utility easements are in full width unless noted otherwise.
- Parking, walkways, and landscaped areas are common areas.
- Each unit consists of the entire property indicated by the lot boundary lines including the land and all improvements thereon but subject to the easements, conditions, and restrictions, and encumbrances of record in the description of the respective Condominium and Restrictions of University Place Townhomes.
- Building corners and unit corners occupy the same geographical location, no monument set.
- For District 7 Health Department approval see Daggett Heights, Division No. 1, plat recorded April 19, 2005 under instrument No. 1182880.
- The project consists of 10 units and a common area and driveway for 87 parking stalls.

First American Title Company
 Idaho Falls, Id 83404
 While this is a photographic reproduction of the recorded plat, the company assumes no liability for variations, if any, with a re-survey.