

UTAH AVENUE INDUSTRIAL PARK

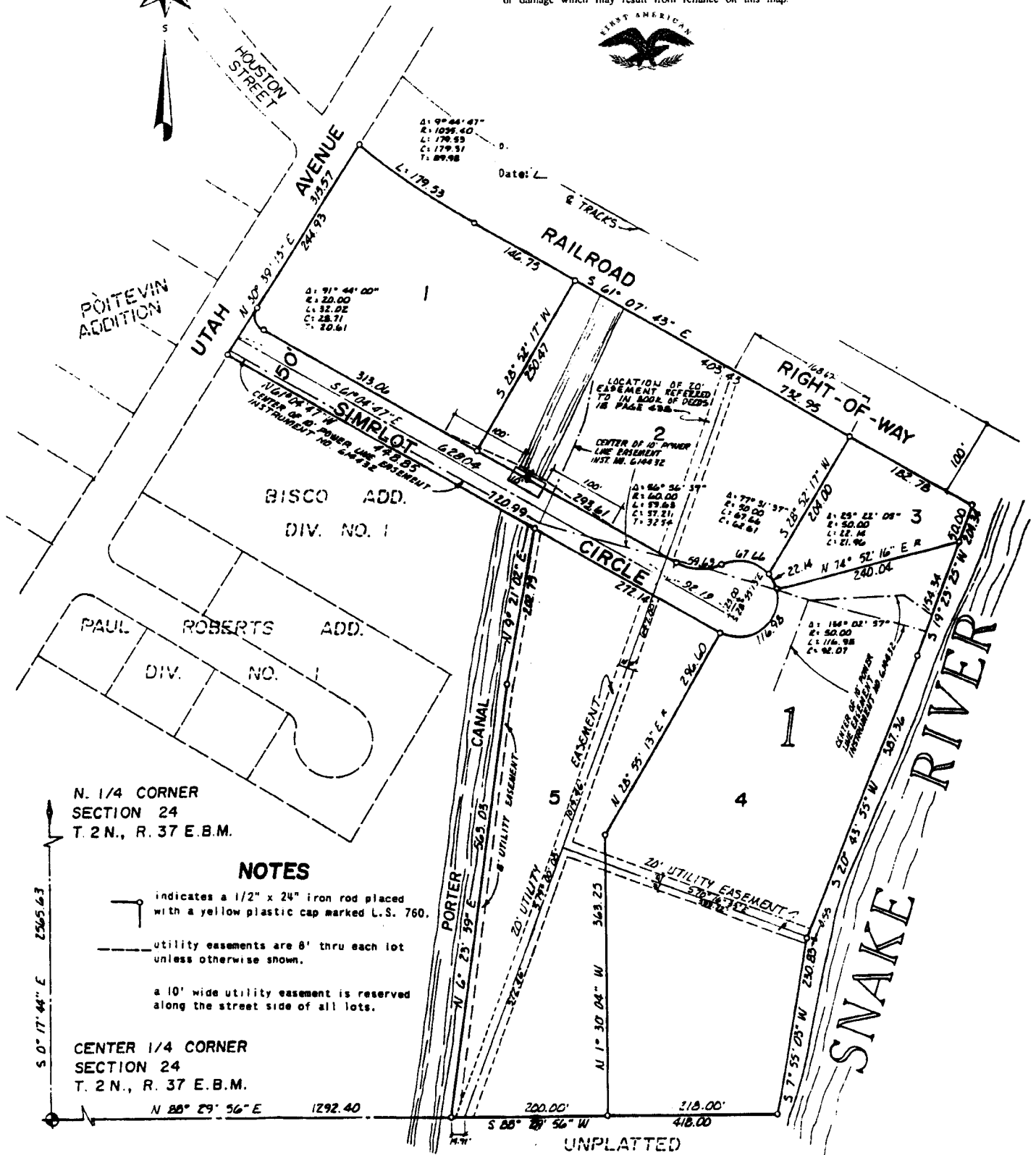
IN THE CITY OF IDAHO FALLS, IDAHO
PART OF THE N.E. 1/4, OF SECTION 24, T. 2 N., R. 37 E.B.M.



First American Title Company

Idaho Falls, Idaho 83404

This sketch is made solely for the purpose of assisting in locating the premises. The company assumes no liability for alleged loss or damage which may result from reliance on this map.



N. 1/4 CORNER
SECTION 24
T. 2 N., R. 37 E.B.M.

NOTES

- indicates a 1/2" x 24" iron rod placed with a yellow plastic cap marked L.S. 760.
- utility easements are 8' thru each lot unless otherwise shown.
- a 10' wide utility easement is reserved along the street side of all lots.

CENTER 1/4 CORNER
SECTION 24
T. 2 N., R. 37 E.B.M.

S. 0° 17' 44" E 2505.63

N 85° 29' 56" E 1292.40

UNPLATTED