

VALLEY VIEW HEIGHTS

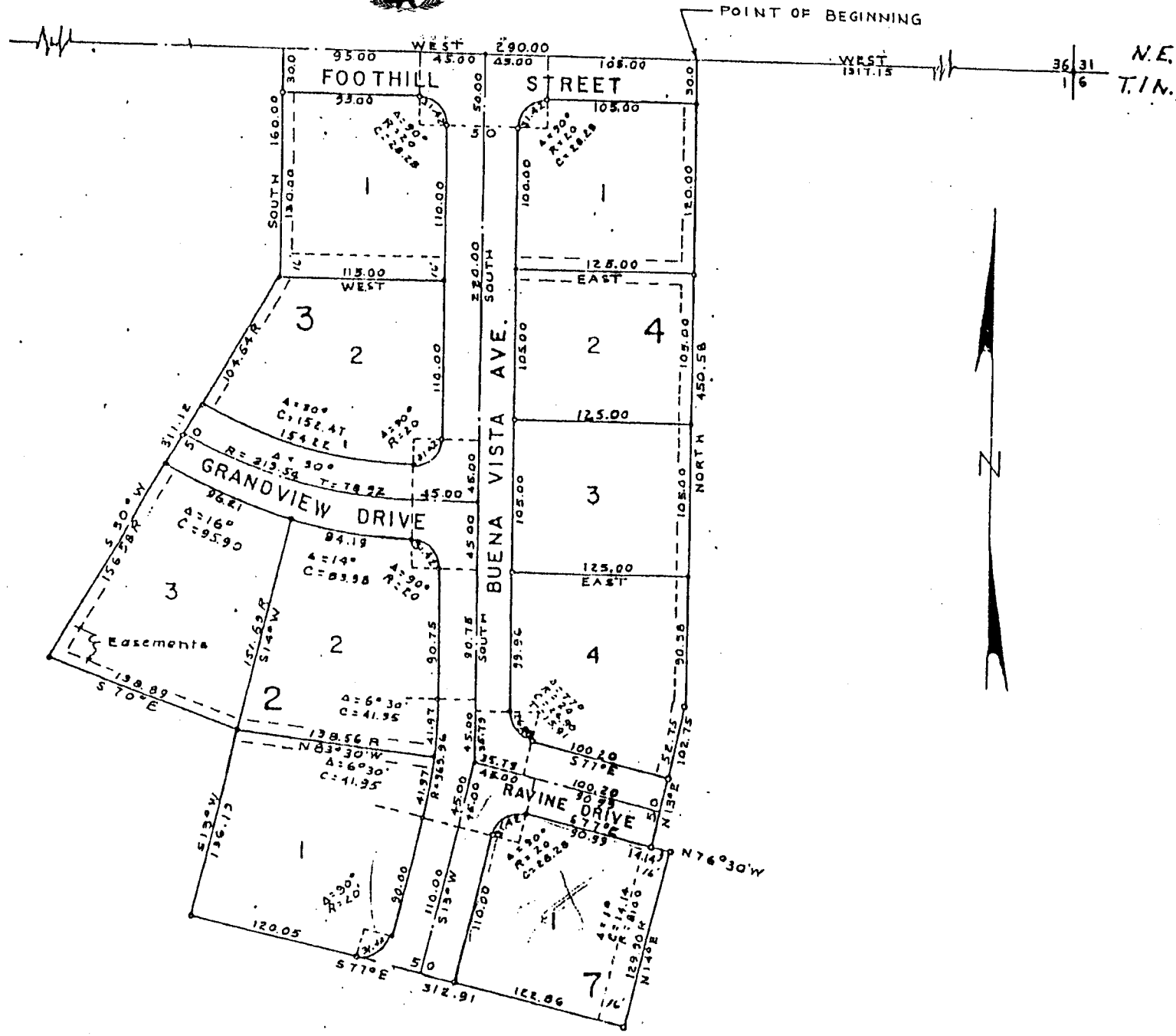
DIVISION NO. 1
 BONNEVILLE COUNTY, IDAHO

PART OF
 NE 1/4 SEC. 1, T. 1 N., R. 38 E. B.B. & M.

OCTOBER 1959

First American Title Company
 Idaho Falls, Idaho 83404

This sketch is made solely for the purpose of assisting in locating the premises. The company assumes no liability for alleged loss or damage which may result from reliance on this map.



Utility Easements are 8' through each lot.