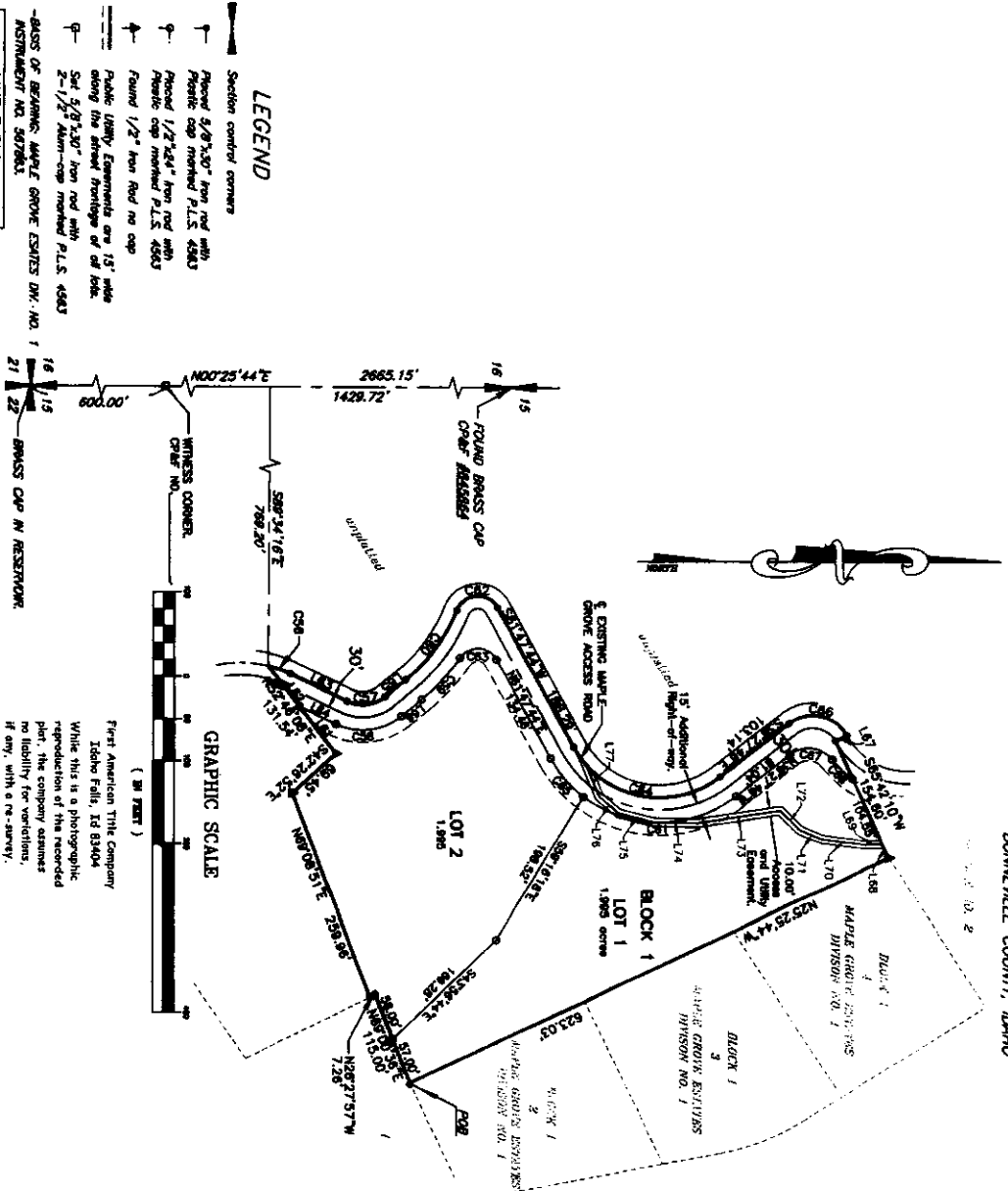


VENTANA PALISADES

DIVISION NO. 1

PART OF THE SOUTHWEST 1/4 OF SECTION 15, T 1 S, R. 45 E, B.M.
BONNEVILLE COUNTY, IDAHO



LEGEND

- Section control corners
 - Placed 5/8"x30" iron rod with plastic cap marked P.L.S. 4583
 - Placed 1/2"x24" iron rod with plastic cap marked P.L.S. 4583
 - Found 1/2" iron rod no cap
 - Plastic limby. Easements are 15' wide along the street frontage or of 150'
 - Set 5/8"x30" iron rod with 2-1/2" aluminum marked P.L.S. 4583
- BASIS OF BEARING: MAPLE GROVE ESTATES DIV. NO. 1
— INSTRUMENT NO. 507961.

LINE TABLE

LINE	LENGTH	BEARING
L41	71.22	N67°48'00\"
L42	60.41	N67°48'00\"
L43	74.50	S89°00'00\"
L44	47.82	S89°00'00\"
L45	31.22	S89°00'00\"
L46	31.00	S89°00'00\"
L47	14.00	S89°00'00\"
L48	18.47	S89°00'00\"
L49	22.80	S89°00'00\"
L50	46.70	S89°00'00\"
L51	71.22	S89°00'00\"
L52	88.85	S89°00'00\"
L53	81.25	S89°00'00\"
L54	42.54	S89°00'00\"
L55	28.50	S89°00'00\"
L56	28.50	S89°00'00\"
L57	41.84	S89°00'00\"

CURVE TABLE

CURVE	LENGTH	NAME	CHORD BEARING	CHORD LENGTH	DELTA
C1	71.22	17.8	S89°00'00\"	71.22	173°43'
C2	46.15	34.0	S89°00'00\"	39.81	67°24'
C3	60.41	34.0	S89°00'00\"	52.42	67°24'
C4	74.50	34.0	S89°00'00\"	64.03	67°24'
C5	47.82	34.0	S89°00'00\"	42.42	67°24'
C6	31.22	34.0	S89°00'00\"	27.03	67°24'
C7	31.00	34.0	S89°00'00\"	26.72	67°24'
C8	14.00	34.0	S89°00'00\"	12.32	67°24'
C9	18.47	34.0	S89°00'00\"	16.22	67°24'
C10	22.80	34.0	S89°00'00\"	20.12	67°24'
C11	46.70	34.0	S89°00'00\"	40.02	67°24'
C12	71.22	34.0	S89°00'00\"	63.92	67°24'
C13	88.85	34.0	S89°00'00\"	81.82	67°24'
C14	81.25	34.0	S89°00'00\"	74.72	67°24'
C15	42.54	34.0	S89°00'00\"	37.62	67°24'
C16	28.50	34.0	S89°00'00\"	24.52	67°24'
C17	28.50	34.0	S89°00'00\"	24.52	67°24'
C18	41.84	34.0	S89°00'00\"	36.42	67°24'

GRAPHIC SCALE

(IN FEET)

First American Title Company
 Idaho Falls, ID 83404
 While this is a photographic
 reproduction of the recorded
 plat, the company assumes
 no liability for variations,
 if any, with a re-survey.