

THE FIRST AMENDED PLAT of VICTOR F. HANKS SUBDIVISION

DIVISION NO. 1
BONNEVILLE COUNTY, IDAHO
BEING A REPLAT OF A PORTION OF VICTOR F. HANKS
SUBDIVISION DIVISION NO. 1

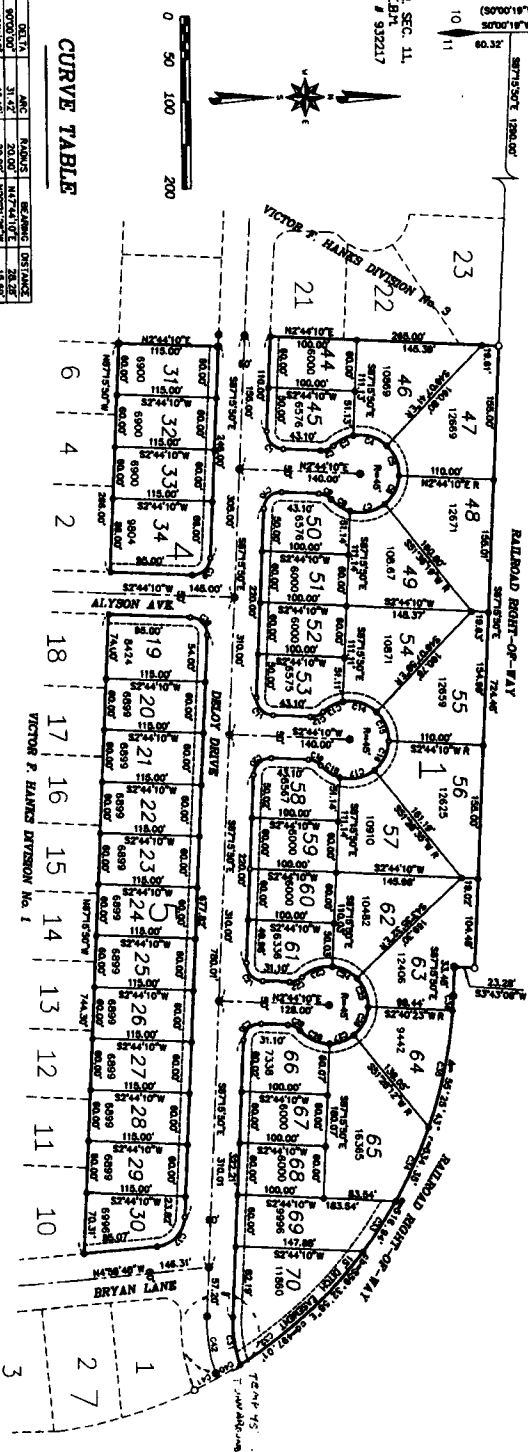
PART OF THE NORTH 1/2 OF THE S.W. 1/4 OF SEC. 11, T. 2 N., R. 38 E.B.M.

First American Title Company
Idaho Falls, Idaho 83404

While this is a photographic reproduction of the recorded plat, the Company assumes no liability for variations, if any, with a re-survey.

NORTH WEST COR. SEC. 11
T.2N. R.38E.B.M.
OFF. INST. # 50076

N. 1/4 COR. SEC. 11,
T.2N. R.38E.B.M.
OFF. INST. # 532217



CURVE TABLE

NAME	DELTA	ARC	RADIUS	BEARING	DISTANCE
C1	90°00'00"	31.42	20.00	S47°24'10"E	28.28
C2	48°11'15"	18.12	20.00	S19°24'10"E	16.52
C3	53°58'57"	42.29	45.00	S18°33'03"W	40.84
C4	48°11'15"	18.12	20.00	S66°18'15"W	17.13
C5	48°11'15"	18.12	20.00	S81°49'42"W	17.13
C6	33°00'00"	26.18	20.00	S52°49'42"W	24.22
C7	33°00'00"	26.18	20.00	S11°14'58"E	24.22
C8	48°11'15"	18.12	20.00	S25°49'42"W	16.88
C9	48°11'15"	18.12	20.00	S41°11'50"E	16.88
C10	90°00'00"	31.42	20.00	S41°11'50"E	28.28
C11	90°00'00"	31.42	20.00	S81°49'42"W	28.28
C12	137°00'00"	28.19	45.00	S28°46'58"E	25.82
C13	137°00'00"	28.19	45.00	S18°14'58"E	25.82
C14	53°58'57"	42.29	45.00	S18°14'58"E	40.84
C15	48°11'15"	18.12	20.00	S81°49'42"W	17.13
C16	48°11'15"	18.12	20.00	S11°14'58"E	17.13
C17	33°00'00"	26.18	20.00	S11°14'58"E	24.22
C18	33°00'00"	26.18	20.00	S25°49'42"W	24.22
C19	48°11'15"	18.12	20.00	S25°49'42"W	16.88
C20	90°00'00"	31.42	20.00	S25°49'42"W	28.28
C21	90°00'00"	31.42	20.00	S41°11'50"E	28.28
C22	48°11'15"	18.12	20.00	S41°11'50"E	16.88
C23	48°11'15"	18.12	20.00	S52°49'42"W	16.88
C24	48°11'15"	18.12	20.00	S52°49'42"W	16.88
C25	48°11'15"	18.12	20.00	S66°18'15"W	16.88
C26	48°11'15"	18.12	20.00	S81°49'42"W	16.88
C27	48°11'15"	18.12	20.00	S81°49'42"W	16.88
C28	48°11'15"	18.12	20.00	S95°18'15"W	16.88
C29	48°11'15"	18.12	20.00	S11°14'58"E	16.88
C30	48°11'15"	18.12	20.00	S25°49'42"W	16.88
C31	48°11'15"	18.12	20.00	S41°11'50"E	16.88
C32	48°11'15"	18.12	20.00	S52°49'42"W	16.88
C33	48°11'15"	18.12	20.00	S66°18'15"W	16.88
C34	48°11'15"	18.12	20.00	S81°49'42"W	16.88
C35	48°11'15"	18.12	20.00	S95°18'15"W	16.88
C36	48°11'15"	18.12	20.00	S11°14'58"E	16.88
C37	48°11'15"	18.12	20.00	S25°49'42"W	16.88
C38	48°11'15"	18.12	20.00	S41°11'50"E	16.88
C39	48°11'15"	18.12	20.00	S52°49'42"W	16.88
C40	48°11'15"	18.12	20.00	S66°18'15"W	16.88
C41	48°11'15"	18.12	20.00	S81°49'42"W	16.88
C42	48°11'15"	18.12	20.00	S95°18'15"W	16.88
C43	48°11'15"	18.12	20.00	S11°14'58"E	16.88
C44	48°11'15"	18.12	20.00	S25°49'42"W	16.88
C45	48°11'15"	18.12	20.00	S41°11'50"E	16.88

NOTES

- 1. All lots are 1/2 acre in area.
- 2. All lots are 1/2 acre in area.
- 3. All lots are 1/2 acre in area.
- 4. All lots are 1/2 acre in area.
- 5. All lots are 1/2 acre in area.
- 6. All lots are 1/2 acre in area.
- 7. All lots are 1/2 acre in area.
- 8. All lots are 1/2 acre in area.
- 9. All lots are 1/2 acre in area.
- 10. All lots are 1/2 acre in area.