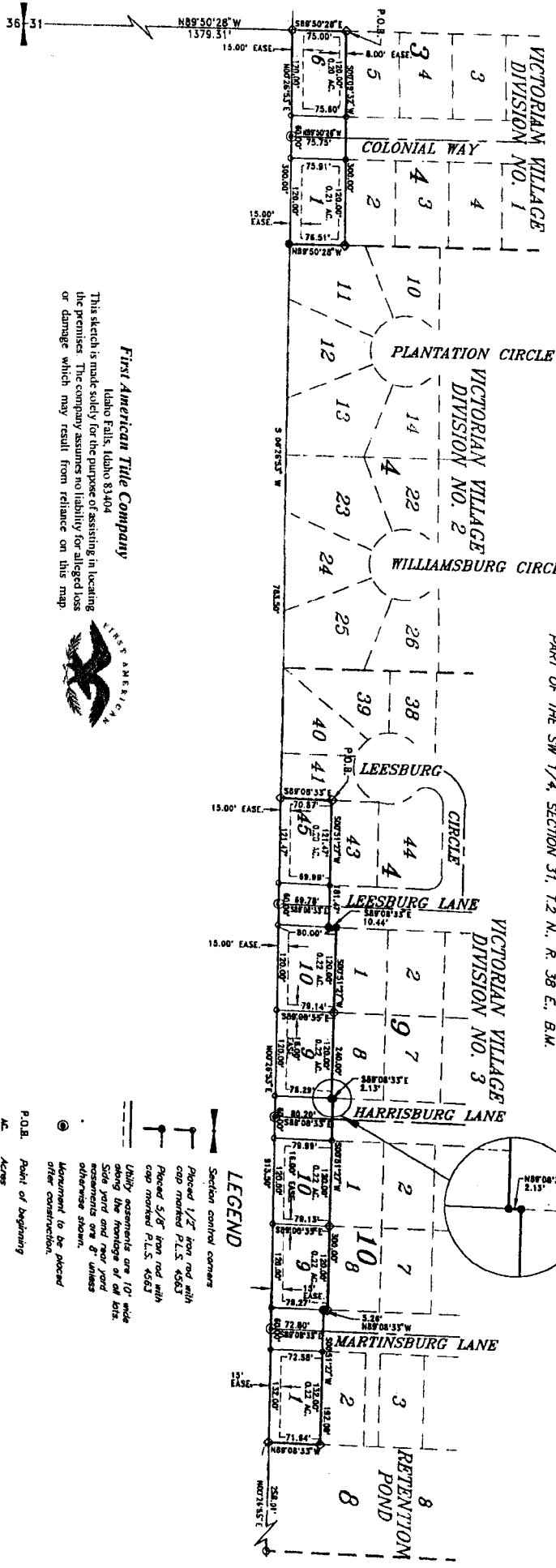


# VICTORIAN VILLAGE DIVISION NO. 11

AN ADDITION TO THE CITY OF IDAHO FALLS, BONNEVILLE COUNTY, IDAHO  
PART OF THE SW 1/4, SECTION 31, T.2 N., R. 38 E., B.M.



**First American Title Company**  
Idaho Falls, Idaho 83404

This sketch is made solely for the purpose of assisting in locating the premises. The company assumes no liability for alleged loss or damage which may result from reliance on this map.



- LEGEND**
- Section control corners
  - Placed 1/2" iron rod with cap marked P.L.S. 4563
  - Placed 5/8" iron rod with cap marked P.L.S. 4563
  - Utility easements are 10' wide along the heritage of all lots. Side yard and rear yard easements are 8' unless otherwise shown.
  - Measurement to be placed after construction.
  - P.O.B. Point of beginning
  - Acres
  - Found 1/2" iron rod with cap marked P.L.S. 4563