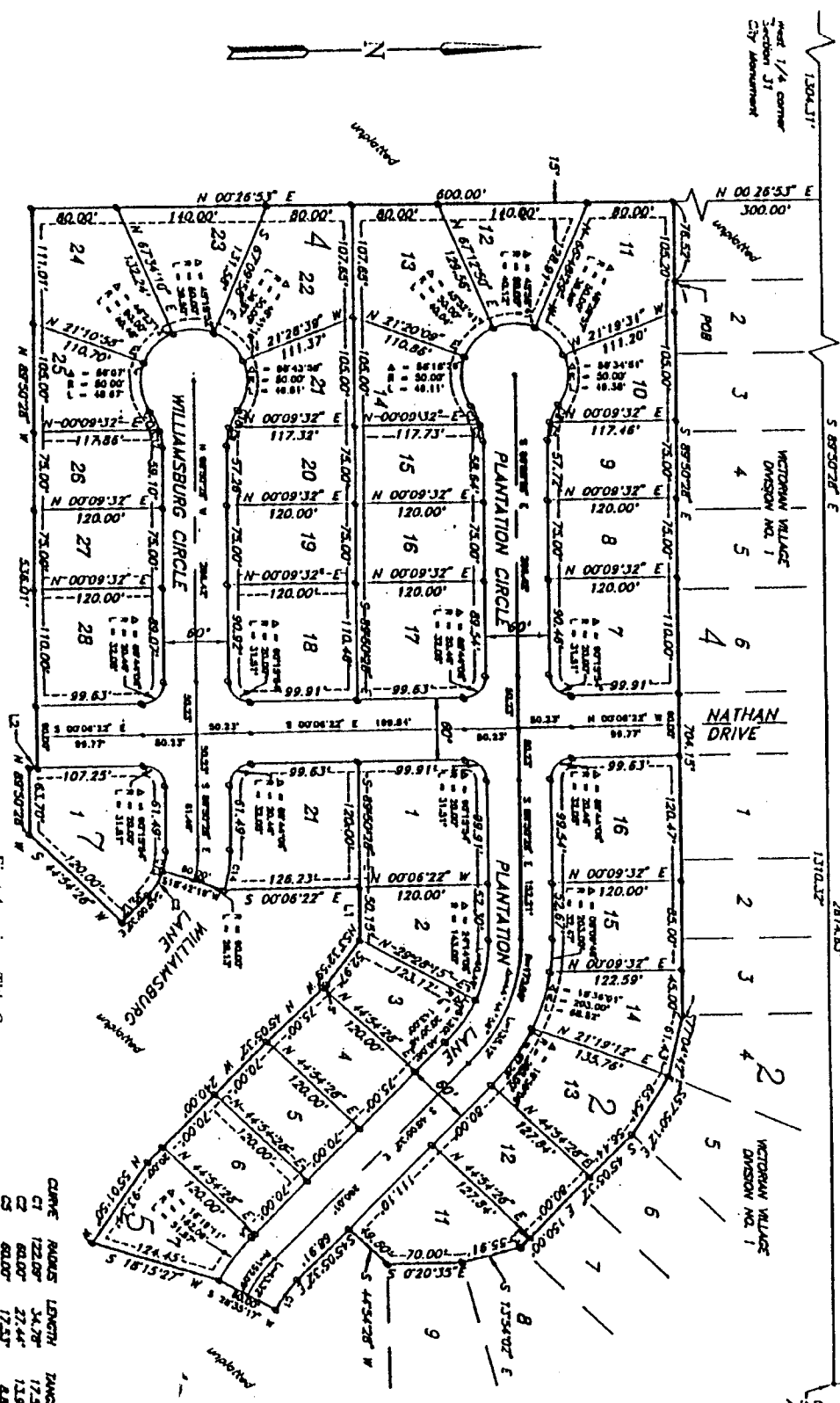


# VICTORIAN VILLAGE

## DIVISION NO. 2

AN ADDITION TO THE CITY OF IDAHO FALLS, BONNEVILLE COUNTY, IDAHO  
PART OF THE SW 1/4, SECTION 31, T.2 N., R. 38 E., B.M.



This sketch is made solely for the purpose of assisting in locating the premises. The company assumes no liability for alleged loss or damage which may result from reliance on this map.

First American Title Company  
Idaho Falls, Idaho 83404



North 1/4 corner  
Section 31  
City Monument

S 00°20'35" E  
2638.41'

Center of  
At Cap

LINE DIRECTION DISTANCE  
L1 N 89°50'28" W 50.15'  
L2 N 00°06'22" W 7.34'  
L3 S 40°53'18" E 11.56'  
L4 S 44°16'50" E 4.85'

### LEGEND

- Section control corners
- Placed 1/2" iron rod with cap marked P.L.S. 4563
- Utility easements are 10' wide along the frontage of all lots. Side yard and rear yard easements are 8' unless otherwise shown.
- Monument to be placed after construction.

CURVE	RADIUS	LENGTH	TANGENT	CHORD	BEARING	DELTA
C1	122.00'	34.78'	17.51'	34.68'	S 37°15'07" E	187°57'17"
C2	82.00'	27.44'	13.95'	27.20'	S 57°11'56" E	287°12'28"
C3	82.00'	17.23'	8.83'	17.47'	S 87°28'12" E	164°44'33"
C4	82.00'	18.22'	9.88'	18.14'	S 67°55'17" E	182°17'6"
C5	82.00'	20.18'	10.18'	20.08'	S 64°47'08" W	187°19'34"
C6	82.00'	16.57'	8.35'	16.51'	S 87°14'25" W	154°48'54"
C7	82.00'	18.07'	9.00'	17.88'	S 87°17'37" E	171°17'08"
C8	82.00'	18.24'	9.40'	18.04'	S 82°17'29" E	173°32'40"
C9	82.00'	20.66'	10.44'	20.56'	S 64°25'42" W	187°43'58"
C10	82.00'	18.08'	9.08'	17.88'	S 87°28'37" W	157°17'38"
C11	82.00'	18.08'	9.08'	17.88'	N 07°28'07" W	44°44'37"
C12	82.00'	18.08'	9.08'	17.88'	N 07°28'07" W	157°17'38"
C13	82.00'	18.08'	9.08'	17.88'	N 07°28'07" W	157°17'38"
C14	122.00'	34.78'	17.51'	34.68'	N 89°50'28" W	187°57'17"