

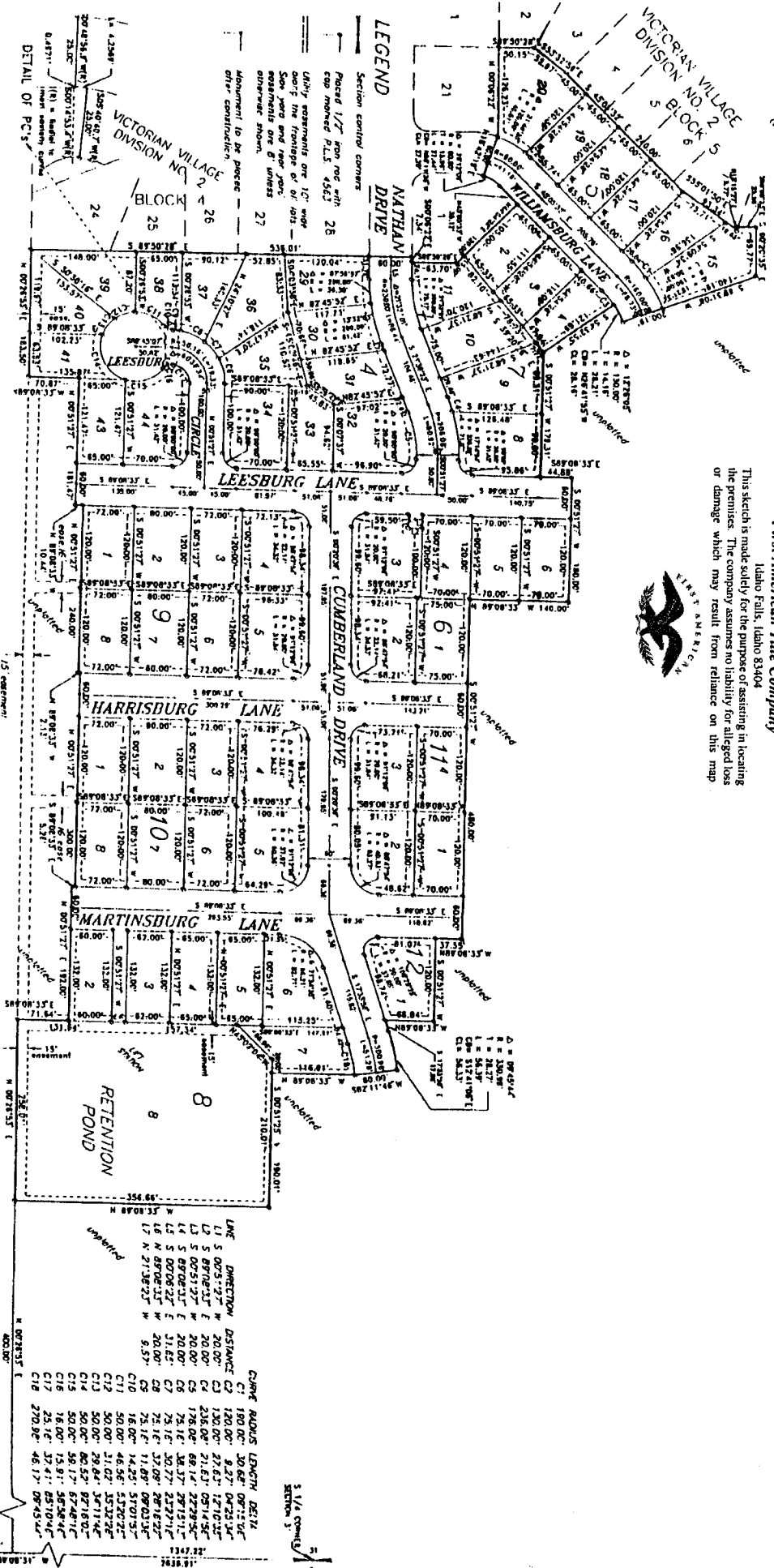
# VICTORIAN VILLAGE DIVISION NO. 3

AN ADDITION TO THE CITY OF IDAHO FALLS, BONNEVILLE COUNTY, IDAHO.  
PART OF THE SW 1/4, SECTION 31, T2 N., R. 35 E., B.M.

First American Title Company

Idaho Falls, Idaho 83404

This sketch is made solely for the purpose of assisting in locating the premises. The company assumes no liability for alleged loss or damage which may result from reliance on this map.



LINE	DIRECTION	DISTANCE	CURVE RADIUS	LENGTH	DEFL.
C1	190.00'	30.68'	87.55'		
C2	120.00'	8.27'	127.53'		
C3	120.00'	27.63'	127.16'		
C4	236.00'	21.63'	281.43'		
C5	176.00'	68.14'	222.94'		
C6	75.16'	36.37'	291.51'		
C7	75.16'	30.77'	237.21'		
C8	75.16'	37.08'	287.63'		
C9	5.37'				
C10	16.00'	14.23'	88.03'		
C11	30.00'	11.07'	57.20'		
C12	30.00'	31.07'	153.22'		
C13	30.00'	29.84'	147.14'		
C14	30.00'	80.57'	371.80'		
C15	50.00'	58.17'	274.81'		
C16	16.00'	15.91'	88.58'		
C17	25.16'	37.41'	187.04'		
C18	270.98'	48.17'	387.45'		

3 1/4 CORNER  
SECTION 31

31 CORNER  
SECTION 31