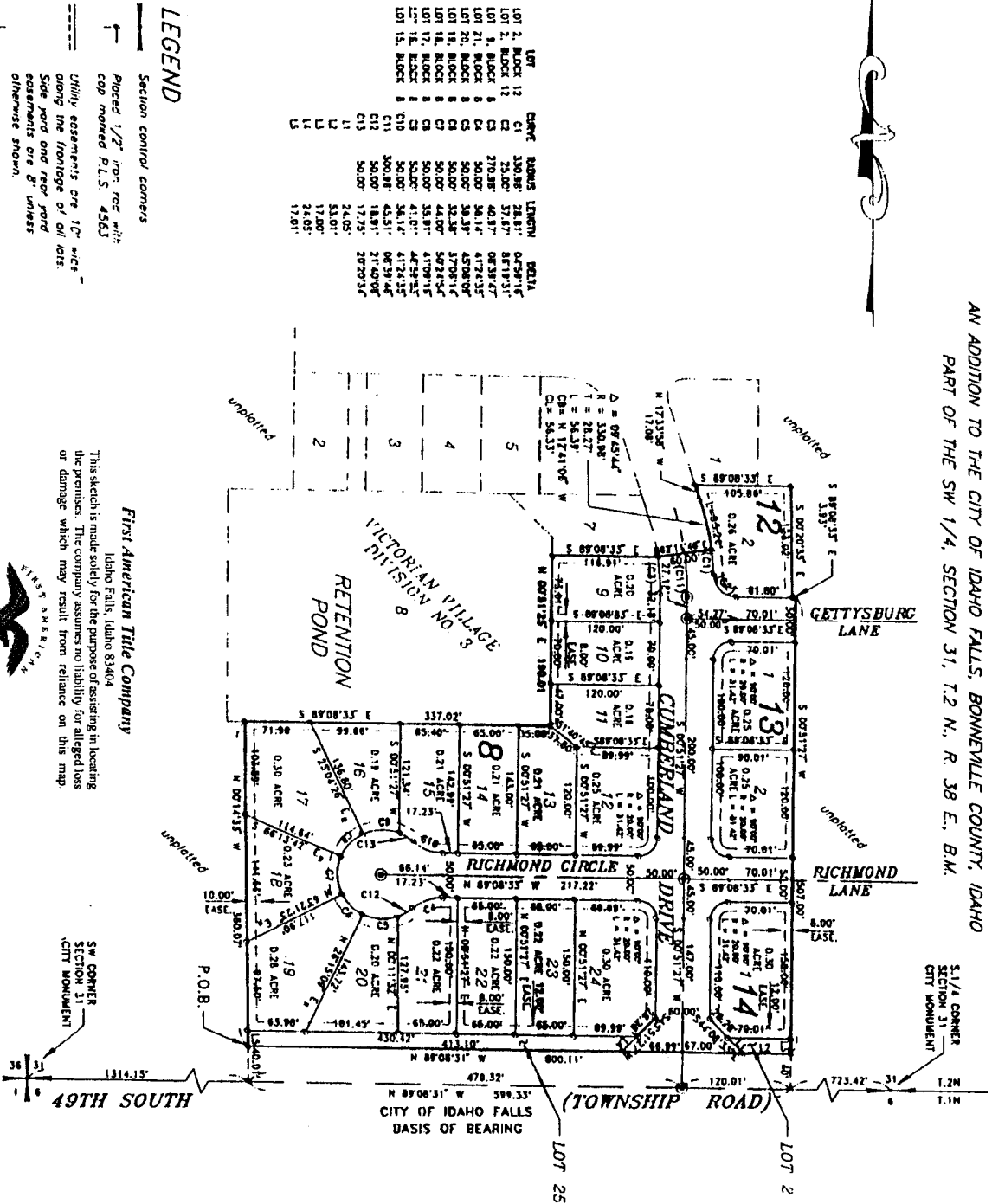


VICTORIAN VILLAGE

DIVISION NO. 4

AN ADDITION TO THE CITY OF IDAHO FALLS, BONNEVILLE COUNTY, IDAHO
PART OF THE SW 1/4, SECTION 31, T.2 N., R. 38 E., B.M.



Section control corners
Placed 1/27 iron rod - 4 1/2"
cap marked P.L.S. 4563

Utility easements are 10' wide
along the frontage of all lots.
Side yard and rear yard
easements are 8' unless
otherwise shown.

Monument to be placed
after construction.

P.O.B. Point of beginning

First American Title Company
Idaho Falls, Idaho 83404

This sketch is made solely for the purpose of assisting in locating
the premises. The company assumes no liability for alleged loss
or damage which may result from reliance on this map.



SW CORNER
SECTION 31
CITY MONUMENT

SW CORNER
SECTION 31
CITY MONUMENT