

VICTORIAN VILLAGE

DIVISION NO. 5

AN ADDITION TO THE CITY OF IDAHO FALLS, BONNEVILLE COUNTY, IDAHO
PART OF THE SW 1/4, SECTION 31, T.2 N., R. 38 E., B.M.

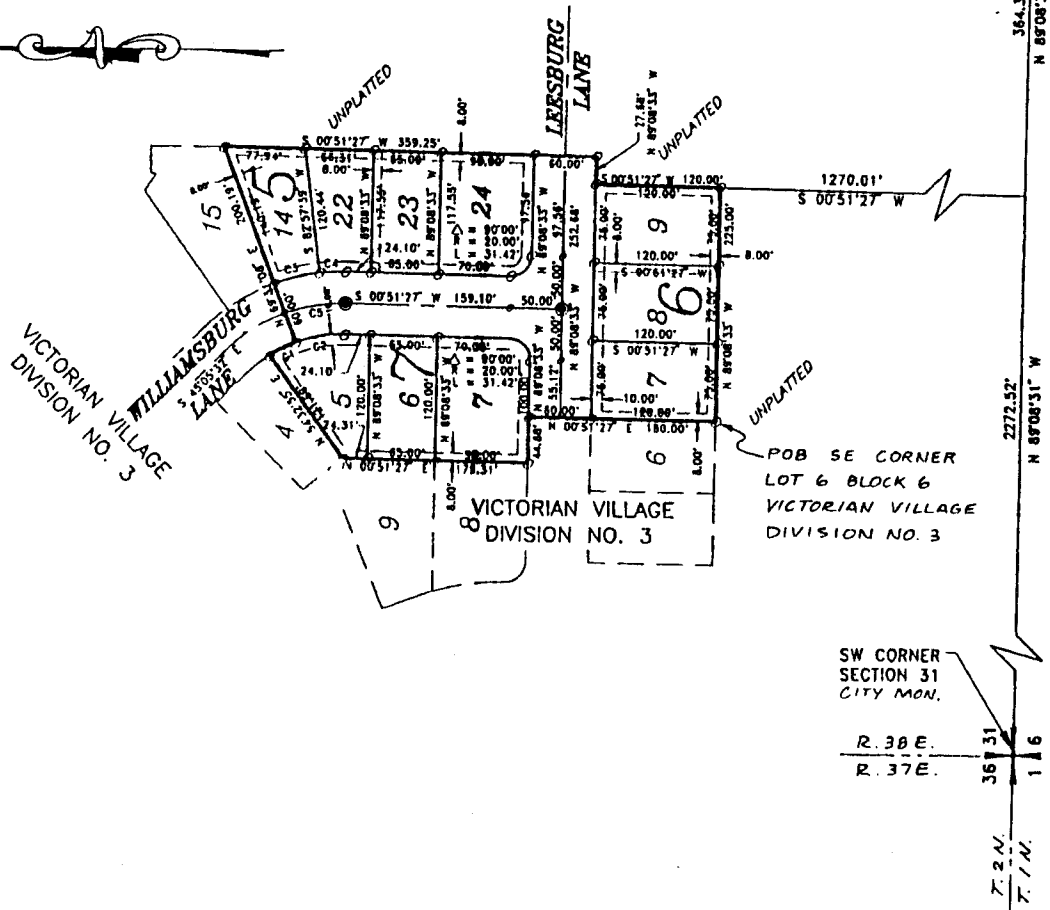
First American Title Company

Idaho Falls, Idaho 83404

This sketch is made solely for the purpose of assisting in locating the premises. The company assumes no liability for alleged loss or damage which may result from reliance on this map.



S 1/4 CORNER
SECTION 31
CITY MON.



CURVE	RADIUS	LENGTH	DELTA
C1	130.00'	28.21'	17°26'05"
C2	130.00'	48.42'	21°20'19"
C3	190.00'	45.02'	13°34'34"
C4	190.00'	25.74'	07°45'45"
C5	160.00'	59.59'	21°20'19"

LEGEND

- Section control corners
- Placed 1/2" iron rod with cap marked P.L.S. 4563
- Utility easements are 10' wide along the frontage of all lots. Side yard and rear yard easements are 8' unless otherwise shown.
- Monument to be placed after construction.