



# VICTORIAN VILLAGE DIVISION NO. 6

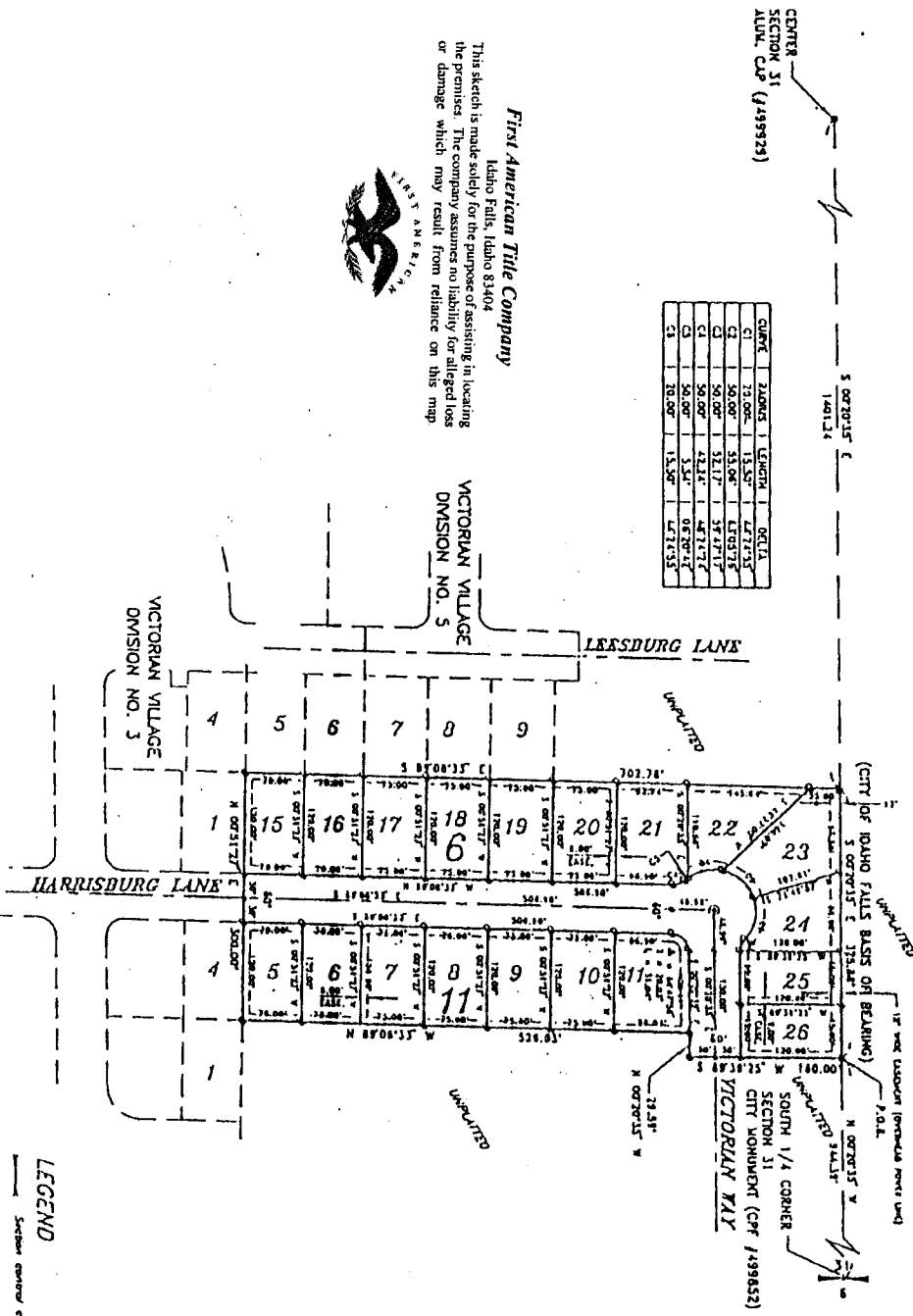
AN ADDITION TO THE CITY OF IDAHO FALLS, BONNEVILLE COUNTY, IDAHO  
PART OF THE SW 1/4, SECTION 31, T2 N., R. 38 E., B.M.

CENTER SECTION 31  
ALUM. CAP (#499929)

CURVE	2 ADJACENT	LENGTH	BEARING
C1	73.00'	15.50'	L47°17'S
C2	50.00'	35.00'	L60°57'E
C3	50.00'	52.17'	S87°17'E
C4	50.00'	42.34'	L48°17'E
C5	50.00'	5.54'	O87°07'E
C6	20.00'	15.50'	L47°15'S

First American Title Company  
Idaho Falls, Idaho 83404

This sketch is made solely for the purpose of assisting in locating the premises. The company assumes no liability for alleged loss or damage which may result from reliance on this map.



- LEGEND**
- Section corner
  - Point 1/2" iron rod with one marked PLS 2563
  - Point 3/4" iron rod with one marked PLS 4563
  - Utility easements are 10' wide using the fringeage of all lots. Set point and new yard easements are 7' wide.
  - Measurements to be given after construction.
  - Point of beginning