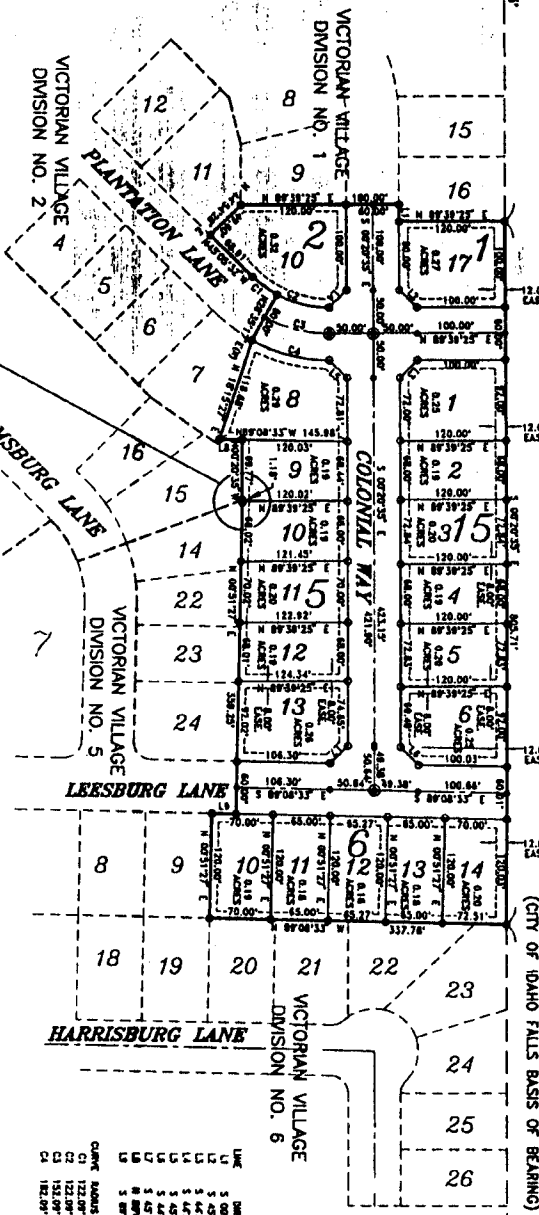




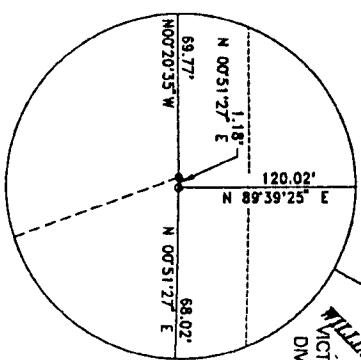
VICTORIAN VILLAGE DIVISION NO. 7

AN ADDITION TO THE CITY OF IDAHO FALLS, BONNEVILLE COUNTY, IDAHO
PART OF THE SW 1/4, SECTION 31, T. 2 N., R. 38 E., B.M.

CENTER
SECTION 31
ALUM. CAP (CPF# 439929)



LINE	SECTION	LENGTH	CHORD	BEARING	DETA.
C1	122.00'	34.78'	34.64'	S 87.50° E	181.81'
C2	122.00'	34.42'	34.34'	S 87.50° E	431.93'
C3	122.00'	73.80'	73.57'	N 73.52° W	280.93'
C4	122.00'	71.83'	71.57'	N 73.52° W	270.35'
D1	122.00'	34.78'	34.64'	S 87.50° E	181.81'
D2	122.00'	34.42'	34.34'	S 87.50° E	431.93'
D3	122.00'	73.80'	73.57'	N 73.52° W	280.93'
D4	122.00'	71.83'	71.57'	N 73.52° W	270.35'



- LEGEND**
- Section corner
 - Found 5/8" iron rod with cap marked P.L.S. 4563
 - Proposed 1/2" iron rod with cap marked P.L.S. 4563
 - Utility easements are 10' wide along the frontage of all lots. Side yard and rear yard easements are 5' unless otherwise shown.
 - Monument to be placed after construction.

First American Title Company
Idaho Falls, Idaho 83404

This sketch is made solely for the purpose of assisting in locating the premises. The company assumes no liability for alleged loss or damage which may result from reliance on this map.



(CITY OF IDAHO FALLS BASIS OF BEARING)
UNPLATTED

SOUTH 1/4 CORNER
SECTION 31
CITY MONUMENT (CPF #439852)
VICTORIAN WAY