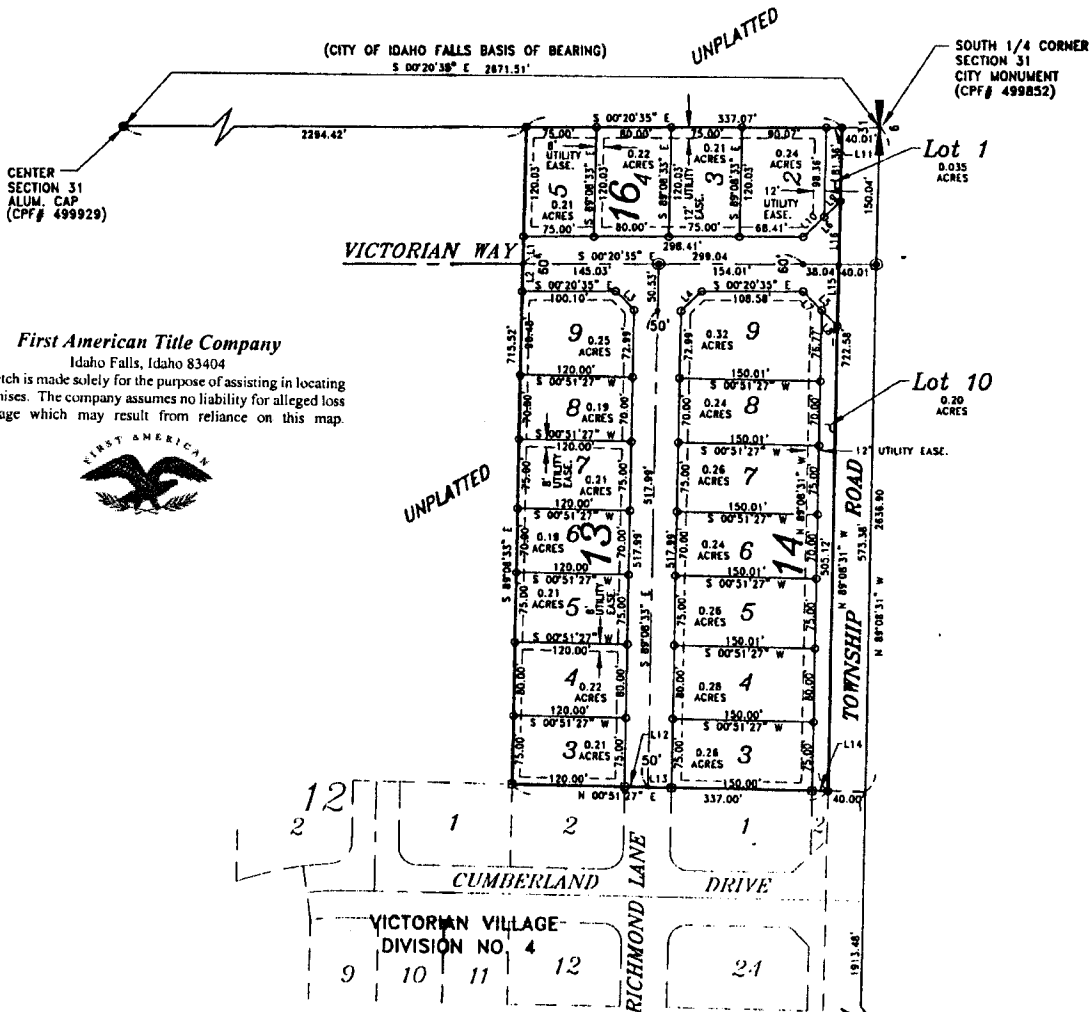




VICTORIAN VILLAGE DIVISION NO. 8

AN ADDITION TO THE CITY OF IDAHO FALLS, BONNEVILLE COUNTY, IDAHO
PART OF THE SW 1/4, SECTION 31, T.2 N., R. 38 E., B.M.



CENTER
SECTION 31
ALUM. CAP
(CPF# 499929)

First American Title Company
Idaho Falls, Idaho 83404

This sketch is made solely for the purpose of assisting in locating the premises. The company assumes no liability for alleged loss or damage which may result from reliance on this map.



UNPLATTED

UNPLATTED

SOUTH 1/4 CORNER
SECTION 31
CITY MONUMENT
(CPF# 499852)

Lot 1
0.035
ACRES

Lot 10
0.20
ACRES

12

CUMBERLAND LANE

VICTORIAN VILLAGE
DIVISION NO. 4

RICHMOND LANE

TOWNSHIP ROAD

SW CORNER
SECTION 31
CITY MONUMENT
(CPF# 499853)

LEGEND

- Section control corners
- Placed 1/2" iron rod with cap marked P.L.S. 4563
- Placed 5/8" iron rod with cap marked P.L.S. 4563
- Found 1/2" iron rod with cap marked P.L.S. 4563
- Utility easements are 10' wide along the frontage of all lots. Side yard and rear yard easements are 8' unless otherwise shown.
- Monument to be placed after construction.
- P.O.B. Point of beginning

LINE	DIRECTION	DISTANCE
L1	N 89°08'33" W	30.00'
L2	S 89°08'33" E	30.01'
L3	S 45°51'27" W	27.84'
L4	S 44°44'33" E	30.08'
L5	S 45°15'27" W	52.38'
L6	S 4°44'33" E	58.28'
L7	S 45°15'27" W	28.58'
L8	S 45°15'27" W	23.80'
L9	N 44°44'33" W	24.50'
L10	N 44°44'33" W	30.98'
L11	S 00°20'35" E	17.00'
L12	S 00°51'27" W	25.00'
L13	S 00°51'27" W	25.00'
L14	S 00°51'27" W	17.00'
L15	N 89°08'31" W	67.42'
L16	S 89°08'31" E	48.68'