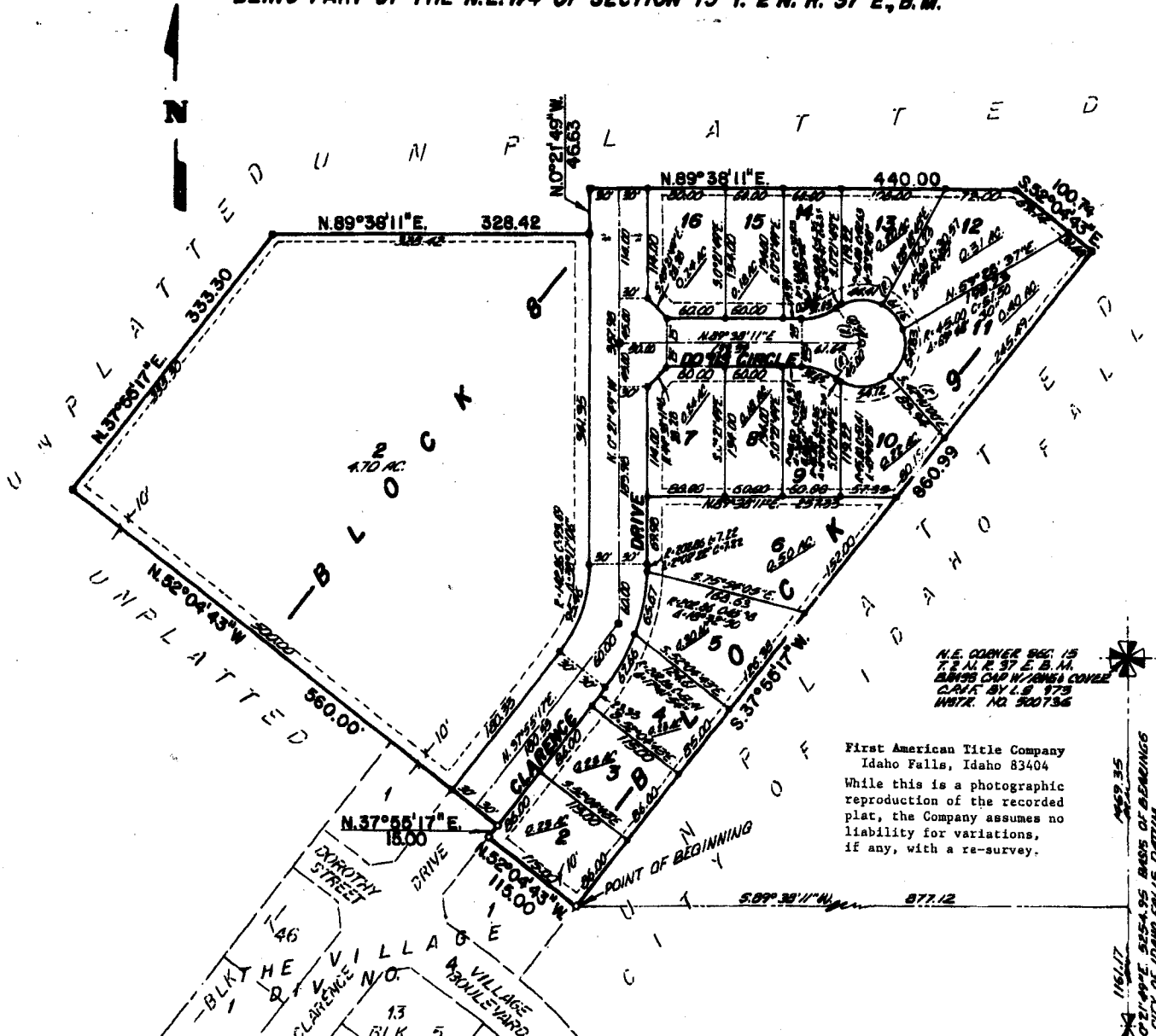


The Village

DIVISION NO. 10
AN ADDITION TO THE CITY OF IDAHO FALLS, BONNEVILLE COUNTY, IDAHO
BEING PART OF THE N.E.1/4 OF SECTION 15 T. 2 N. R. 37 E., B.M.



N.E. CORNER SEC. 15
 T. 2 N. R. 37 E. B. M.
 BENCH CAP W/ IRON CONCRETE
 CLARK BY L.S. 973
 INSTR. NO. 500736

First American Title Company
 Idaho Falls, Idaho 83404
 While this is a photographic
 reproduction of the recorded
 plat, the Company assumes no
 liability for variations,
 if any, with a re-survey.

LEGEND & NOTES

- 5/8" x 30" Steel Re-bar set with plastic cap stamped L.S.8795
- 1/2" x 24" Steel Re-bar set with plastic cap stamped L.S.8795
- 5/8" Steel Re-bar found with caps stamped L.S.8795
- 1/2" Steel Re-bar found with caps stamped L.S.8795

A fifteen foot wide Utility Easement is hereby granted along all road frontages within each lot.
 All other utility easements are eight feet wide unless otherwise noted.

N.E. CORNER SEC. 15
 T. 2 N. R. 37 E. B. M.
 BENCH CAP W/ IRON CONCRETE
 CLARK BY L.S. 1480
 INSTR. NO. 805618

SECTION LINE S. 02° 19' 41" E. 9254.95' BASE OF BEARINGS
 CITY OF IDAHO FALLS DARTON
 116.17
 1459.35