

The Village

DIVISION NO. 11
AN ADDITION TO THE CITY OF IDAHO FALLS,
BONNEVILLE COUNTY, IDAHO
BEING PART OF THE NE 1/4 OF SECTION 15, T.2N, R.37E. B.M.

ALUMINUM CAP
 N 1/4 COR. SECTION 15
 T.2N. R.37E. B.M.
 CP&F BY I.T.D. L.S. 4734
 INSTR. No. 844084

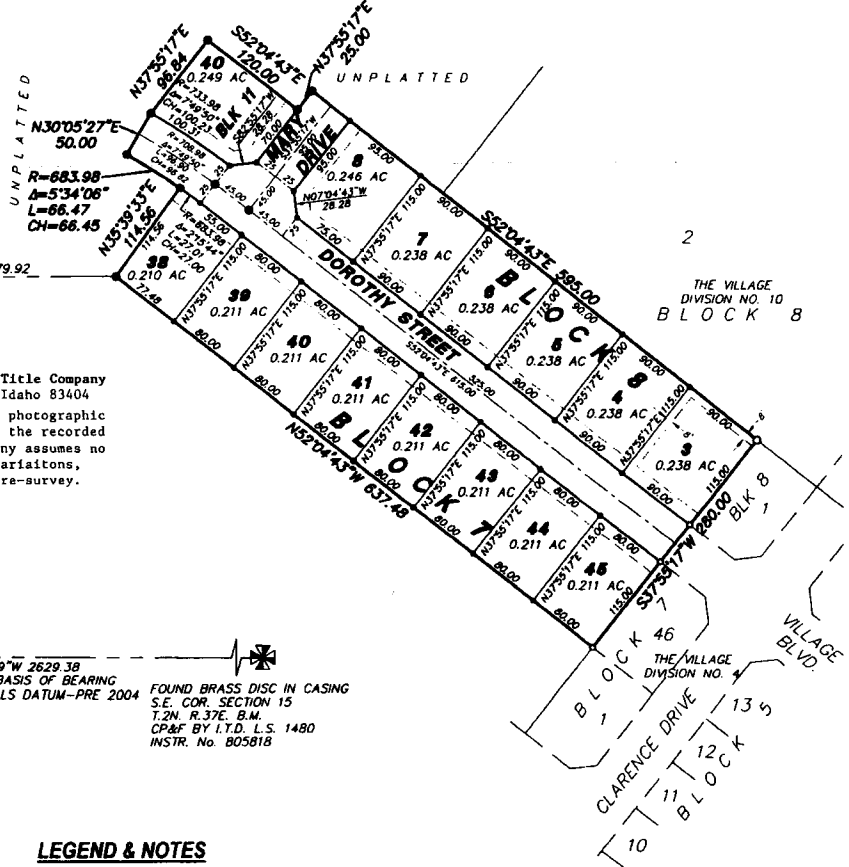
1158.45
 4702.20
 N00°15'35"W 5260.65

First American Title Company
 Idaho Falls, Idaho 83404
 While this is a photographic
 reproduction of the recorded
 plat, the Company assumes no
 liability for variations,
 if any, with a re-survey.

5/8" I.R. WITH PLASTIC CAP
 STAMPED I.T.D. L.S. 4743
 S 1/4 COR. SECTION 15
 T.2N. R.37E. B.M.
 CP&F BY I.T.D. L.S. 4734
 INSTR. No. 904718

N89°42'39"W 2629.38
 SECTION LINE-BASIS OF BEARING
 CITY OF IDAHO FALLS DATUM-PRE 2004

FOUND BRASS DISC IN CASING
 S.E. COR. SECTION 15
 T.2N. R.37E. B.M.
 CP&F BY I.T.D. L.S. 1480
 INSTR. No. B05818



LEGEND & NOTES

- 5/8" x 30" Steel Re-bar set with plastic cap stamped L.S. 8795
 - 1/2" x 24" Steel Re-bar set with plastic cap stamped L.S. 8795
 - 5/8" Steel Re-bar found with caps stamped L.S. 8795
 - 1/2" Steel Re-bar found with caps stamped L.S. 8795
- A fifteen foot wide Utility Easement is hereby granted along all road frontages within each lot. All other utility easements are eight feet wide unless otherwise noted.