

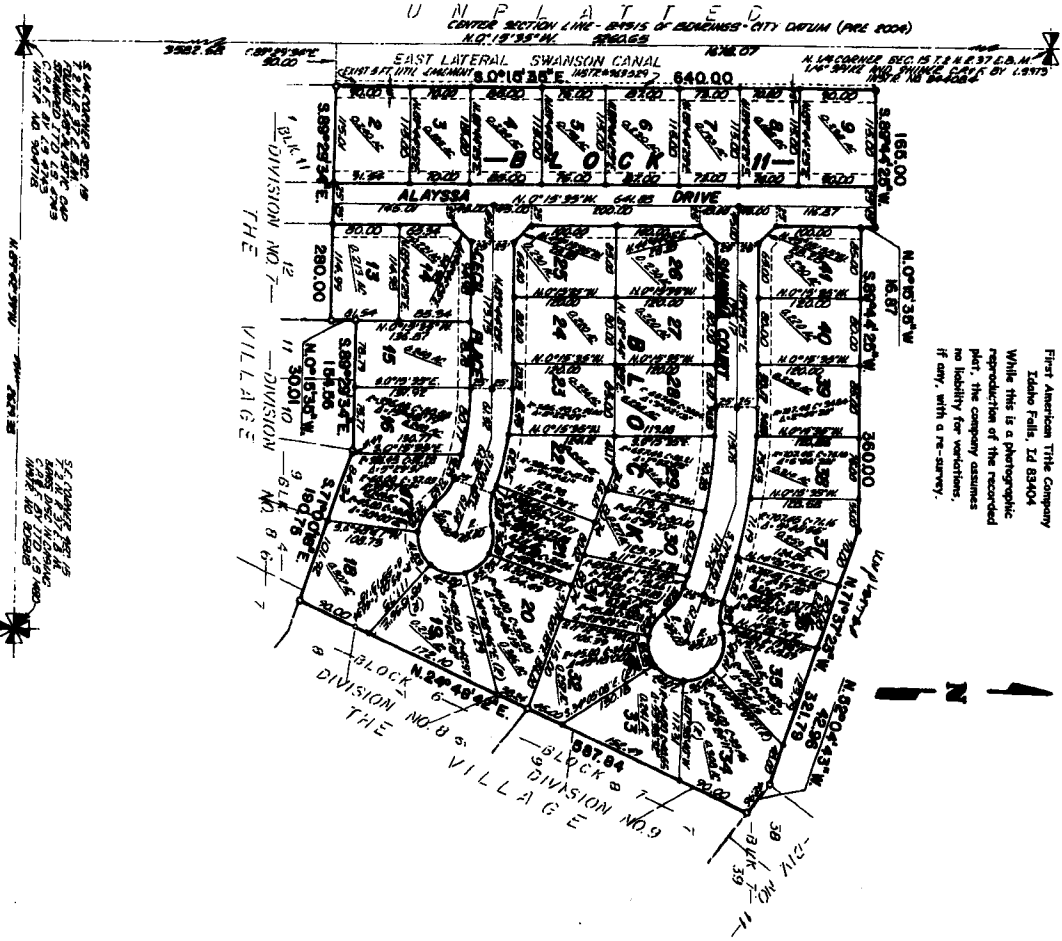


**DIVISION NO. 12**  
 AN ADDITION TO THE CITY OF IDAHO FALLS, BONNEVILLE COUNTY, IDAHO  
 BEING PART OF THE N.E. 1/4 OF SECTION 15 T. 2 N. R. 37 E. B.M.

**LEGEND & NOTES**

- 5/8" - 3/8" Steel Reinforcing Bars spaced @ 12" O.C.
  - 1/2" - 3/8" Steel Reinforcing Bars spaced @ 12" O.C.
  - 5/8" - 3/8" Steel Reinforcing Bars spaced @ 12" O.C.
  - 1/2" - 3/8" Steel Reinforcing Bars spaced @ 12" O.C.
1. All other notes and specifications shall govern in the event of any conflict with the notes and specifications herein.

First American Title Company  
 Idaho Falls, ID 83404  
 While this is a photographic reproduction of the recorded plat, the company assumes no liability for variations, if any, with a re-survey.



3. All other notes and specifications shall govern in the event of any conflict with the notes and specifications herein.

3. All other notes and specifications shall govern in the event of any conflict with the notes and specifications herein.