

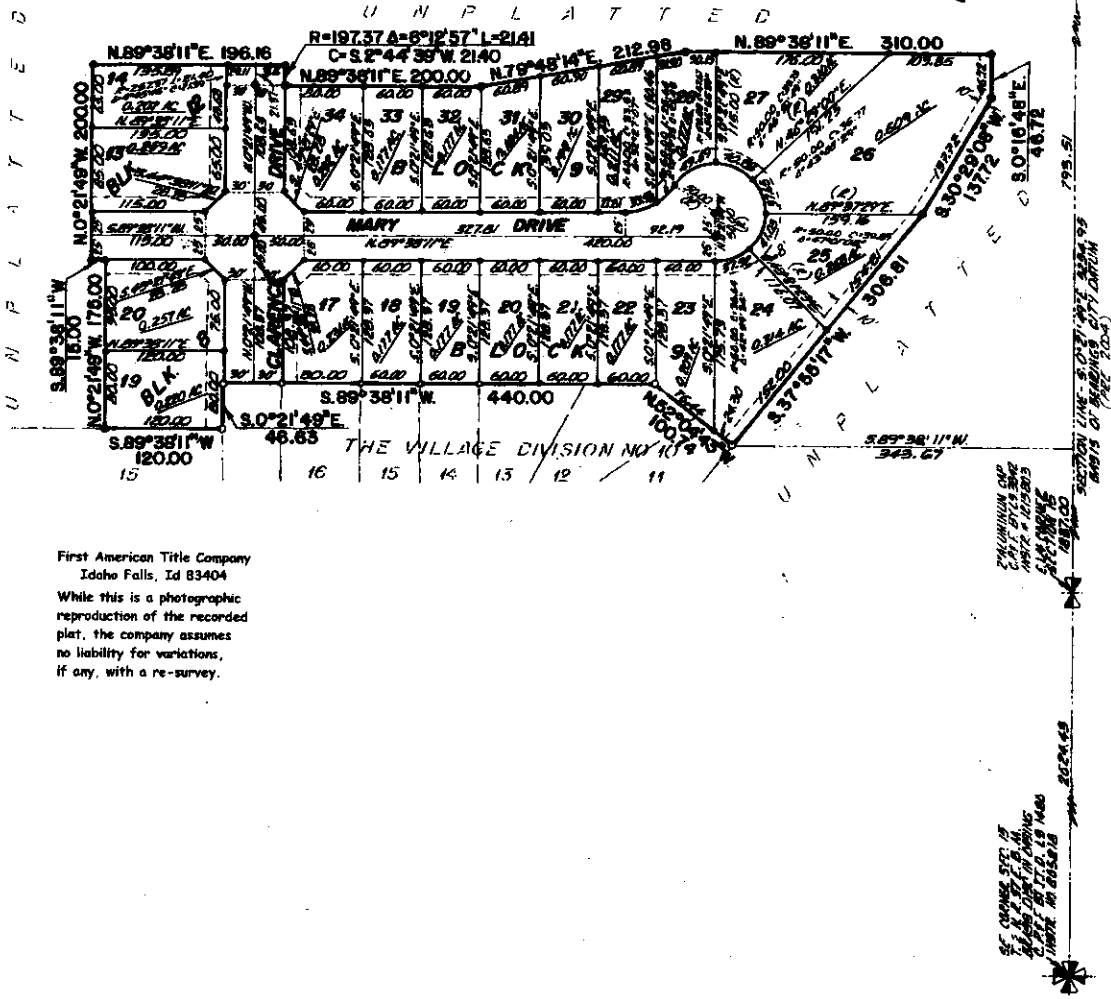
The Village

DIVISION NO. 13
AN ADDITION TO THE CITY OF IDAHO FALLS, BONNEVILLE COUNTY, IDAHO
BEING PART OF THE N.E. 1/4 OF SECTION 15 T. 2 N. R. 37 E., B.M.

LEGEND & NOTES

- 58" x 36" Steel Re-bar set with plastic cap stamped L.S.8785
- 12" x 24" Steel Re-bar set with plastic cap stamped L.S.8785
- 58" Steel Re-bar found with caps stamped L.S.8785
- 12" Steel Re-bar found with caps stamped L.S.8785

A 5-foot foot wide Utility Easement is hereby granted along all road frontages within each lot. All other utility easements are right first hand unless otherwise noted.



First American Title Company
 Idaho Falls, Id 83404
 While this is a photographic reproduction of the recorded plat, the company assumes no liability for variations, if any, with a re-survey.