

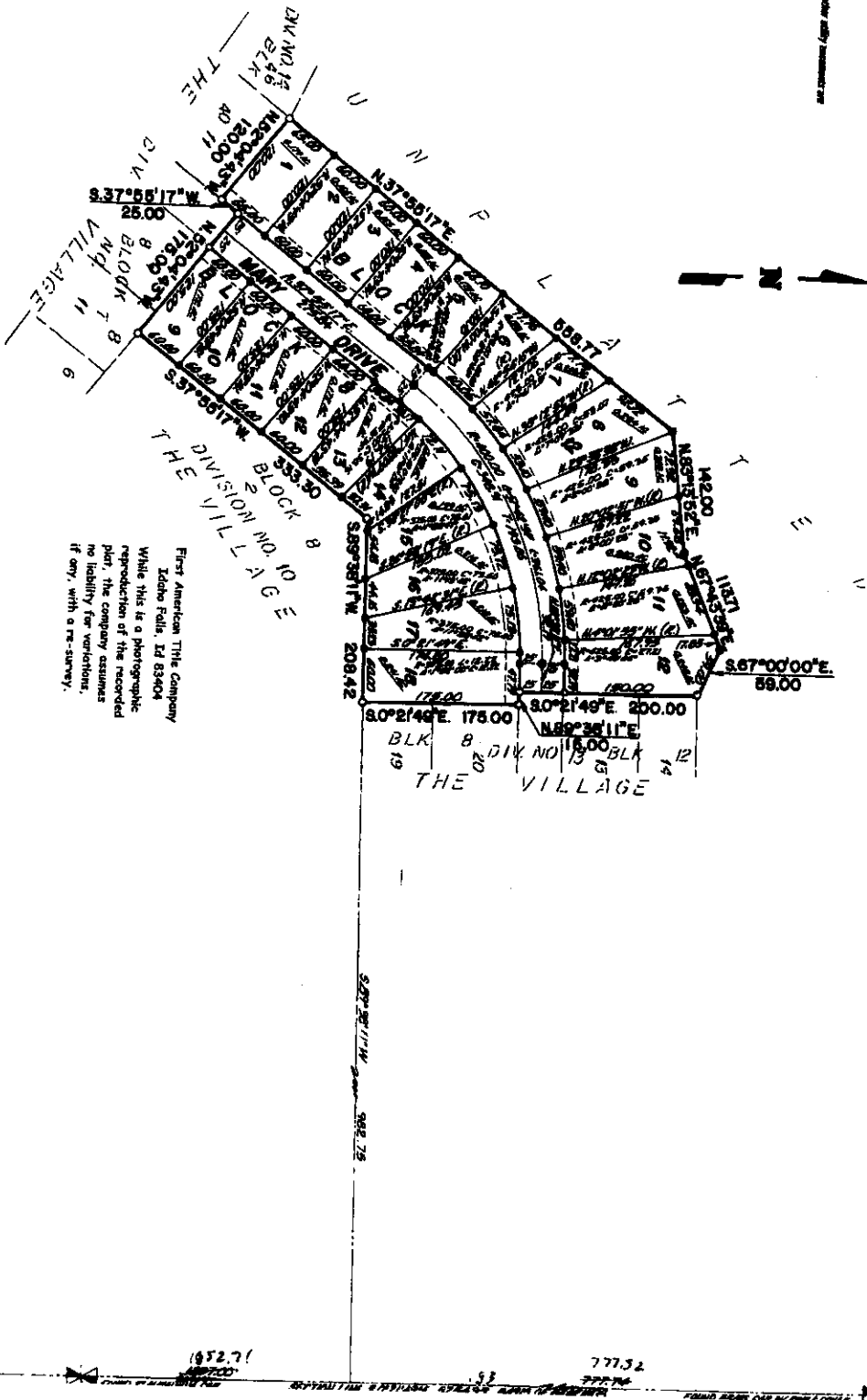


LEGEND & NOTES

- 5/8" x 3/8" Small Plate and small plate cap stamped L.S.2795
- 1/2" x 3/4" Small Plate and small plate cap stamped L.S.2795
- 3/8" Small Plate and small plate cap stamped L.S.2795
- 1/2" Small Plate and small plate cap stamped L.S.2795

A Return from the Idaho Forestry Commission is hereby presented showing that the above property is not a forest land and is not subject to the provisions of the Idaho Forestry Act.

DIVISION NO. 15
AN ADDITION TO THE CITY OF IDAHO FALLS, BONNEVILLE COUNTY, IDAHO
BEING PART OF THE N.E. 1/4 OF SECTION 15 T. 2 N. R. 37 E. S. 8 M.



First American Title Company
 Idaho Falls, ID 83404
 While this is a photographic
 reproduction of the recorded
 plat, the company assumes
 no liability for variations,
 if any, with a re-survey.

2624.37

652.71

771.52