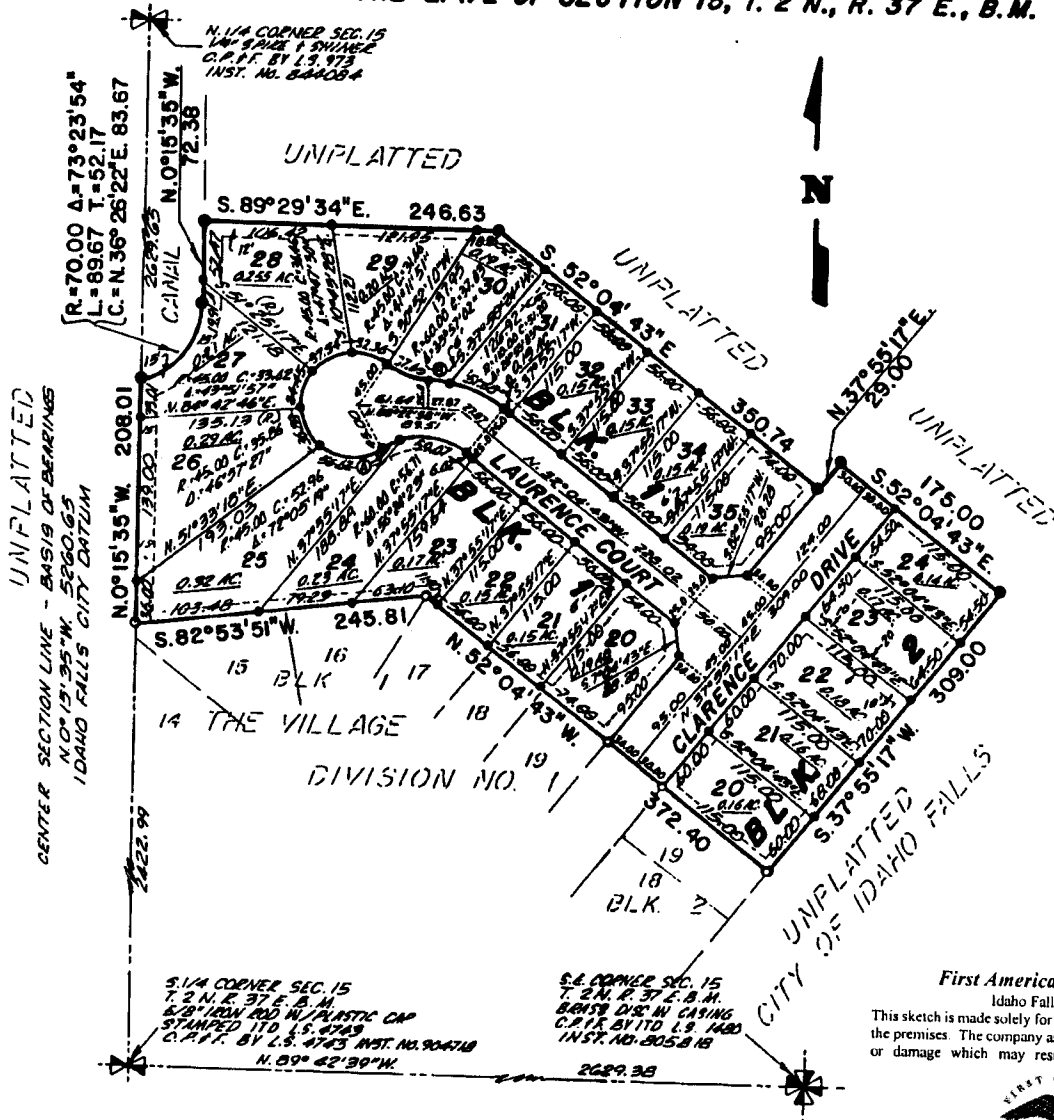


# The Village

**DIVISION NO. 2**  
**AN ADDITION TO THE CITY OF IDAHO FALLS, BONNEVILLE COUNTY, IDAHO**  
 BEING PART OF THE E. 1/2 OF SECTION 15, T. 2 N., R. 37 E., B.M.



UNPLATTED  
 CENTER SECTION LINE - BASIS OF BEARINGS  
 N. 0° 15' 35" W. 590.65'  
 IDAHO FALLS CITY CENTER

SUPPLEMENTAL CURVE DATA				
CURVE	RADIUS	DELTA	LENGTH	CHORD
A	60.00	15° 50' 54"	16.60	16.54
B	110.00	9° 23' 10"	18.02	18.00

**First American Title Company**  
 Idaho Falls, Idaho 83404  
 This sketch is made solely for the purpose of assisting in locating the premises. The company assumes no liability for alleged loss or damage which may result from reliance on this map.



- LEGEND & NOTES**
- 5/8" x 30" Steel Re-bar set with plastic cap stamped L.S. 827
  - 1/2" x 24" Steel Re-bar set with plastic cap stamped L.S. 827
  - Steel Re-bar found with caps stamped L.S. 827
- A ten foot wide Utility Easement is hereby granted along all road frontages within each lot. All other easements are Eight feet wide unless otherwise noted.