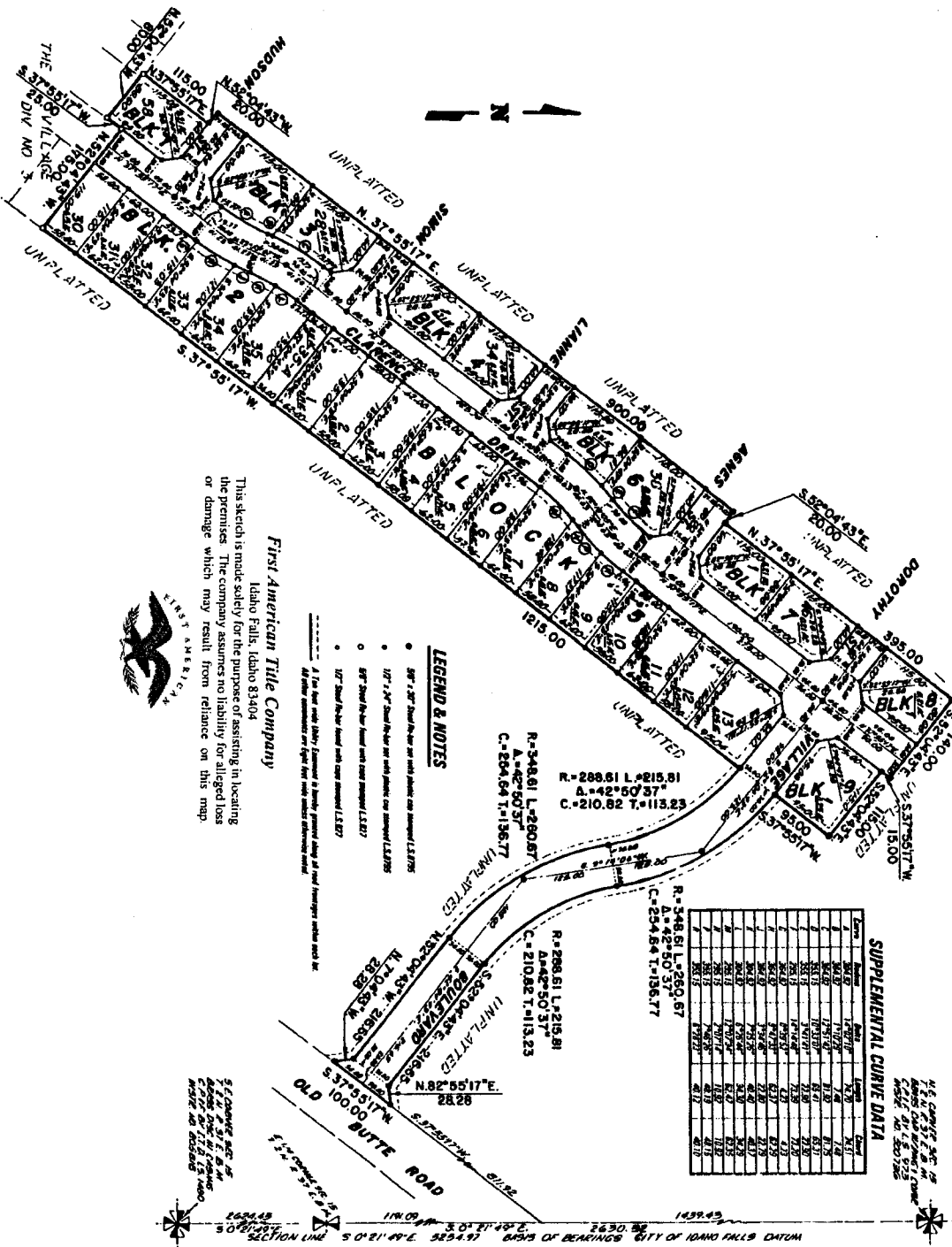


The Village

DIVISION NO. 4
 AN ADDITION TO THE CITY OF IDAHO FALLS, BONNEVILLE COUNTY, IDAHO
 BEING PART OF THE N.E. 1/4 OF SECTION 15 T. 2 N. R. 37 E. B. M.



SUPPLEMENTAL CURVE DATA

Station	Station	Station	Station	Station	Station	Station	Station	Station	Station	Station	Station	Station	Station	Station	Station	Station	Station	Station	Station	Station																																																																															
1	2	3	4	5	6	7	8	9	10	11	12	13	14	15	16	17	18	19	20	21	22	23	24	25	26	27	28	29	30	31	32	33	34	35	36	37	38	39	40	41	42	43	44	45	46	47	48	49	50	51	52	53	54	55	56	57	58	59	60	61	62	63	64	65	66	67	68	69	70	71	72	73	74	75	76	77	78	79	80	81	82	83	84	85	86	87	88	89	90	91	92	93	94	95	96	97	98	99	100

First American Title Company
 Idaho Falls, Idaho 83404

This sketch is made solely for the purpose of assisting in locating the premises. The company assumes no liability for alleged loss or damage which may result from reliance on this map.



- LEGEND & NOTES**
- 50' x 20' Small lots not yet subdivided, see amended L.S. 8785
 - 10' x 20' Small lots not yet subdivided, see amended L.S. 8785
 - 50' x 20' Small lots not yet subdivided, see amended L.S. 8785
 - 10' x 20' Small lots not yet subdivided, see amended L.S. 8785
 - 10' x 20' Small lots not yet subdivided, see amended L.S. 8785

5' CHANGING TO 10' AT
 100.00 BUTTE ROAD
 100.00 BUTTE ROAD
 100.00 BUTTE ROAD

SECTION LINE S 0° 21' 49" E 589.47' BOUND OF BEARINGS CITY OF IDAHO FALLS DATUM