

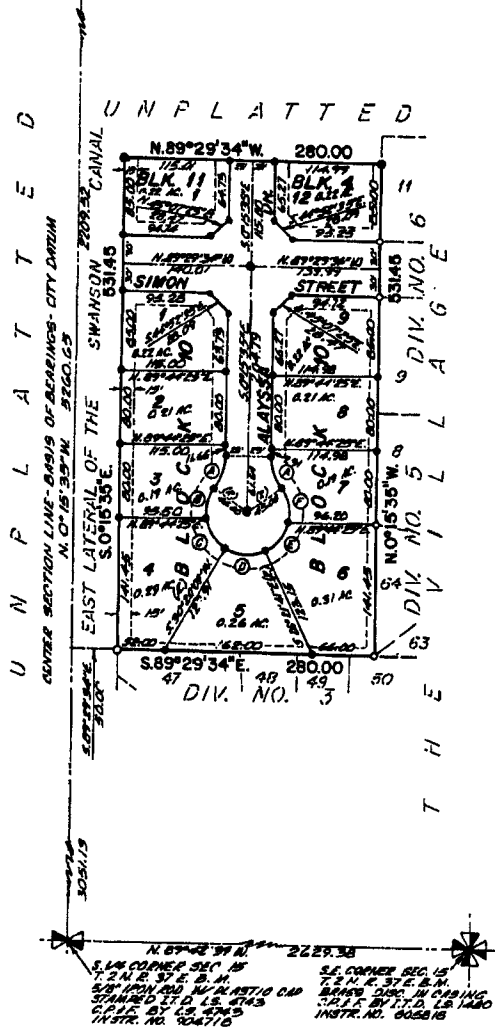
The Village

N.W. CORNER SEC. 15 T. 2 N. R. 37 E. B.M.
 1/4" SCALE, 1" = 40' METRIC CAP L.S. 8713
 INSTR. NO. 844084

DIVISION NO. 7
 AN ADDITION TO THE CITY OF IDAHO FALLS, BONNEVILLE COUNTY, IDAHO
 BEING PART OF THE N.E. 1/4 OF SECTION 15 T. 2 N. R. 37 E. B. M.

First American Title Company

Idaho Falls, Idaho 83404
 This sketch is made solely for the purpose of assisting in locating the premises. The company assumes no liability for alleged loss or damage which may result from reliance on this map.



CURVE DATA

Curve	Station	Length	Chord	Chord Bearing
A	11.00	31.00	31.00	S. 17° 42' 30\"/>
B	42.00	44.00	31.00	S. 54° 14' 12\"/>
C	65.00	50.00	30.54	S. 54° 14' 12\"/>
D	65.00	50.00	42.74	S. 88° 10' 42\"/>
E	65.00	50.00	38.28	S. 88° 10' 42\"/>
F	65.00	49.32	38.77	N. 11° 19' 36\"/>

LEGEND & NOTES

- 50' x 30' Steel Pin-ker with plastic cap stamped L.S. 8795
- 10' x 24' Steel Pin-ker with plastic cap stamped L.S. 8795
- 50' Steel Pin-ker (wood) with caps stamped L.S. 8795
- 10' Steel Pin-ker (wood) with caps stamped L.S. 8795

N. 67° 42' 59\"/>
 S.W. CORNER SEC. 15
 T. 2 N. R. 37 E. B.M.
 50' PIN AND METRIC CAP
 STAMPED L.S. 8743
 C.P.C. BY L.S. 8743
 INSTR. NO. 806710

S.E. CORNER SEC. 15
 T. 2 N. R. 37 E. B.M.
 MARK SET IN CHAINS
 SET BY L.S. 1440
 INSTR. NO. 905816