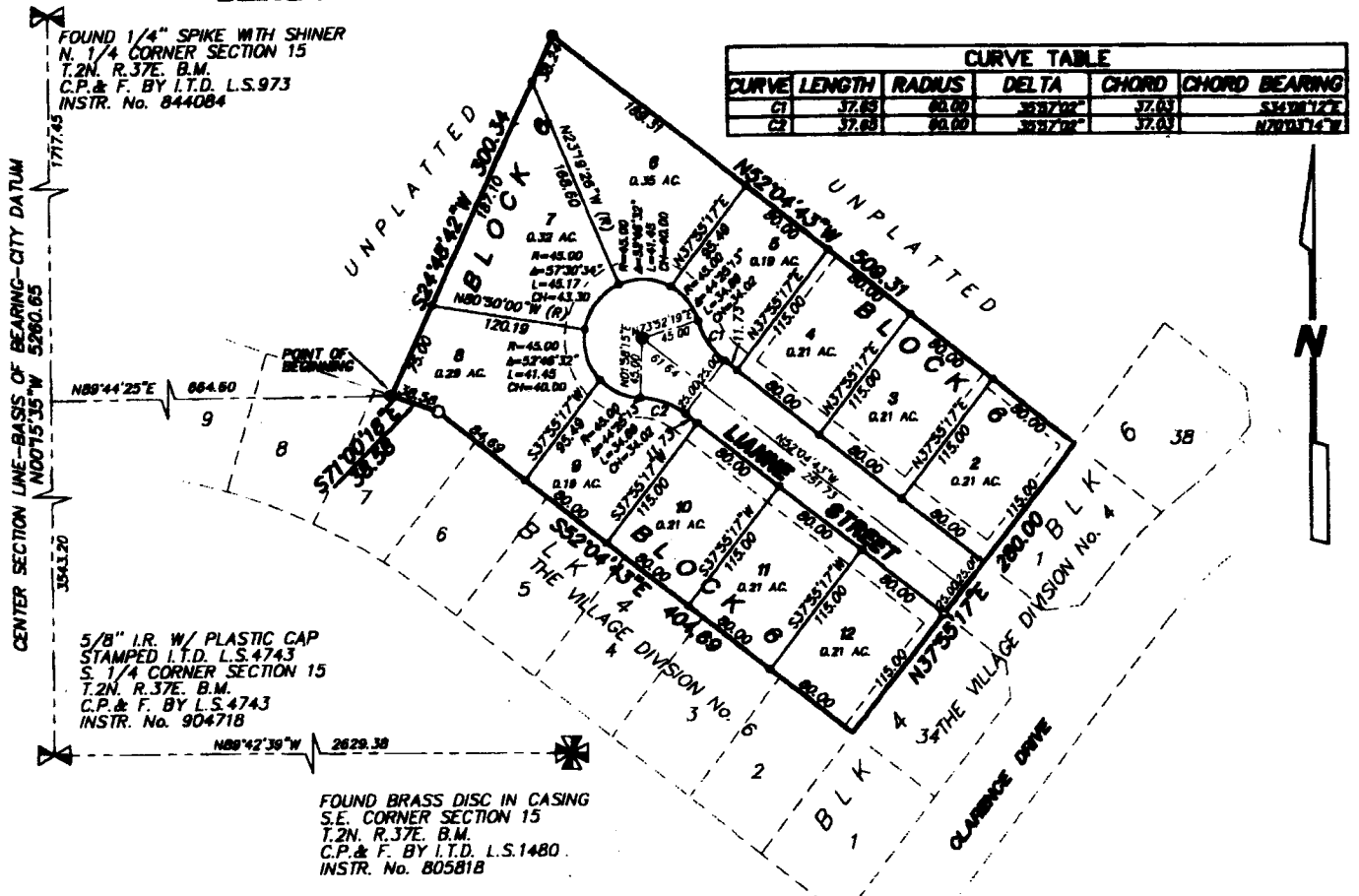


The Village

DIVISION NO. 8 AN ADDITION TO THE CITY OF IDAHO FALLS BONNEVILLE COUNTY, IDAHO BEING A PART OF THE NE 1/4 OF SECTION 15 T.2N. R.37E. B.M.



LEGEND & NOTES

- 5/8" x 30" Steel Re-bar set with plastic cap stamped L.S. 8795
- 1/2" x 24" Steel Re-bar set with plastic cap stamped L.S. 8795
- 5/8" Steel Re-bar found with caps stamped L.S. 8795
- 1/2" Steel Re-bar found with caps stamped L.S. 8795

A fifteen foot wide Utility Easement is hereby granted along all road frontages within each lot. All other utility easements are eight feet wide unless otherwise noted.

First American Title Company
Idaho Falls, Idaho 83404
While this is a photographic reproduction of the recorded plat, the Company assumes no liability for variations, if any, with a re-survey.