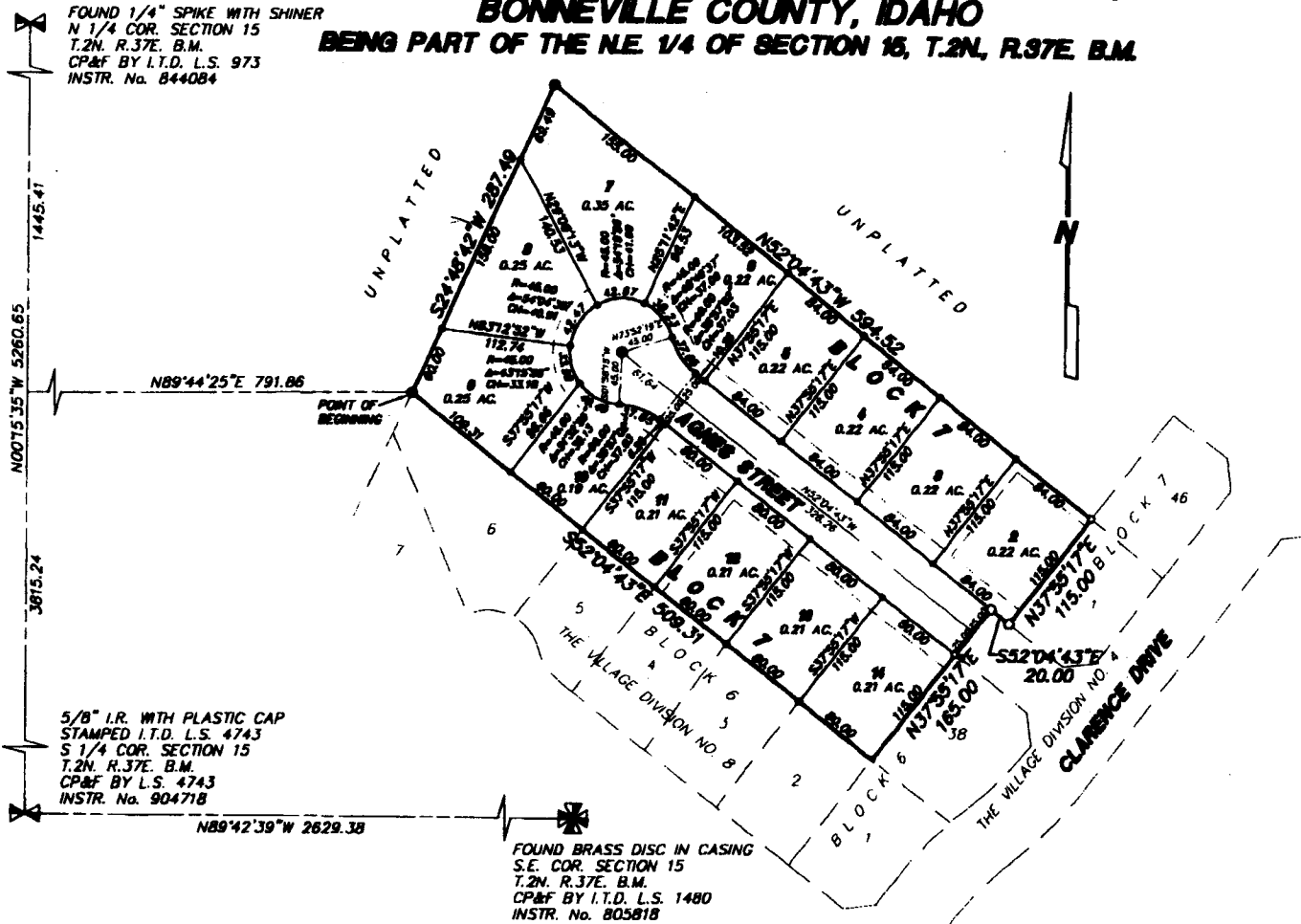


The Village

DIVISION NO. 9 AN ADDITION TO THE CITY OF IDAHO FALLS, BONNEVILLE COUNTY, IDAHO BEING PART OF THE NE 1/4 OF SECTION 15, T.2N, R.37E. B.M.



First American Title Company
Idaho Falls, Idaho 83404

While this is a photographic reproduction of the recorded plat, the Company assumes no liability for variations, if any, with a re-survey.

LEGEND & NOTES

- 5/8" x 30" Steel Re-bar set with plastic cap stamped L.S. 8795
- 1/2" x 24" Steel Re-bar set with plastic cap stamped L.S. 8795
- 5/8" Steel Re-bar found with caps stamped L.S. 8795
- 1/2" Steel Re-bar found with caps stamped L.S. 8795

A fifteen foot wide Utility Easement is hereby granted along all road frontages within each lot. All other utility easements are eight foot wide unless otherwise noted.