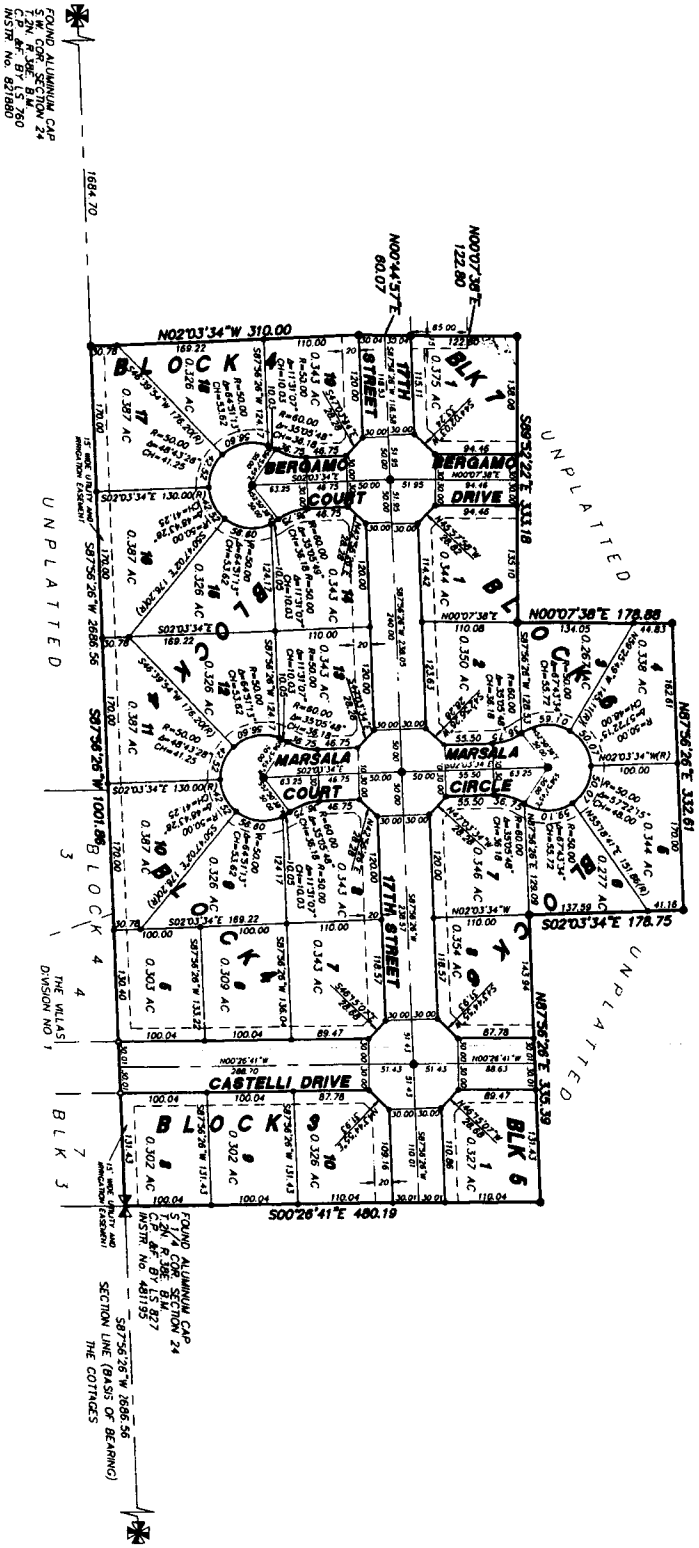


THE VILLAS

DIVISION NO. 2

AN ADDITION TO THE CITY OF AMMON, BONNEVILLE COUNTY, IDAHO

BENG PART OF THE SOUTH 1/2 OF SECTION 24 T29N R39E B1M



LEGEND & NOTES

- 5/8" x 3/8" Show stake set with plastic cap stamped L.S. 8795
 - 1/2" x 24" Show stake set with plastic cap stamped L.S. 8795
 - 1/2" x 24" Show stake set with plastic cap stamped L.S. 8795
- A ribbon line with Public Utility Easement is hereby guaranteed along all road frontages when each lot is shown with a public utility easement as shown by the dashed line.
- The dashed line contains 30 feet (0.33) foot average 64 feet.

Plattees shall have the right to install, maintain, and operate their equipment above and below ground and all other related matters within the Public Utility Easement (P.U.E.) indicated on this plat map as may be necessary or desirable in providing utility services within and without the lots contained herein, including the right of access to such facilities and the right to require removal of any obstructions or other structures which may interfere with the P.U.E. at the lot owner's expense. The plattees shall also have the right to install, maintain, and operate all lines of power, gas, water, and other utility services within the P.U.E. at the lot owner's expense. At no time may any permanent structures be placed within the P.U.E. or any other structure which interferes with the use of the P.U.E. without the prior written approval of the plattees with locations in the P.U.E.

Special flood hazard areas indicated by 100-year flood zone - Zone AE
 Base flood elevation line Elevation of feet NAD 1983

FOUND ALUMINUM CAP
 5/8" x 3/8" SECTION 24
 C.P. BY L.S. 760
 INSTR. NO. 821980

FOUND ALUMINUM CAP
 5/8" x 3/8" SECTION 24
 C.P. BY L.S. 877
 INSTR. NO. 48195

SECTION LINE (BASIS OF BERGAMO)
 THE COTTAGES