

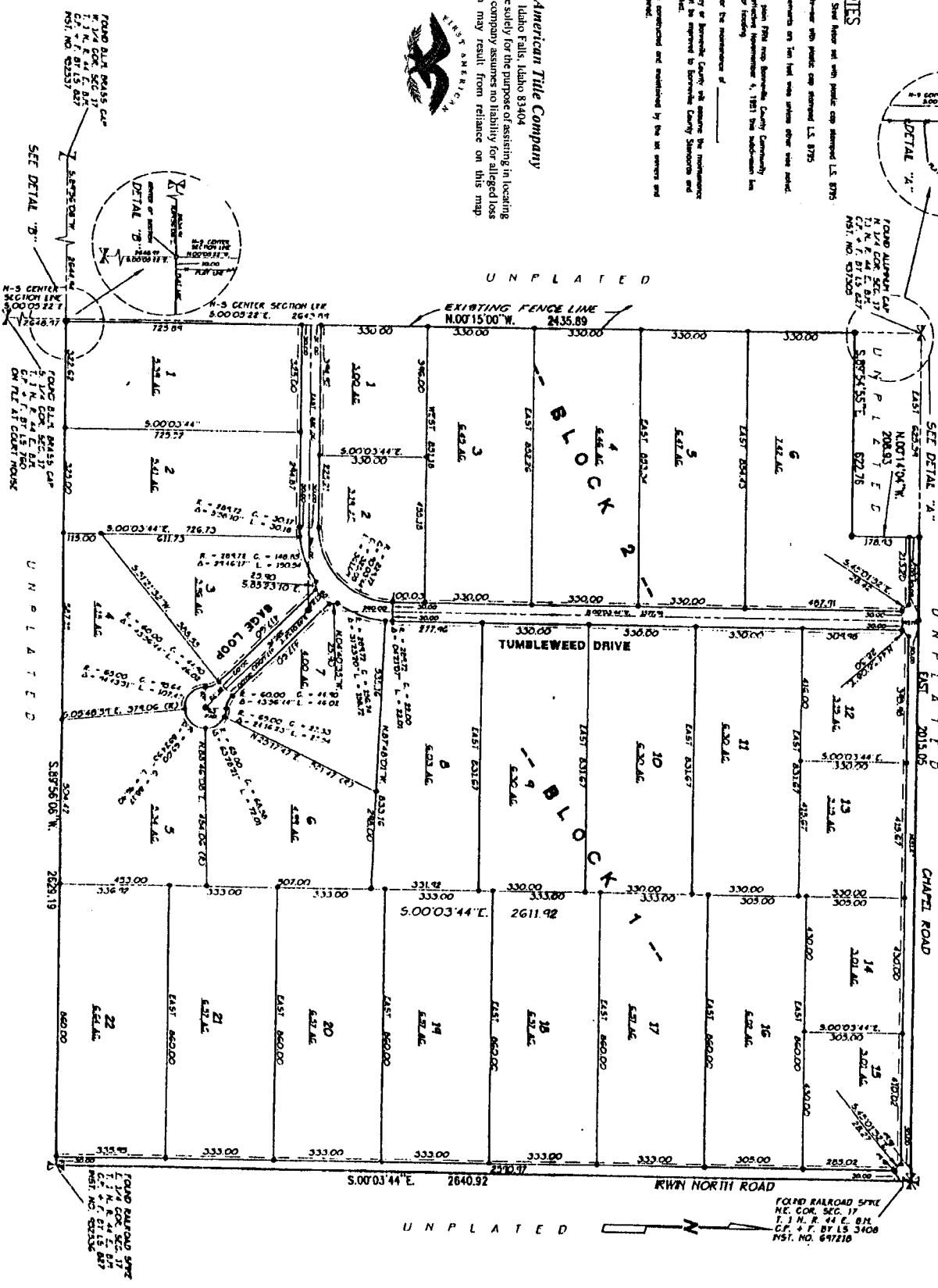
**WAGON WHEEL RANCH DIVISION NO. 1**  
**AN ADDITION TO THE CITY OF SWAN VALLEY,**  
**BONNEVILLE COUNTY, IDAHO**  
**PART OF THE NE 1/4 OF SECTION 17 T. 1 N., R. 44 E., B.M.**

**LEGEND & NOTES**

● 5/8" x 30" Steel Hanger with plastic cap approved L.S. 8785  
 ● 1/2" Steel Hanger with plastic cap approved L.S. 8785  
 ● Utility Easements on lot lines shall show other side noted.  
 According to the FEMA Flood plain FIRM map Bonneville County Community Flood No. 100277-0310-C effective November 4, 1981 the subdivision is in Zone "X" area of moderate flooding.  
 Lot Owners are responsible for the maintenance of \_\_\_\_\_  
 Before the City of Swan Valley or Bonneville County will assume the maintenance responsibility, said roads must be approved by Bonneville County Standards and officially opened and accepted.  
 Private easements are to be contracted and maintained by the lot owners and easement approval shall be retained.



**First American Title Company**  
 Idaho Falls, Idaho 83404  
 This sketch is made solely for the purpose of assisting in locating the premises. The company assumes no liability for alleged loss or damage which may result from reliance on this map.



UN PL A T E D

ROUND RAILROAD SPIKE  
 NE. COR. SEC. 17  
 T. 1 N., R. 44 E., B.M.  
 C.P. & P. BY 15 3408  
 P.S.T. NO. 647210