

WARM SPRING MEADOWS

DIVISION NO. 2

BONNEVILLE COUNTY, IDAHO

PART OF THE N.W. 1/4 OF SECTION 23, T. 2 N., R. 38 E.B.M.

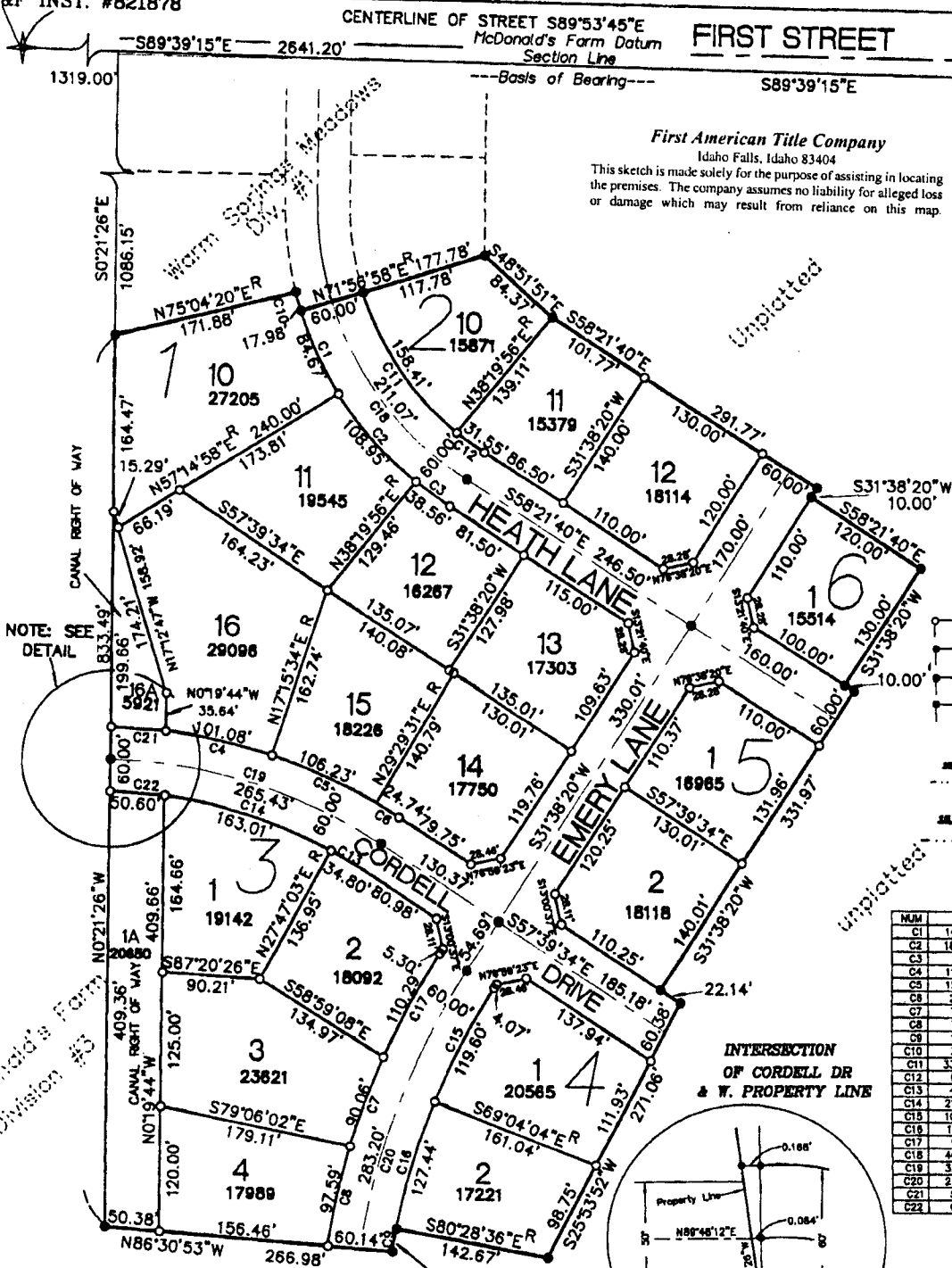
NW COR. SEC. 23,
T.2N., R.38E.B.M.
CP&F INST. #821878

CENTERLINE OF STREET S89°53'45"E
McDonald's Farm Datum
Section Line

FIRST STREET

First American Title Company
Idaho Falls, Idaho 83404

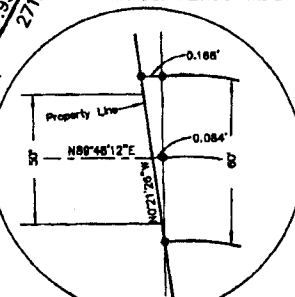
This sketch is made solely for the purpose of assisting in locating the premises. The company assumes no liability for alleged loss or damage which may result from reliance on this map.



NOTES

- Indicates a 1/2" x 24" iron rod placed with a yellow plastic cap marked L.S. 722.
- Indicates a 1/2" x 24" iron rod found with a yellow plastic cap marked L.S. 722.
- Indicates a 5/8" x 30" iron rod placed with a yellow plastic cap marked L.S. 722.
- Indicates a 5/8" x 30" iron rod found with a yellow plastic cap marked L.S. 722.
- a 10' wide utility easement is reserved along the street side of all lots.
- Indicates lot area in square feet.
- easements 10' wide unless otherwise indicated on plat.
- Bonneville County will not maintain roads until constructed to county standards and officially accepted. Private driveways will be constructed at owner's expense. The approved improvement drawings and drainage swales shall be maintained by owner of each lot.

NUM	DELTA	ARC	RADIUS	BEARING	DISTANCE
C1	14°41'58"	84.87	330.00	S25°24'01"E	84.43
C2	18°54'57"	108.95	330.00	S42°12'30"E	108.45
C3	8°41'41"	38.58	330.00	S55°00'48"E	38.54
C4	11°38'24"	101.08	497.58	N78°33'38"W	100.91
C5	12°13'58"	108.23	497.58	N68°37'28"W	108.03
C6	2°50'55"	24.74	497.58	N56°05'02"W	24.73
C7	7°22'18"	90.08	700.00	S18°55'33"W	90.00
C8	7°58'17"	97.59	700.00	S11°14'45"W	97.51
C9	1°55'03"	21.42	840.00	S8°33'52"W	21.42
C10	3°07'17"	17.98	330.00	S16°29'23"E	17.98
C11	33°38'53"	158.41	270.00	S34°51'59"E	158.18
C12	8°41'42"	31.53	270.00	S55°00'48"E	31.53
C13	4°33'23"	34.80	437.58	N59°56'18"W	34.79
C14	21°20'43"	163.01	437.58	N72°33'19"W	162.07
C15	10°42'24"	119.80	640.00	S28°17'06"W	119.42
C16	11°24'31"	127.44	640.00	S19°13'40"W	127.23
C17	8°01'38"	110.29	700.00	S27°07'31"W	110.18
C18	40°18'38"	211.07	300.00	S38°12'21"E	208.74
C19	32°31'36"	285.43	487.58	N73°59'22"W	281.88
C20	24°13'05"	283.20	870.00	S19°31'47"W	281.10
C21	3°48'23"	50.42	487.58	N87°17'02"W	50.40
C22	8°37'30"	50.80	437.58	N88°52'24"W	50.57



INTERSECTION
OF CORDELL DR
& W. PROPERTY LINE

Unplotted

Unplotted

Unplotted

McDonald's Farm
Division #5

1319.00'

S89°39'15"E 2641.20'

S89°39'15"E 1322.20'

1086.15'

S0°21'26"E

164.47'

15.29'

66.19'

833.49'

199.86'

174.21'

162.74'

60.00'

60.00'

60.60'

60.00'

60.00'

60.00'

60.00'

60.00'

60.00'

60.00'

60.00'

60.00'

60.00'

60.00'

60.00'

60.00'

60.00'