

WARM SPRING MEADOWS

SUBDIVISION, DIVISION NO. 5
 BONNEVILLE COUNTY, DAHO
 PART OF THE NW 1/4 OF SECTION 23 T. 2 N. R. 38 E. 30

NW COR. SEC. 23,
 T. 2N., R. 38E. 30 E.M.
 GRAF INST. #621878

CORNER OF STREET 588.61'
 1/4 SECTION 23, T. 2 N., R. 38 E. 30 E.M.
 SECTION LINE
 2082.56'

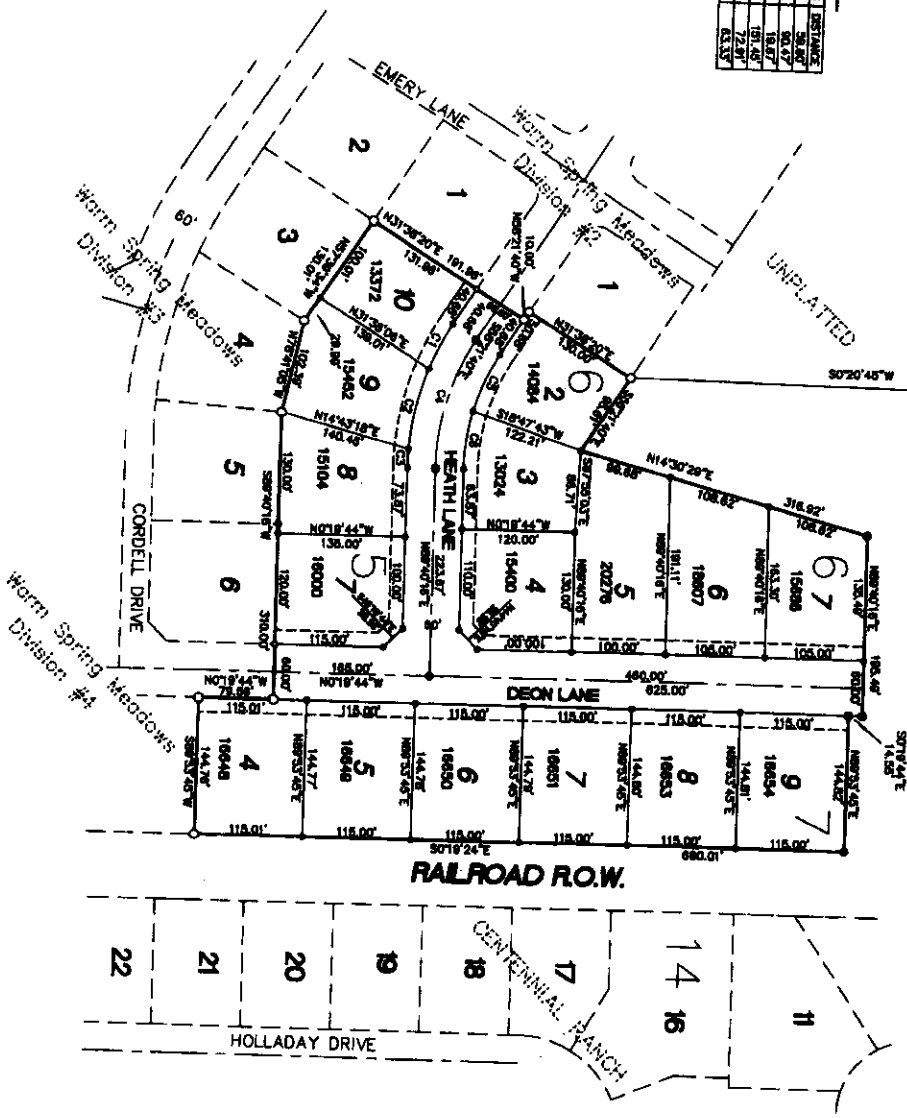
NORTH 1/4 COR. SEC. 23,
 T. 2N., R. 38E. 30 E.M.
 GRAF INST. #662630

First American Title Company
 Idaho Falls, Id 83404
 While this is a photographic
 reproduction of the recorded
 plat, the company assumes
 no liability for variations,
 if any, with a re-survey.



CURVE TABLE

CHAIN	DELTA	ARC	RADIUS	BEARING	CHORD	PERCENTAGE
C1	117.700'	56.00'	325.00'	S 82° 28' 00" E	56.00'	100%
C2	170.000'	90.00'	300.00'	S 89° 58' 00" E	90.00'	100%
C3	281.437'	148.87'	300.00'	S 89° 58' 00" E	148.87'	100%
C4	312.800'	164.43'	300.00'	S 89° 58' 00" E	164.43'	100%
C5	178.000'	90.00'	300.00'	S 89° 58' 00" E	90.00'	100%
C6	143.111'	72.18'	240.00'	S 82° 28' 00" E	72.18'	100%



NOTES

- indicates a 1 1/2" x 2 1/4" iron rod placed with a yellow plastic cap marked L.S. 722.
- indicates a 1 1/2" x 2 1/4" iron rod found.
- indicates a 3/8" x 3/8" iron rod placed with a yellow plastic cap marked L.S. 722.
- indicates a 3/8" x 3/8" iron rod found with a yellow plastic cap marked L.S. 722.
- indicates lot area in square feet.
- bearings (16' wide unless otherwise indicated on plat).