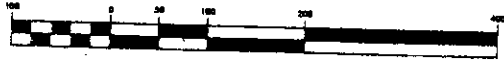


GRAPHIC SCALE



WATERFORD

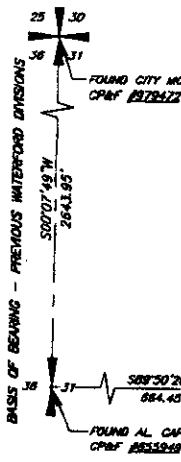
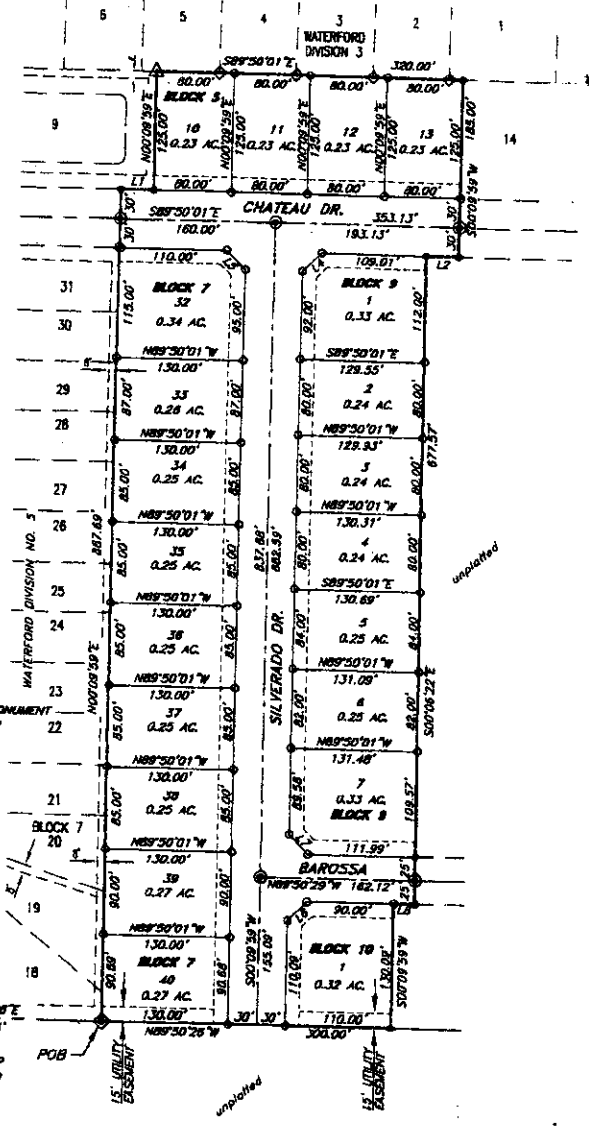
DIVISION NO. 6

AN ADDITION TO THE CITY OF IDAHO FALLS, BONNEVILLE COUNTY, IDAHO
PART OF THE NW 1/4 OF SECTION 31, T. 2 N., R. 38 E., B.M.

First American Title Company
Idaho Falls, Idaho 83404
While this is a photographic reproduction of the recorded plat, the Company assumes no liability for variations, if any, with a re-survey.



LINE TABLE		
LINE	LENGTH	BEARING
L1	33.33	S89°50'01"E
L2	34.32	N89°50'01"W
L4	28.29	S43°09'59"W
L6	28.28	S44°50'01"E
L7	28.29	S45°09'43"W
L8	22.25	N89°50'29"E



LEGEND

- Section control corners
- Placed 5/8"x30" iron rod with cap marked P.L.S. 4563
- Placed 1/2"x24" iron rod with cap marked P.L.S. 4563
- Found 5/8"x30" iron rod with cap marked P.L.S. 4563
- Found 1/2"x24" iron rod with cap marked P.L.S. 4563
- Utility easements are 15' wide along the street frontage of all lots. All other easement widths are as shown.
- Monument to be placed after construction.
- POB Point of Beginning
- Found 1/2"x24" iron rod with cap marked P.L.S. 4998
- Found 5/8"x30" iron rod with cap marked P.L.S. 4998