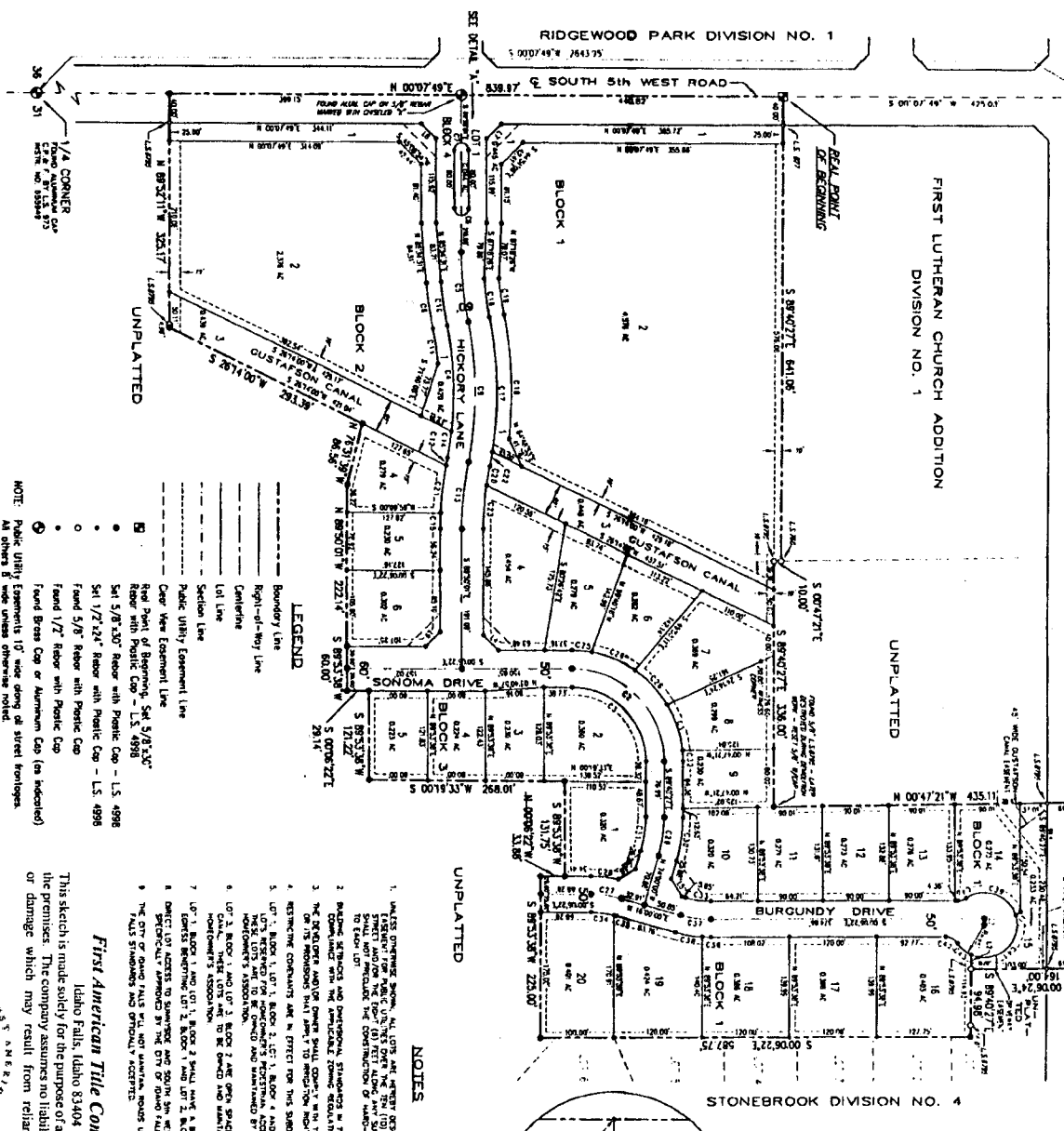


SECTION CORNER  
 T. 2N., R. 37E.  
 T. 2N., R. 36E.  
 1/4 CORNER  
 BEING A PORTION OF THE NW 1/4, SECTION 31, T. 2N., R. 36E., B.M.  
 1999

WATERFORD  
 DIVISION NO. 1  
 AN ADDITION TO THE CITY OF DAVID FALLS  
 BEING A PORTION OF THE NW 1/4, SECTION 31, T. 2N., R. 36E., B.M.  
 BOWENVILLE COUNTY, IDAHO  
 1999



**LEGEND**

- Boundary Line
- Right-of-Way Line
- Center Line
- Section Line
- Public Utility Easement Line
- Clear View Easement Line
- Right-of-Way Line
- Center Line
- Section Line
- Public Utility Easement Line
- Clear View Easement Line

**NOTES**

1. UNPLATTED AREAS ARE NOT RECORDED AS BEING A PRELIMINARY SUBDIVISION. THE CITY OF DAVID FALLS HAS THE RIGHT TO REVOKE THE SUBDIVISION RIGHTS AND REVENUE SHALL NOT PRECLUDE THE CONSTRUCTION OF UNIMPROVED DRIVEWAYS AND ALLEYS.
2. THE CITY OF DAVID FALLS HAS THE RIGHT TO REVOKE THE SUBDIVISION RIGHTS AND REVENUE SHALL NOT PRECLUDE THE CONSTRUCTION OF UNIMPROVED DRIVEWAYS AND ALLEYS.
3. THE CITY OF DAVID FALLS HAS THE RIGHT TO REVOKE THE SUBDIVISION RIGHTS AND REVENUE SHALL NOT PRECLUDE THE CONSTRUCTION OF UNIMPROVED DRIVEWAYS AND ALLEYS.
4. THE CITY OF DAVID FALLS HAS THE RIGHT TO REVOKE THE SUBDIVISION RIGHTS AND REVENUE SHALL NOT PRECLUDE THE CONSTRUCTION OF UNIMPROVED DRIVEWAYS AND ALLEYS.
5. THE CITY OF DAVID FALLS HAS THE RIGHT TO REVOKE THE SUBDIVISION RIGHTS AND REVENUE SHALL NOT PRECLUDE THE CONSTRUCTION OF UNIMPROVED DRIVEWAYS AND ALLEYS.
6. THE CITY OF DAVID FALLS HAS THE RIGHT TO REVOKE THE SUBDIVISION RIGHTS AND REVENUE SHALL NOT PRECLUDE THE CONSTRUCTION OF UNIMPROVED DRIVEWAYS AND ALLEYS.
7. THE CITY OF DAVID FALLS HAS THE RIGHT TO REVOKE THE SUBDIVISION RIGHTS AND REVENUE SHALL NOT PRECLUDE THE CONSTRUCTION OF UNIMPROVED DRIVEWAYS AND ALLEYS.
8. THE CITY OF DAVID FALLS HAS THE RIGHT TO REVOKE THE SUBDIVISION RIGHTS AND REVENUE SHALL NOT PRECLUDE THE CONSTRUCTION OF UNIMPROVED DRIVEWAYS AND ALLEYS.
9. THE CITY OF DAVID FALLS HAS THE RIGHT TO REVOKE THE SUBDIVISION RIGHTS AND REVENUE SHALL NOT PRECLUDE THE CONSTRUCTION OF UNIMPROVED DRIVEWAYS AND ALLEYS.

**LINE TABLE**

LINE NO.	BEARING	DISTANCE	AREA
1	N 00° 07' 49" E	111.11	12.34
2	S 89° 52' 11" W	111.11	12.34
3	N 00° 07' 49" E	111.11	12.34
4	S 89° 52' 11" W	111.11	12.34
5	N 00° 07' 49" E	111.11	12.34
6	S 89° 52' 11" W	111.11	12.34
7	N 00° 07' 49" E	111.11	12.34
8	S 89° 52' 11" W	111.11	12.34
9	N 00° 07' 49" E	111.11	12.34
10	S 89° 52' 11" W	111.11	12.34
11	N 00° 07' 49" E	111.11	12.34
12	S 89° 52' 11" W	111.11	12.34
13	N 00° 07' 49" E	111.11	12.34
14	S 89° 52' 11" W	111.11	12.34
15	N 00° 07' 49" E	111.11	12.34
16	S 89° 52' 11" W	111.11	12.34
17	N 00° 07' 49" E	111.11	12.34
18	S 89° 52' 11" W	111.11	12.34
19	N 00° 07' 49" E	111.11	12.34
20	S 89° 52' 11" W	111.11	12.34
21	N 00° 07' 49" E	111.11	12.34
22	S 89° 52' 11" W	111.11	12.34
23	N 00° 07' 49" E	111.11	12.34
24	S 89° 52' 11" W	111.11	12.34
25	N 00° 07' 49" E	111.11	12.34
26	S 89° 52' 11" W	111.11	12.34
27	N 00° 07' 49" E	111.11	12.34
28	S 89° 52' 11" W	111.11	12.34
29	N 00° 07' 49" E	111.11	12.34
30	S 89° 52' 11" W	111.11	12.34
31	N 00° 07' 49" E	111.11	12.34



**First American Title Company**  
 Idaho Falls, Idaho 83404

This sketch is made solely for the purpose of assisting in locating the premises. The company assumes no liability for alleged loss or damage which may result from reliance on this map.