

WATKINS ADDITION DIVISION NO. 1

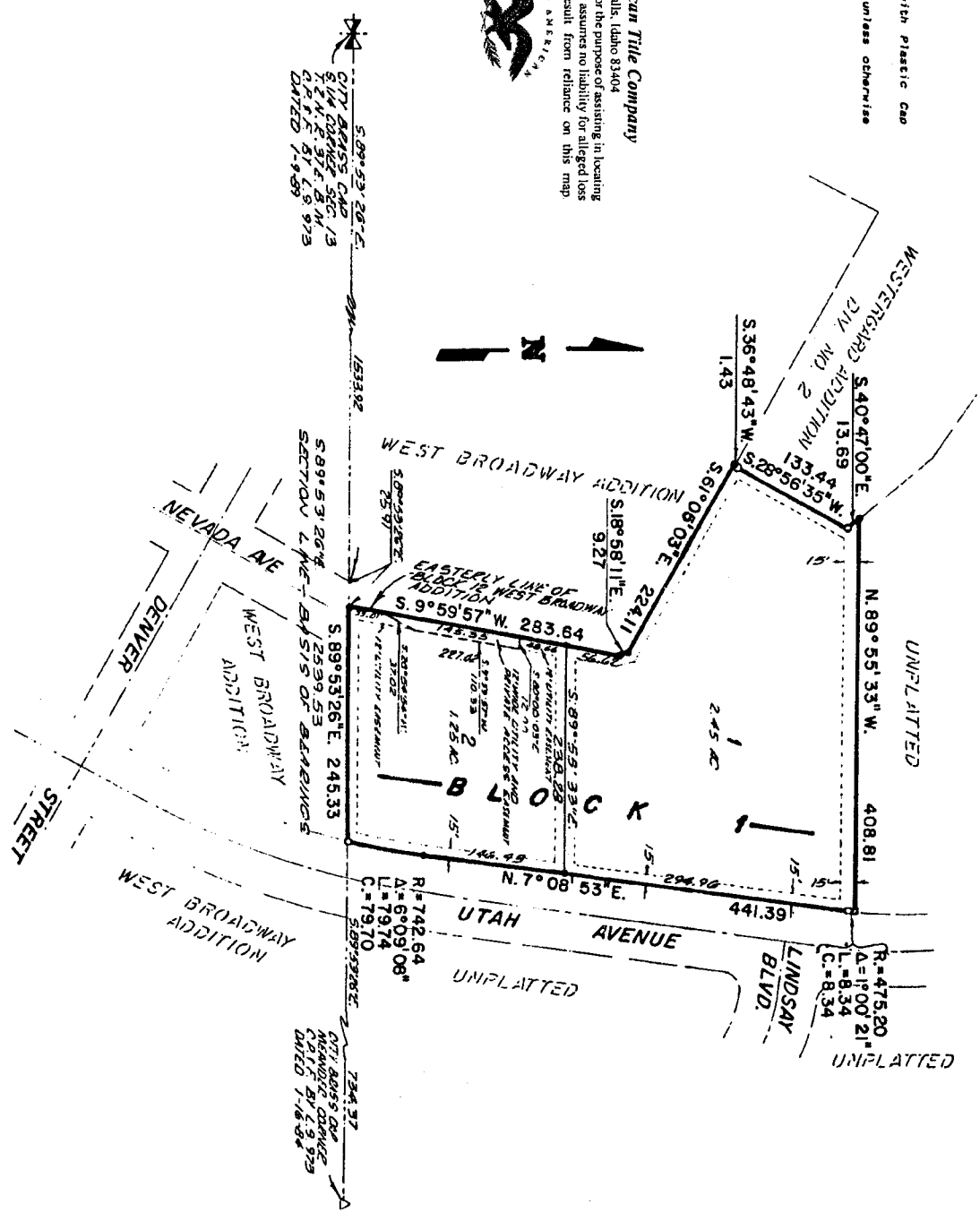
BEING PART OF LOT 4, SECTION 13, T. 2 N., R. 37 E., B.M. WHICH INCLUDES A REPLAT OF
A PART OF BLOCK 12, WEST BROADWAY ADDITION TO THE CITY OF IDAHO FALLS, IDAHO

NOTES

- Denotes 1/2"x2 1/2" steel re-bar set with plastic cap
- Standard L.S. 827
- - - Utility easements are ten feet wide unless otherwise noted.
- CHISELED X IN SIDEWALK
- ALUMINUM CAP

This sketch is made solely for the purpose of assisting in locating the premises. The company assumes no liability for alleged loss or damage which may result from reliance on this map.

First American Title Company
Idaho Falls, Idaho 83404



CITY 84155 CAD
S. 14.02° 22' 52" E. 13
72.4' E. 91.8' W
DATED 1-9-89

WEST BROADWAY ADDITION
SECTION 12 BY S. 15' OF BENCHMARKS
S. 89° 53' 26" E. 245.33

CITY 84155 CAD
S. 14.02° 22' 52" E. 13
72.4' E. 91.8' W
DATED 1-9-89

R=742.64
A=6°09'08"
L=79.74
C=79.70

R=475.20
A=1°00'21"
L=8.34
C=8.34