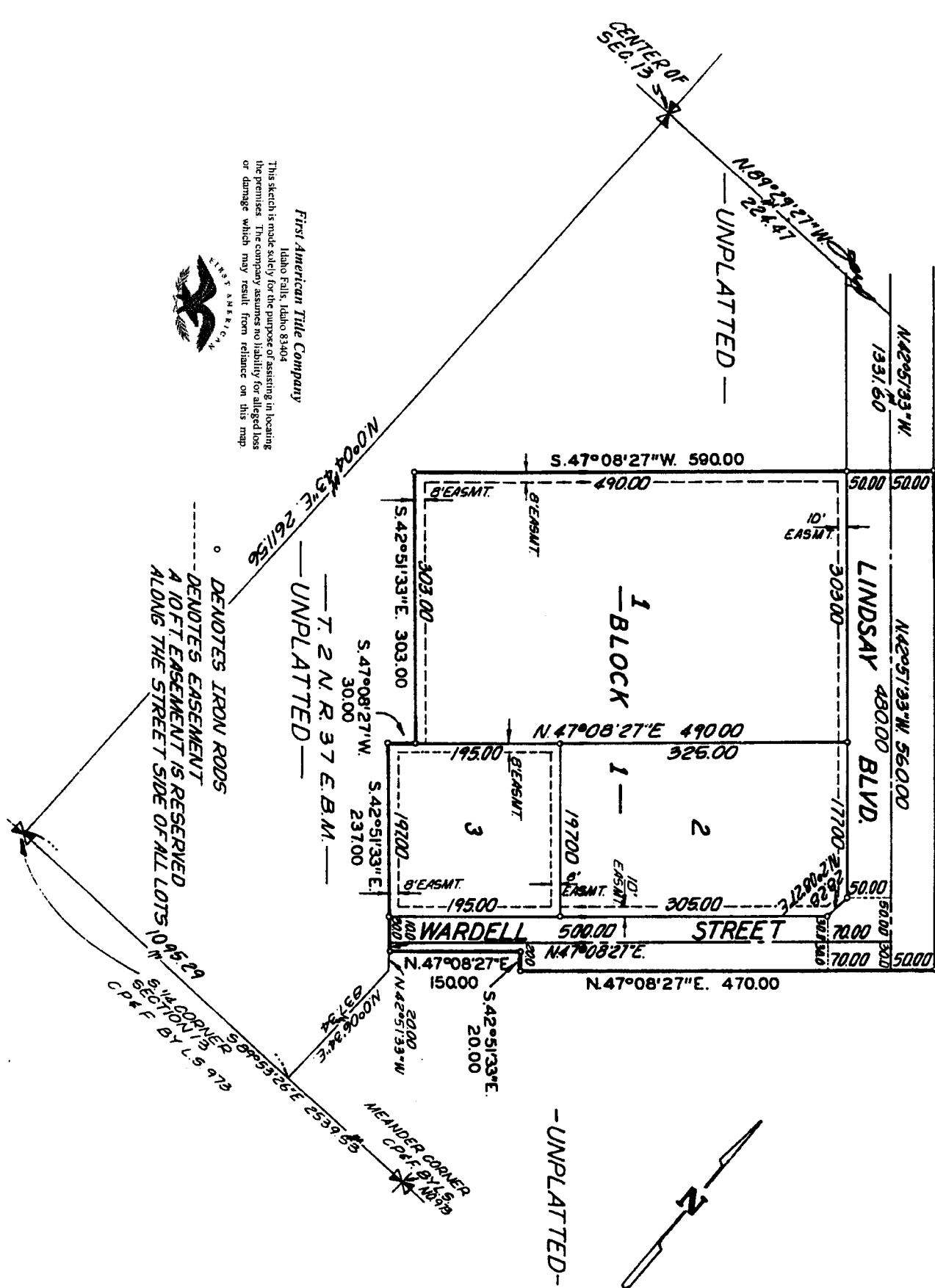


WESTERGARD ADDITION DIVISION NO. 1

TO THE CITY OF IDAHO FALLS, BONNEVILLE COUNTY, IDAHO
 A PORTION OF THE SOUTHEAST 1/4 OF SEC. 13 T. 2 N. R. 37 E. B.M.

SHILO INN SUBDIVISION
 N. 42° 51' 33" W. 560.00



First American Title Company
 Idaho Falls, Idaho 83404
 This sketch is made solely for the purpose of assisting in locating the premises. The company assumes no liability for alleged loss or damage which may result from reliance on this map.



○ DENOTES IRON RODS
 ○ DENOTES EASEMENT
 ○ A 10 FT. EASEMENT IS RESERVED
 ○ ALONG THE STREET SIDE OF ALL LOTS

MEANDER CORNER
 C.P. & F. BY L.S. 973
 S. 68° 55' 26" E. 255.97
 S. 1/4 CORNER
 SECTION 13
 C.P. & F. BY L.S. 973
 S. 10° 45' 29" W. 109.95