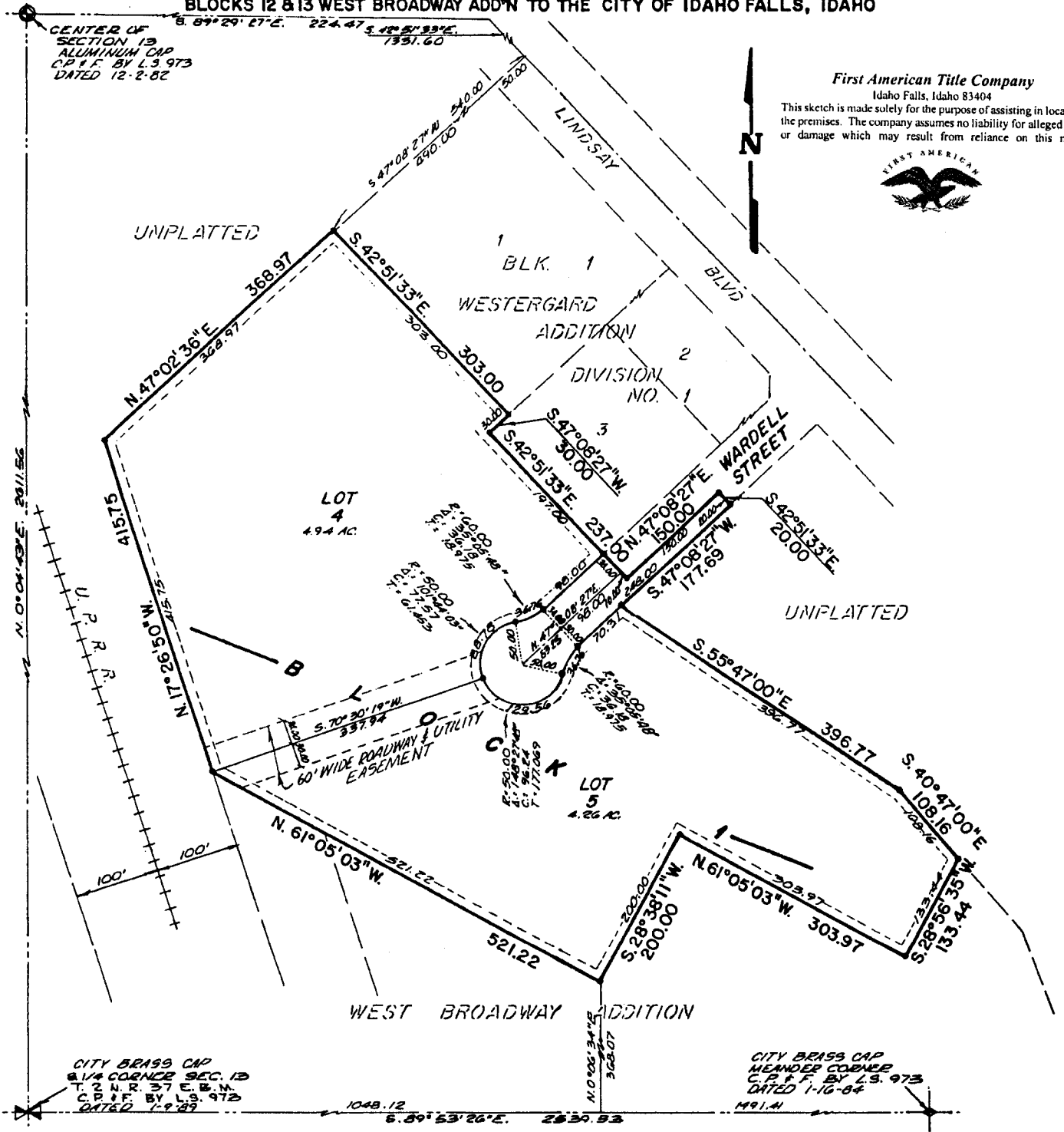


# WESTERGARD ADDITION DIVISION NO. 2

TO THE CITY OF IDAHO FALLS, BONNEVILLE COUNTY, IDAHO

BEING PART OF THE S.W. 1/4 S.E. 1/4 SEC. 13 T. 2 N. R. 37 E. B.M. AND A REPLAT OF PART OF BLOCKS 12 & 13 WEST BROADWAY ADD'N TO THE CITY OF IDAHO FALLS, IDAHO



First American Title Company  
Idaho Falls, Idaho 83404

This sketch is made solely for the purpose of assisting in locating the premises. The company assumes no liability for alleged loss or damage which may result from reliance on this map.



CENTER OF SECTION 13 ALUMINUM CAP C.P. & F. BY L.S. 973 DATED 12-2-82

CITY BRASS CAP S.W. 1/4 CORNER SEC. 13 T. 2 N. R. 37 E. B.M. C.P. & F. BY L.S. 973 DATED 1-9-82

CITY BRASS CAP MEANDER CORNER C.P. & F. BY L.S. 973 DATED 1-16-84

### NOTES

- 1/2" x 24" STEEL RE-BAR WITH PLASTIC CAP STAMPED L.S. 827
- UTILITY EASEMENT ARE (10) TEN FEET WIDE UNLESS OTHERWISE NOTED