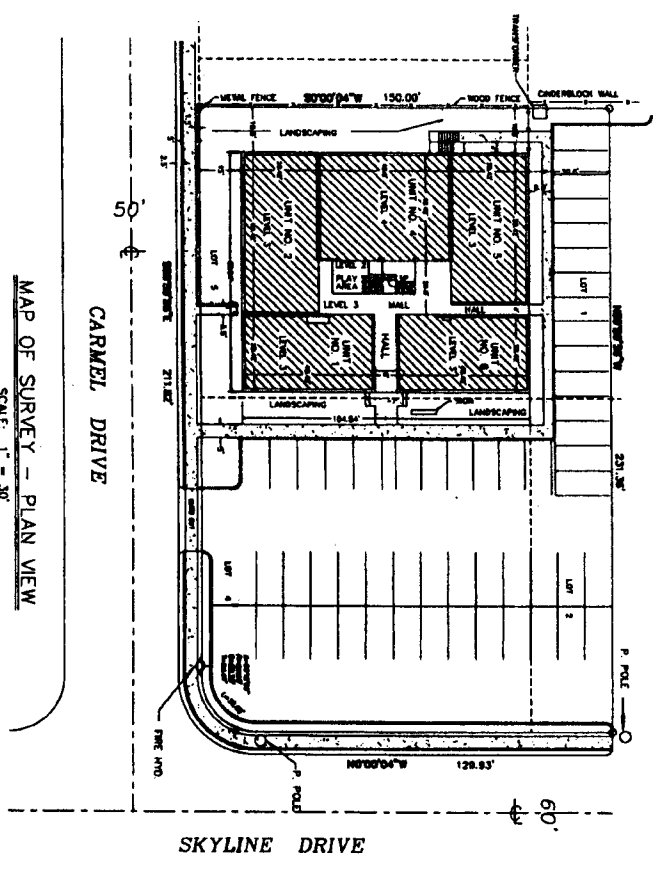
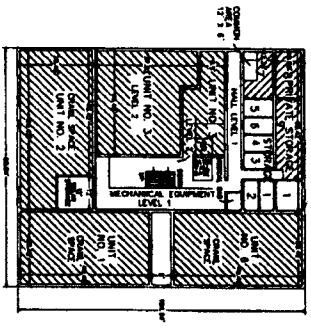


**EXHIBIT 'A' TO
 AMENDMENT AND RESTATEMENT OF
 THE DECLARATION OF CONDOMINIUM OF
 THE WESTFIELD HEALTH SERVICES CENTER CONDOMINIUM**

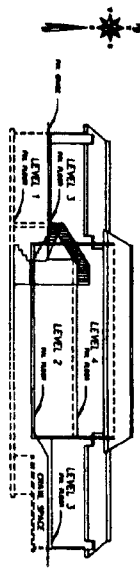
AN IDAHO CONDOMINIUM PROJECT
 PART OF THE N.E. 1/4 SECTION 23, T. 5N., R. 37 E. 1M.
 TO THE CITY OF IDAHO FALLS, IDAHO



MAP OF SURVEY - PLAN VIEW
 SCALE: 1" = 30'



PLAN VIEW



WEST ELEVATION

- FINISHED FLOOR ELEVATION LEVEL 1 = 4727.66'
- FINISHED FLOOR ELEVATION LEVEL 2 = 4731.36'
- FINISHED FLOOR ELEVATION LEVEL 3 = 4735.35'
- FINISHED FLOOR ELEVATION LEVEL 4 = 4741.08'

LEGEND

- 1. [Hatched pattern] CROSS HATCHING INDICATES SEPARATE OWNERSHIP
- 2. [Solid black] CONCRETE PAVING
- 3. [Dotted pattern] ASPHALT PAVING
- 4. [White box] ALL AREAS NOT HATCHED OR INDICATED BY A NUMBER ARE COMMON AREAS WHICH COMPRISE THE REMAINDER OF THE PROJECT
- 5. [Dashed line] FENCES
- 6. [Circle with dot] UNIT NO. 1 SEPARATE NUMBERS
- 7. [Circle with dot] INDICATES ROOF ROADS PLACED PRIOR TO RECORDING ORIGINAL PLAN (INST. NO. 867491)

First American Tile Company
 Idaho Falls, Idaho 83404
 This sketch is made solely for the purpose of assisting in locating the premises. The company assumes no liability for alleged loss or damage which may result from reliance on this map.

