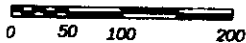
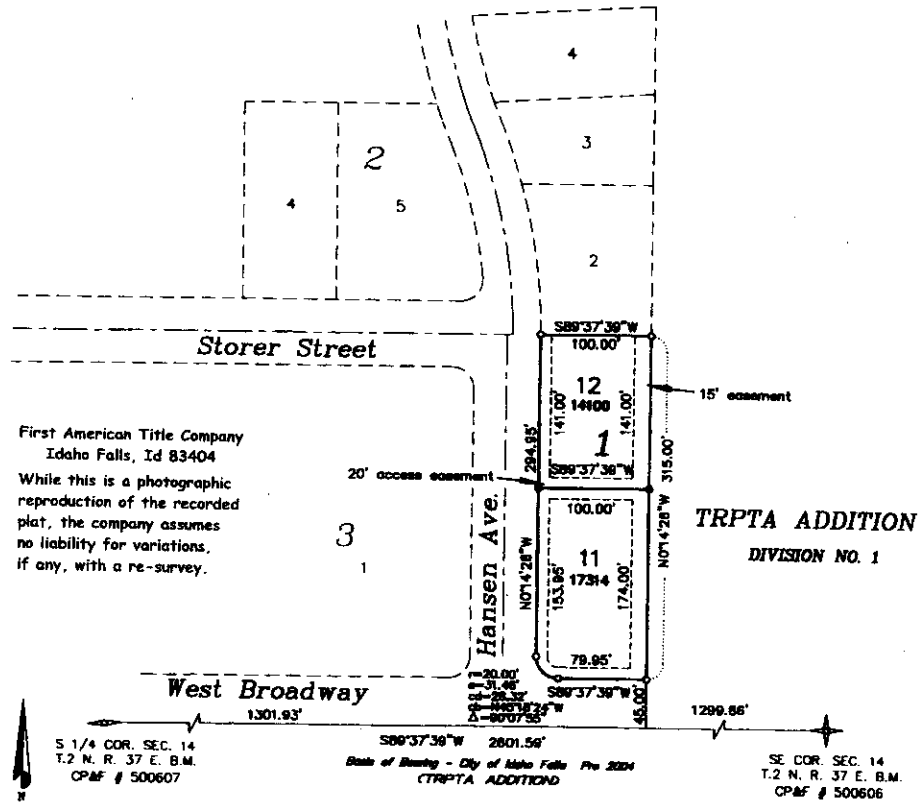


FIRST AMENDED PLAT OF WESTGATE ADDITION DIVISION NO. 1 CITY OF IDAHO FALLS, BONNEVILLE COUNTY, IDAHO

Being a replat of Lot 1, Block 1.
PART OF THE SOUTHEAST 1/4 OF SECTION 14, T. 2 N., R. 37 E.B.M.



NOTES

- indicates a 1/2" x 24" iron rod placed with a yellow plastic cap marked L.S. 722.
- indicates a 1/2" x 24" iron rod found with no cap.
- indicates a 5/8" x 30" iron rod placed with a yellow plastic cap marked L.S. 722.
- indicates a 5/8" x 30" iron rod found with no cap.
- 13000 indicates lot area in square feet.
- a 20' wide access easement is reserved between lots 11 and 12, 10' into each lot.
- a 10' wide utility easement is reserved along the street side of all lots.