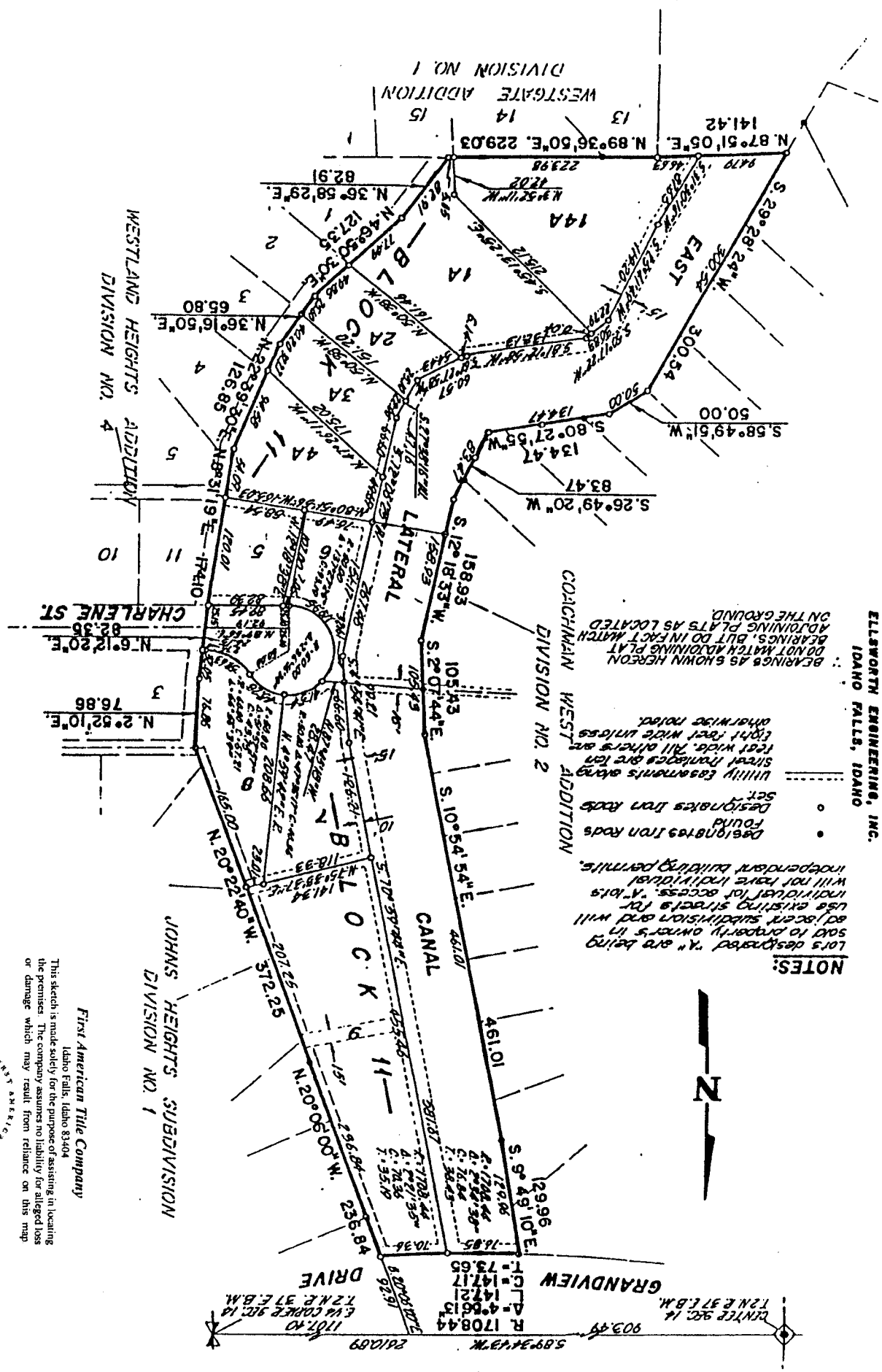


WESTLAND SUBDIVISION

TO THE CITY OF IDAHO FALLS, BONNEVILLE COUNTY, IDAHO
 A PORTION OF THE S.E. 1/4 OF SECTION 14 T. 2 N. R. 37 E. 8. M.

ELLSWORTH ENGINEERING, INC.
 IDAHO FALLS, IDAHO



NOTES:
 Lots designated "A" and being sold to property owners in adjacent subdivision and will use existing streets for individual access. "A" lots will not have individual independent building permits.
 Designated Iron Roads Found
 Designates Iron Roads
 Utility Easements along Street Fronts are for Right of Way. All other easements are for utility easements.
 Bearings as shown hereon do not match adjoining plat bearings, but do in fact match on the ground.
 DO NOT MATCH ADJOINING PLAT BEARINGS, BUT DO IN FACT MATCH ON THE GROUND.

First American Title Company
 Idaho Falls, Idaho 83404
 This sketch is made solely for the purpose of assisting in locating the premises. The company assumes no liability for alleged loss or damage which may result from reliance on this map.

