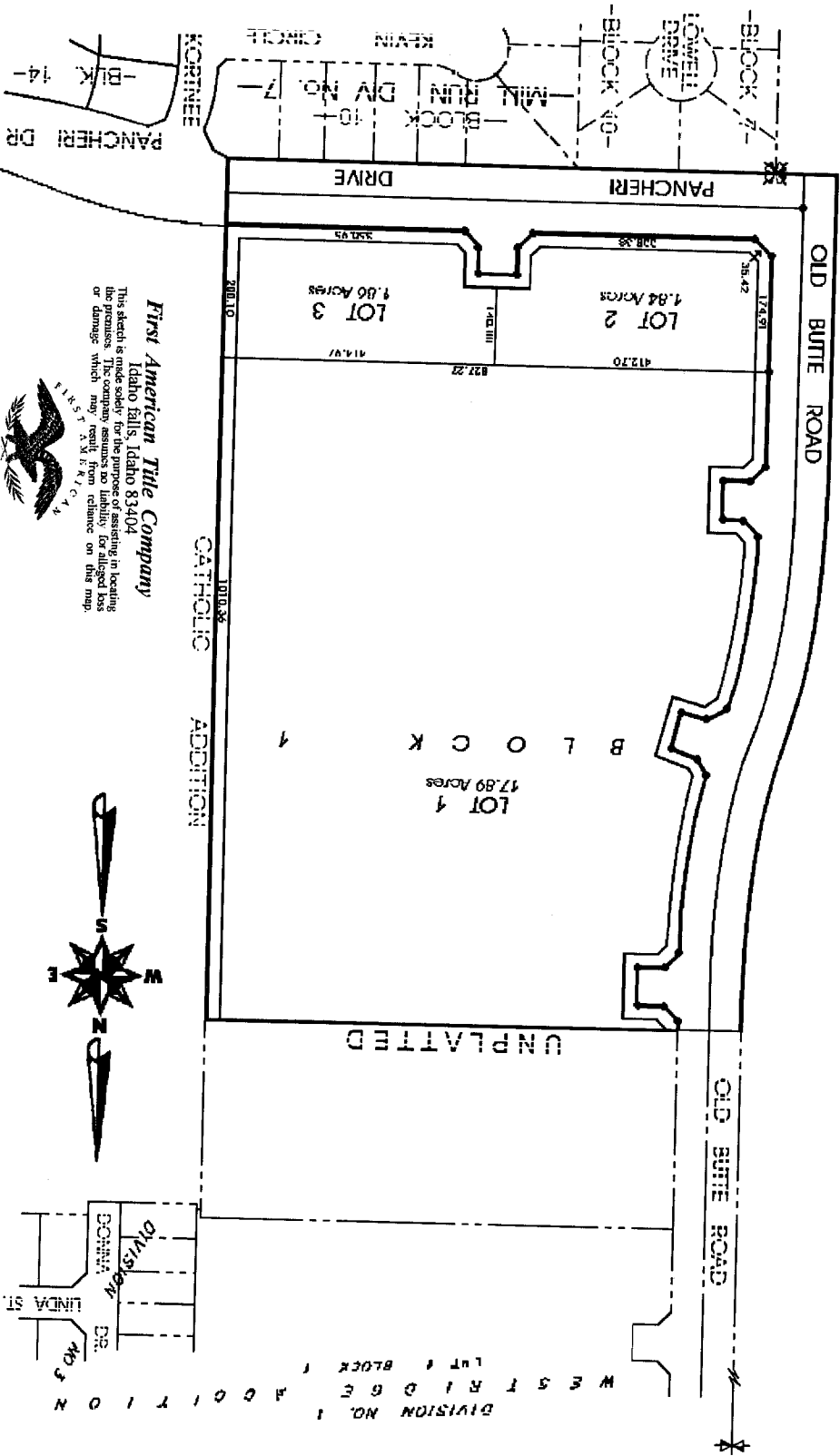


WESTRIDGE COMMERCIAL PLAZA DIVISION NO. 1

To the City of Idaho Falls, Bonneville County, Idaho
Being part of the N.E. ¼ of Section 22 T. 2 N., R. 37 E., D.M.



First American Title Company
 Idaho Falls, Idaho 83404
 This sketch is made solely for the purpose of showing in location the premises. The company assumes no liability for errors or omissions or damage which may result from reliance on this map.

