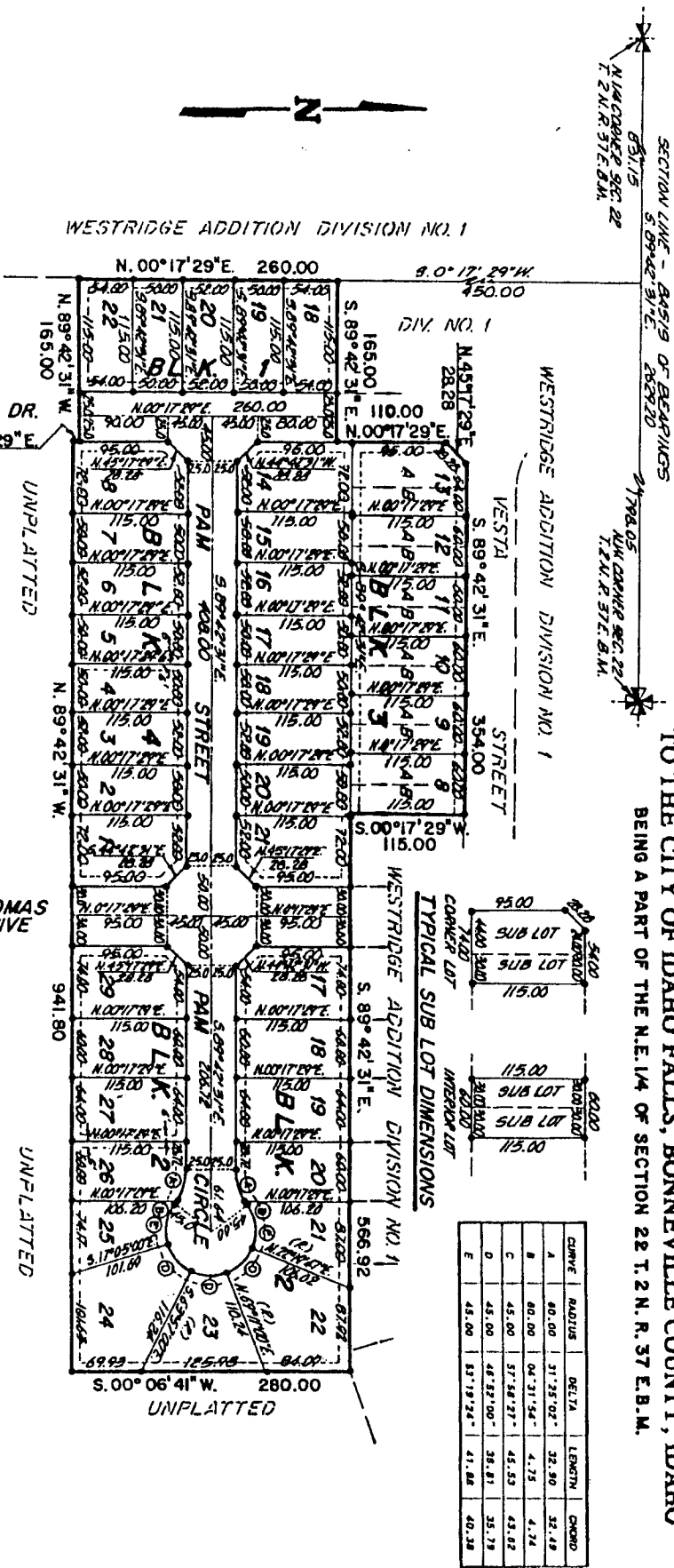


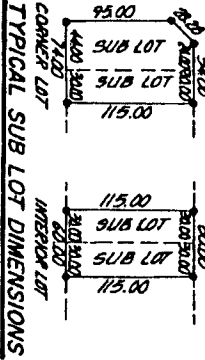
WESTRIDGE ADDITION

DIVISION NO 2

AND THE FIRST AMENDED PLAT OF LOTS 2 THRU 7, BLOCK 3,
WESTRIDGE ADDITION, DIVISION NO. 1,
TO THE CITY OF IDAHO FALLS, BONNEVILLE COUNTY, IDAHO
BEING A PART OF THE N.E. 1/4 OF SECTION 22 T. 2 N. R. 37 E. B.M.



CURVE	RADIUS	DELTA	LENGTH	CHORD
A	80.00	31°25'02"	32.90	32.49
B	80.00	04°31'54"	4.75	4.74
C	45.00	57°58'27"	45.53	43.82
D	45.00	48°27'00"	38.81	35.79
E	45.00	83°19'24"	41.88	40.38



- NOTES**
- DENOTES /ROW ROADS
 - UTILITY EASEMENTS ARE 10 FEET WIDE
 - ALONG ALL STREET FRONTAGES, DRIVES
 - ARE 8 FEET WIDE UNLESS NOTED OTHERWISE.

First American Title Company
Idaho Falls, Idaho 83404



This sketch is made solely for the purpose of assisting in locating the premises. The company assumes no liability for alleged loss or damage which may result from reliance on this map.