

WESTRIDGE ADDITION DIVISION NO. 3

TO THE CITY OF IDAHO FALLS, BONNEVILLE COUNTY, IDAHO
BEING PART OF THE NE. 1/4 OF SECTION 22, T. 2 N., R. 37 E., B.M.

CITY BRASS CAP
N. 1/4 CORNER SEC. 22
T. 2 N. R. 37 E. B.M.
C.P. BY I.S. 0734
INSTR. NO. 804719

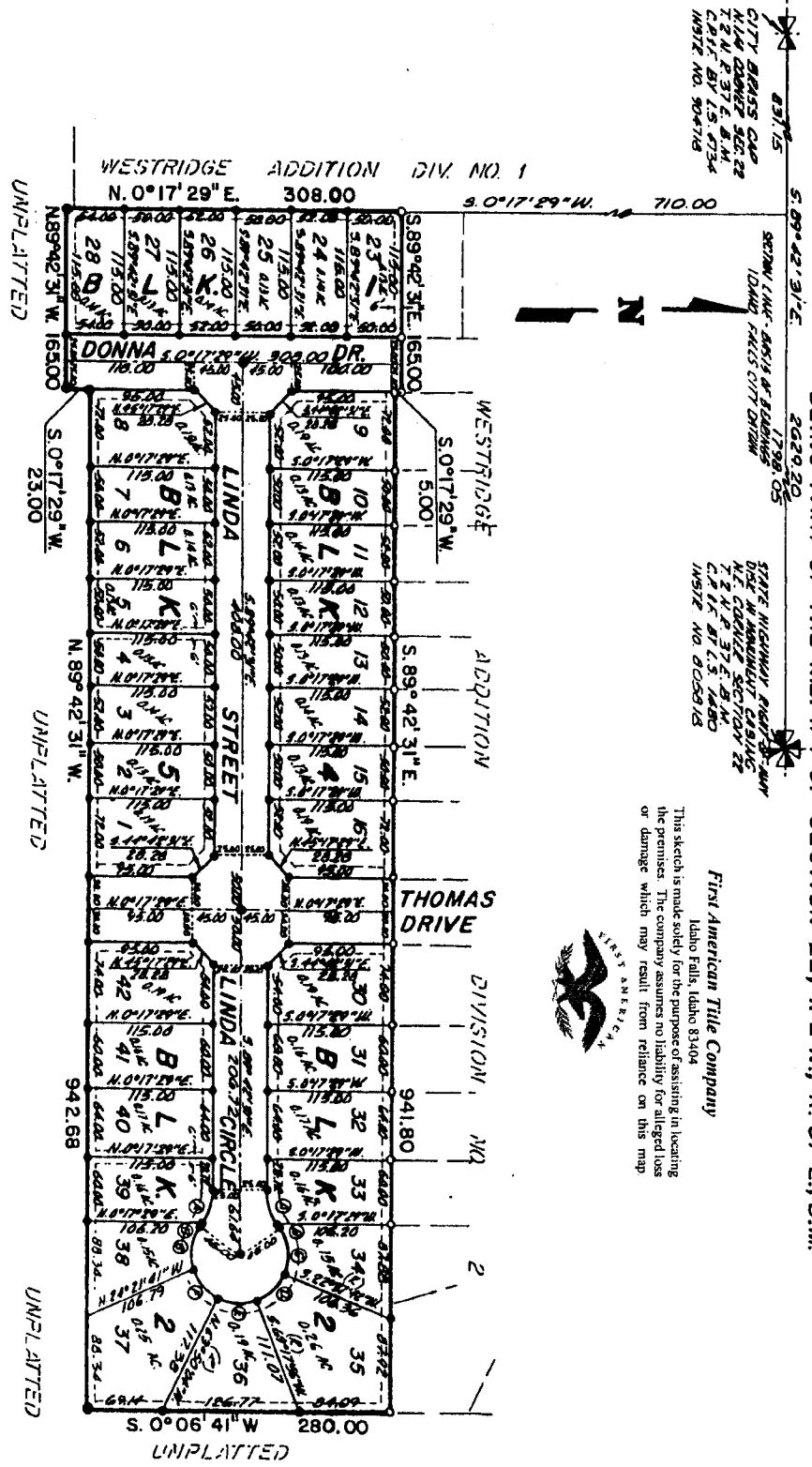
SECTION LINE - BRASS CAP
IDAHO FALLS CITY DRIVE
11.98.05

STATE HIGHWAY RIGHT-OF-WAY
DUE TO ADJACENT SECTIONS
N.E. CORNER SECTION 22
T. 2 N. R. 37 E. B.M.
C.P. BY I.S. 1480
INSTR. NO. 805818

This sketch is made solely for the purpose of assisting in locating the premises. The company assumes no liability for alleged loss or damage which may result from reliance on this map.



First American Title Company
Idaho Falls, Idaho 83404



LEGEND & NOTES

- 5/8" x 30" Steel Re-bar set with plastic cap stamped L.S. 8227
- 1/2" x 24" Steel Re-bar set with plastic cap stamped L.S. 8227
- Steel Re-bar found with caps stamped L.S. 827

--- 1/4 Inch wide Utility Easement is hereby granted along all road frontages within each lot.
All other easements are given their wide unless otherwise noted.

CURVE	RADIUS	DELTA	LENGTH	CHORD
A	60.00	31°25'35"	32.91	32.50
B	60.00	4°31'27"	4.74	4.74
C	45.00	58°17'15"	45.78	43.83
D	45.00	48°40'13"	38.65	35.65
E	45.00	48°52'00"	36.81	35.79
F	45.00	48°44'58"	36.72	35.71
G	45.00	53°19'37"	41.88	40.39