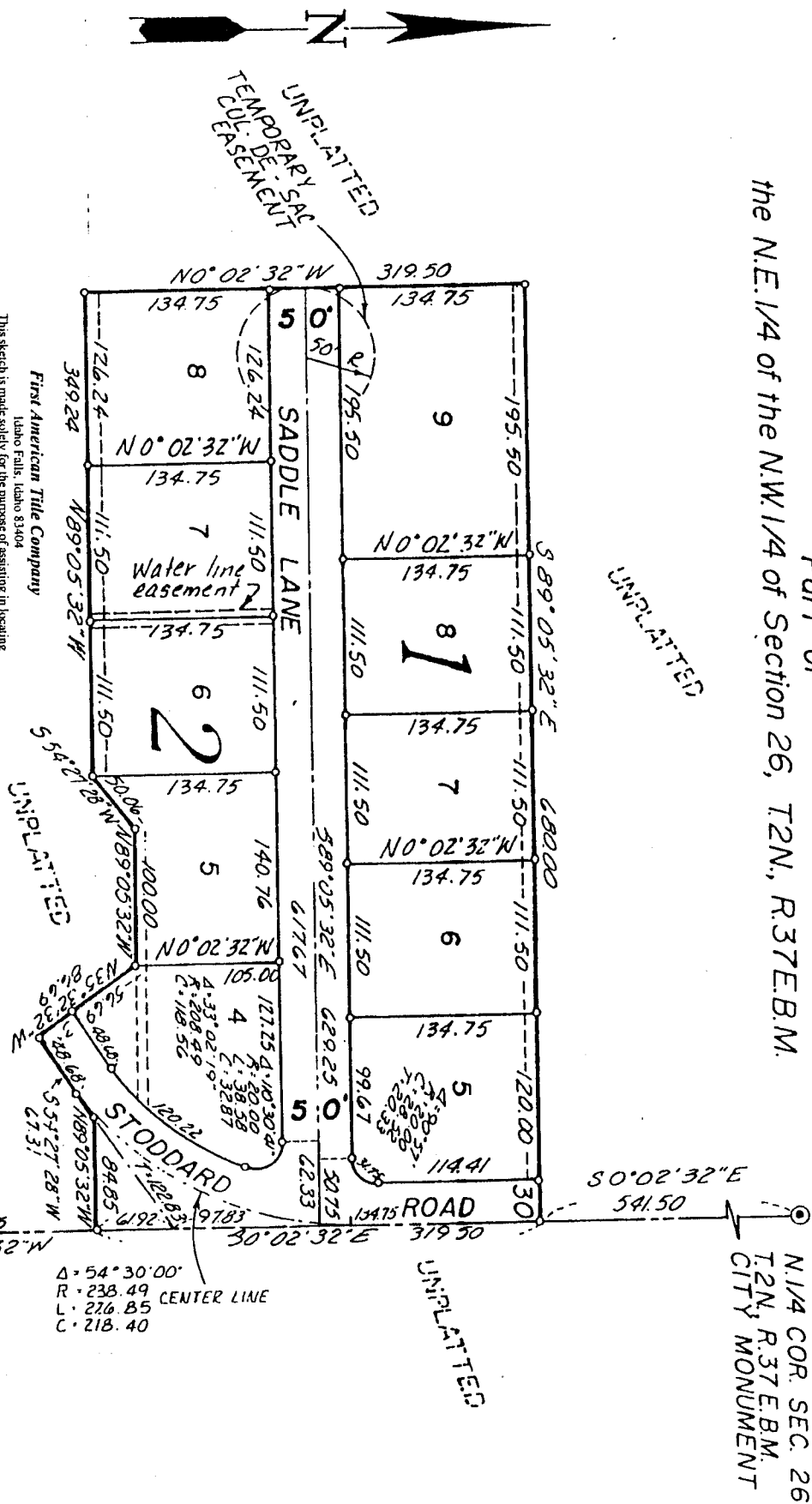


FIRST AMENDED PLAT WESTSIDE PARK

DIVISION NO. 1
BONNEVILLE COUNTY, IDAHO
Part of

the N.E. 1/4 of the N.W. 1/4 of Section 26, T2N., R.37E.B.M.



UNPLATTED
TEMPORARY SAC
COL. DE. SAC
EASEMENT

UNPLATTED

UNPLATTED

UNPLATTED



First American Title Company
Idaho Falls, Idaho 83404

This sketch is made solely for the purpose of assisting in locating the premises. The company assumes no liability for alleged loss or damage which may result from reliance on this map.

Δ = 54°30'00"
R = 238.49 CENTER LINE
L = 276.85
C = 218.40

S. 1/4 COR. SEC. 26
T. 2N., R. 37 E. B.M.
CITY MONUMENT

N. 1/4 COR. SEC. 26
T. 2N., R. 37 E. B.M.
CITY MONUMENT