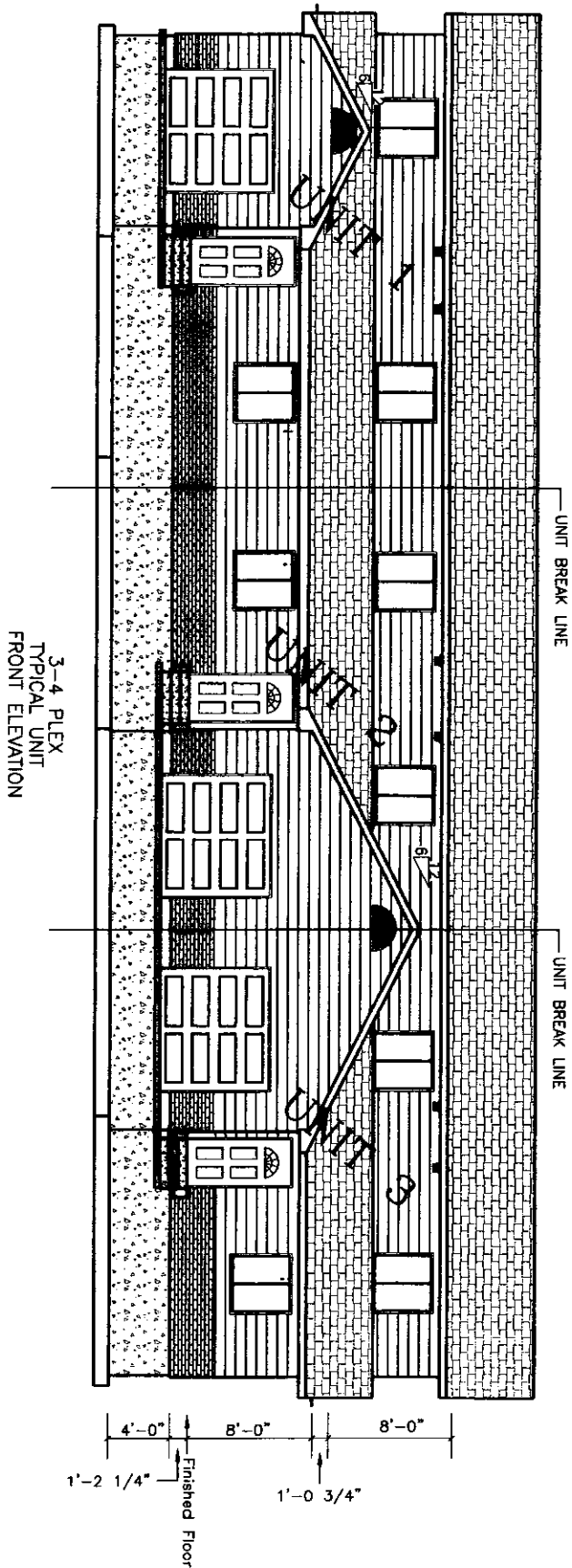


**FIRST AMENDED PLAT OF
WESTSIDE TOWNHOMES**
A CONDOMINIUM PROJECT
PURSUANT TO IDAHO CODE, TITLE 55 CHAPTER 15
ALL OF LOTS 1-9, BLOCK 1 OF
2ND AMENDED WESTRIDGE ADDITION, DIVISION NO. 1
IN THE N.W. 1/4 OF THE N.E. 1/4 OF
SECTION 22, T. 2 N., R. 37 E., B.M.



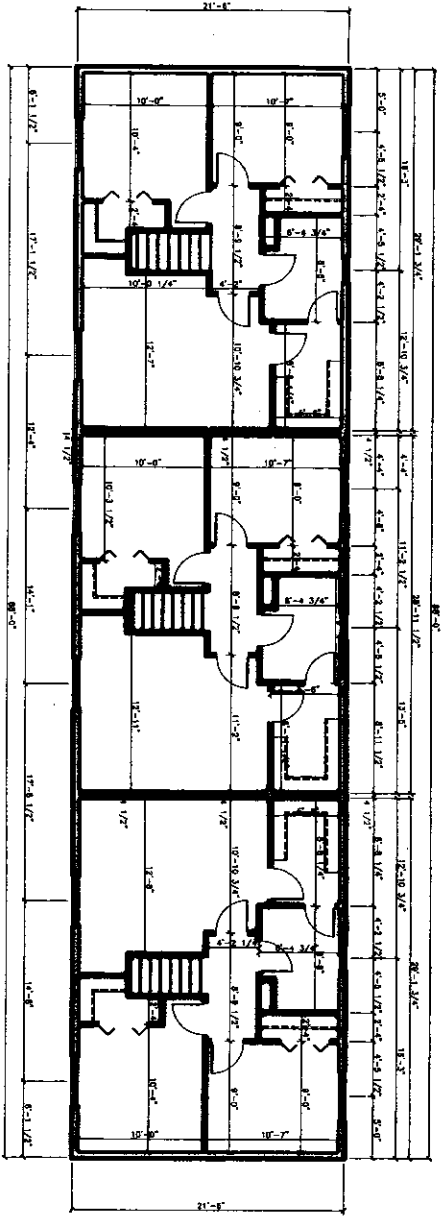
First Amended Plat to Supercede Instrument No. 1925906
Due to Building in Lots 2 - 9 Having Been Relocated

SHEET 3 OF 5



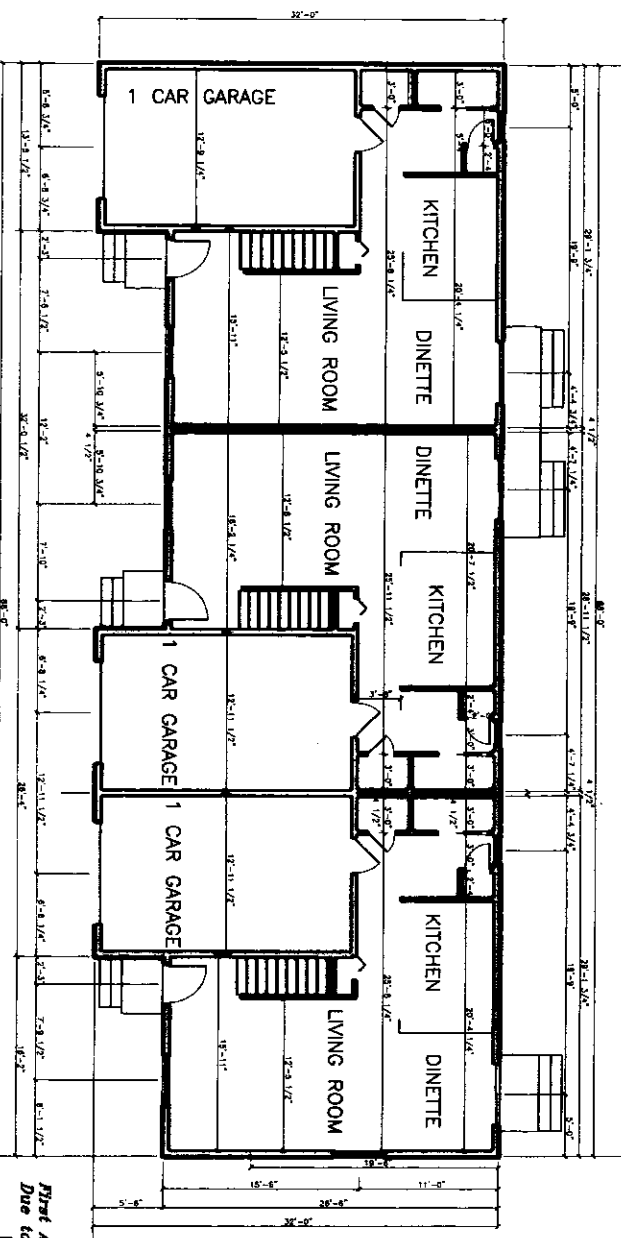
HARPER-LEAVITT ENGINEERING, INC.
PROFESSIONAL ENGINEERS AND LAND SURVEYORS
905 N. CENTRAL AVE., P.O. BOX 50091, SAND HILLS, IDAHO 83405 (208) 534-0712

**FIRST AMENDED PLAT OF
WESTSIDE TOWNHOMES**
A CONDOMINIUM PROJECT
PURSUANT TO IBAHO CODE, TITLE 55 CHAPTER 15
ALL OF LOTS 1-9, BLOCK 1 OF
2ND AMENDED WESTRIDGE ADDITION, DIVISION NO. 1
IN THE N.W. 1/4 OF THE NE 1/4 OF
SECTION 22, T. 2 N., R. 37 E., B.M.



SECOND FLOOR PLAN
NOT TO SCALE

3 PLEX
TYPICAL UNIT
FLOOR PLAN
2,569 sq. ft.

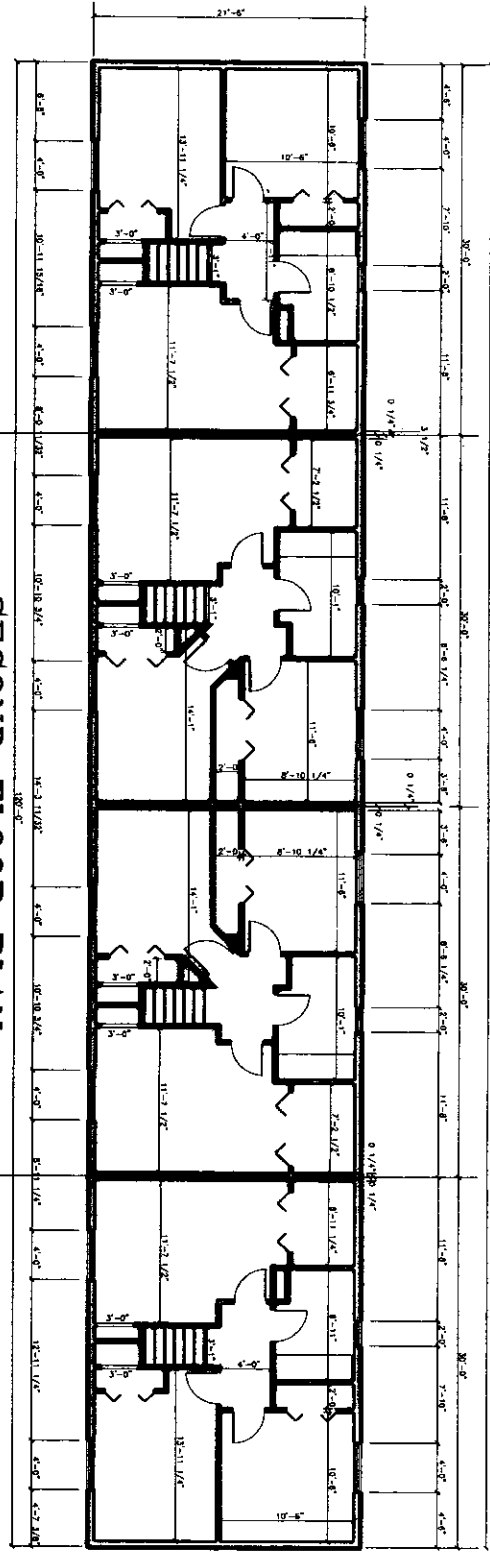


FIRST FLOOR PLAN
NOT TO SCALE

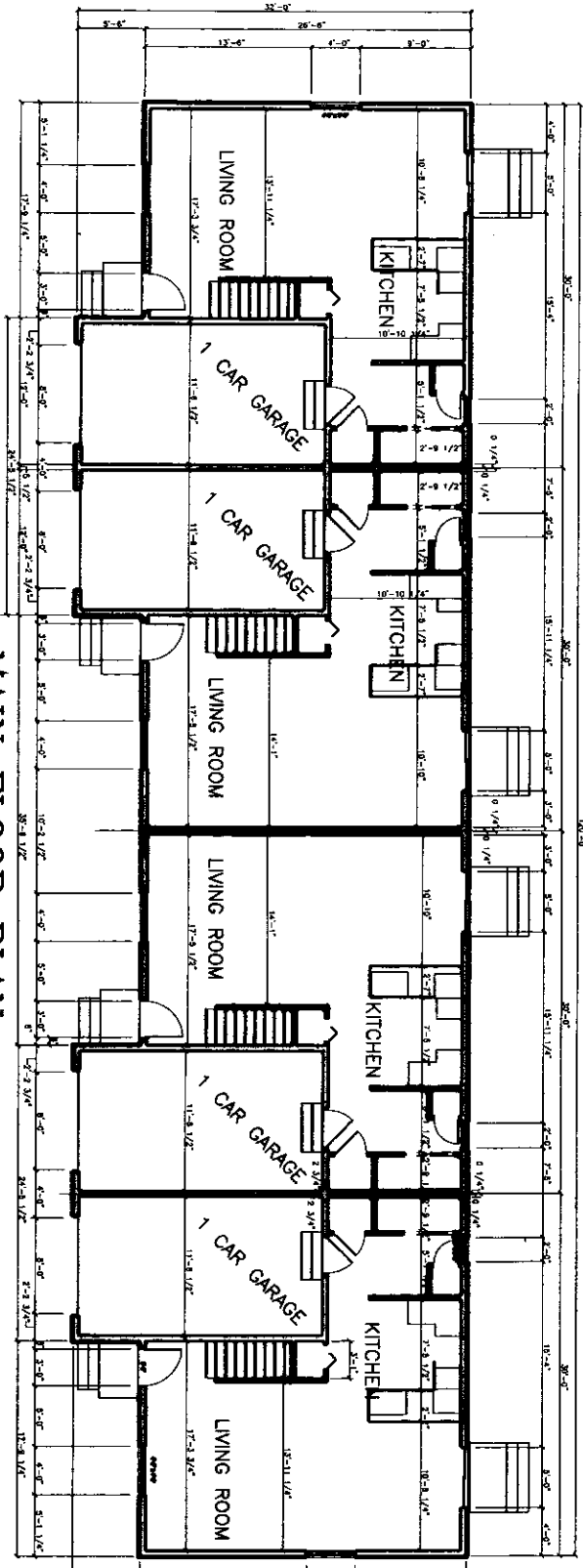
First Amended Plat to Supercede Instrument No. 1366966 SHEET 4 OF 5
Due to Buildings in Lots 2 - 8 Having Been Relocated

HE HARPER-LEAVITT ENGINEERING, INC.
PROFESSIONAL ENGINEERS AND LAND SURVEYORS
985 N. CAPITAL AVE., P.O. BOX 50981, OMAHA NE 68158 (708) 584-0812

**FIRST AMENDED PLAT OF
WESTSIDE TOWNHOMES**
A CONDOMINIUM PROJECT
PURSUANT TO IDAHO CODE TITLE 55 CHAPTER 15 ALL OF LOTS 1-9, BLOCK 1 OF 2ND AMENDED WESTRIDGE
ADDITION, DIVISION NO. 1 IN THE N.W. 1/4 OF THE N.E. 1/4 OF SECTION 22, T. 2 N., R. 37 E., B.M.



4 PLEX
TYPICAL UNIT
FLOOR PLAN
3,449 sq. ft.



SHEET 5 OF 5

First Amended Plat to Supercede Instrument No. 13259965
Due to Building In Lots 2 - 8 Having Been Relocated

AE
HARPER-LEAVITT ENGINEERING, INC.
PROFESSIONAL ENGINEERS AND LAND SURVEYORS
800 N. CENTRAL AVE., P.O. BOX 88991, SAND HILLS, SAND 83408 (208) 524-0213
P.E. 10100