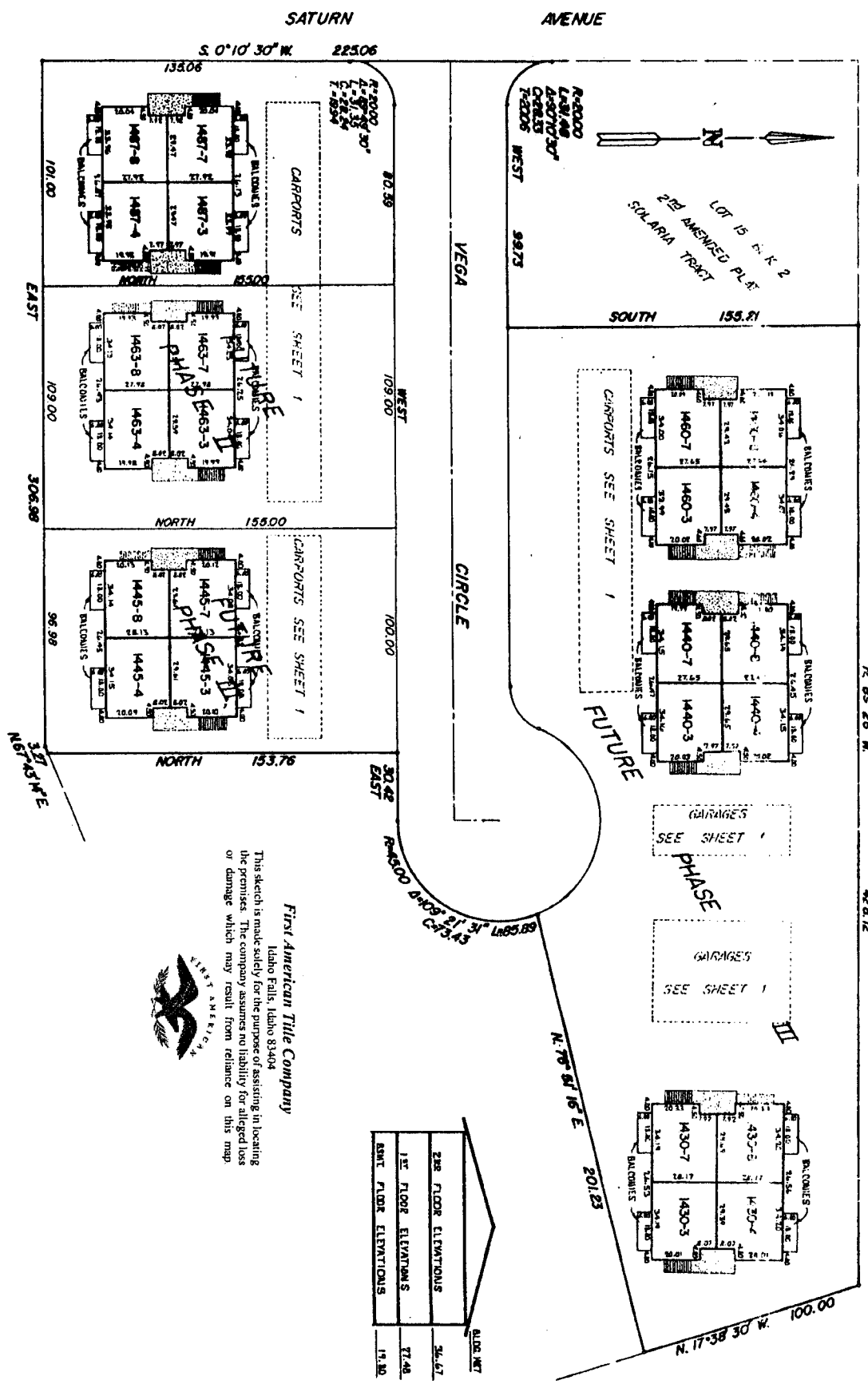


WESTWOOD PARK VILLAGES

PHASE I
A CONDOMINIUM PROJECT
CITY OF IDAHO FALLS, BONNEVILLE COUNTY, IDAHO

SECOND FLOOR PLAN



2ND FLOOR ELEVATIONS	36.67
1ST FLOOR ELEVATIONS	27.48
ASMT FLOOR ELEVATIONS	19.80



First American Tile Company
 Idaho Falls, Idaho 83404
 This sketch is made solely for the purpose of assisting in locating the premises. The company assumes no liability for alleged loss or damage which may result from reliance on this map.