

WESTWOOD PARK VILLAGES

A GOLF RESORT PROJECT

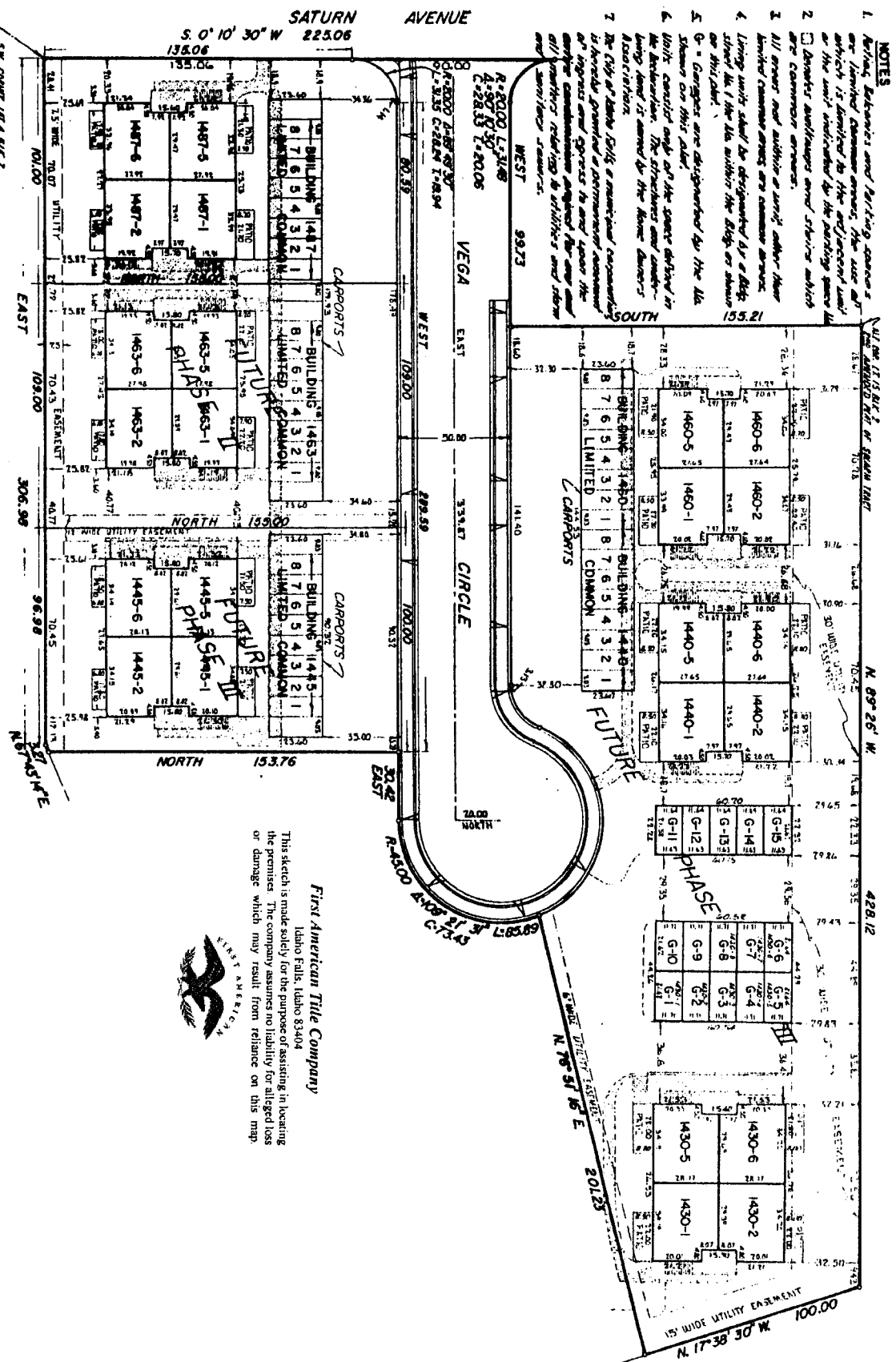
CITY OF IDAHO FALLS, BONNEVILLE COUNTY, IDAHO

FIRST FLOOR PLAN AND GROUNDS

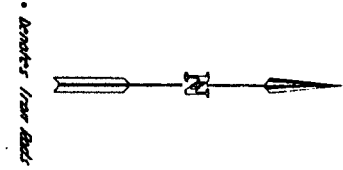
BILSWORTH ENGINEERING, INC.
IDAHO FALLS, IDAHO

PHASE I

- NOTES**
1. All easements and parking spaces are limited common areas; the use of which is limited to the adjacent unit, as the unit indicated by the parking space or the common owners.
 2. All areas not within a unit, other than limited common areas, are common areas.
 3. Living units shall be designated by a Block, Wing, Unit, or the full address: the Block, or Street, or Building.
 4. G = Garages are designated by the full address on this plan.
 5. Light consists only of the space defined in the boundaries. The structures and contents lying thereon are for the owner's use and maintenance.
 6. The City of Idaho Title & Trust Company is hereby granted a permanent easement to ingress and egress to and from the entire common area and from any and all portions relating to utilities and storm and sanitary sewers.



First American Title Company
 Idaho Falls, Idaho 83404
 This sketch is made solely for the purpose of assisting in locating the premises. The company assumes no liability for alleged loss or damage which may result from reliance on this map.



SEE COURT LOT 4 B.C. 2
FOR THE ADJACENT PART OF THE
SOUTHERN TRACT